

TRACT NO. 7972
CITY OF SAN JUAN CAPISTRANO

ETIES

WINDSONG DRIVE

ORTEGA HIGHWAY TO BROOKSIDE LANE

STARRISE LANE

WINDSONG DRIVE TO 250' EAST OF WINDSONG DR.

BROOKSIDE LANE

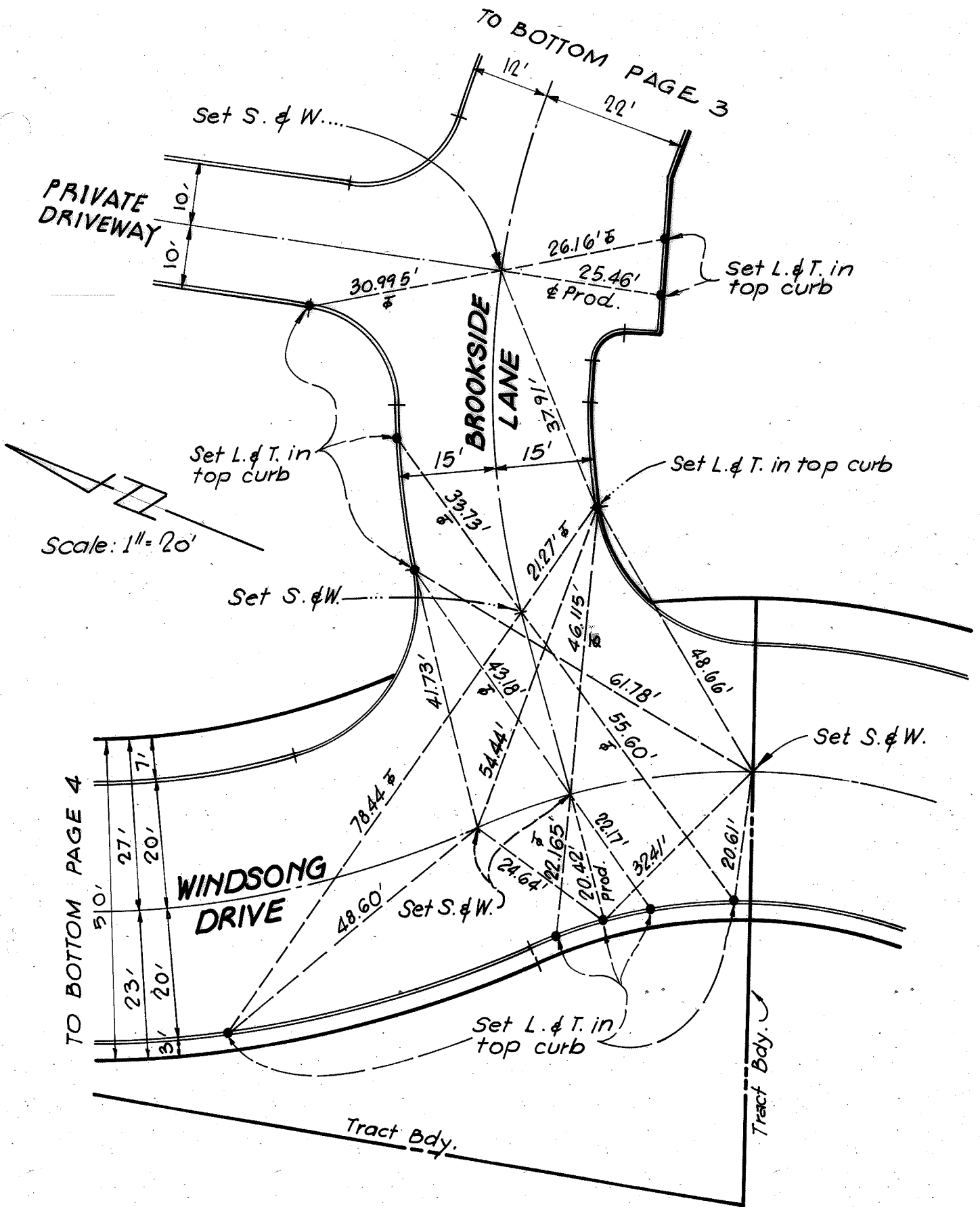
WINDSONG DRIVE TO 225' EAST OF WINDSONG DR.

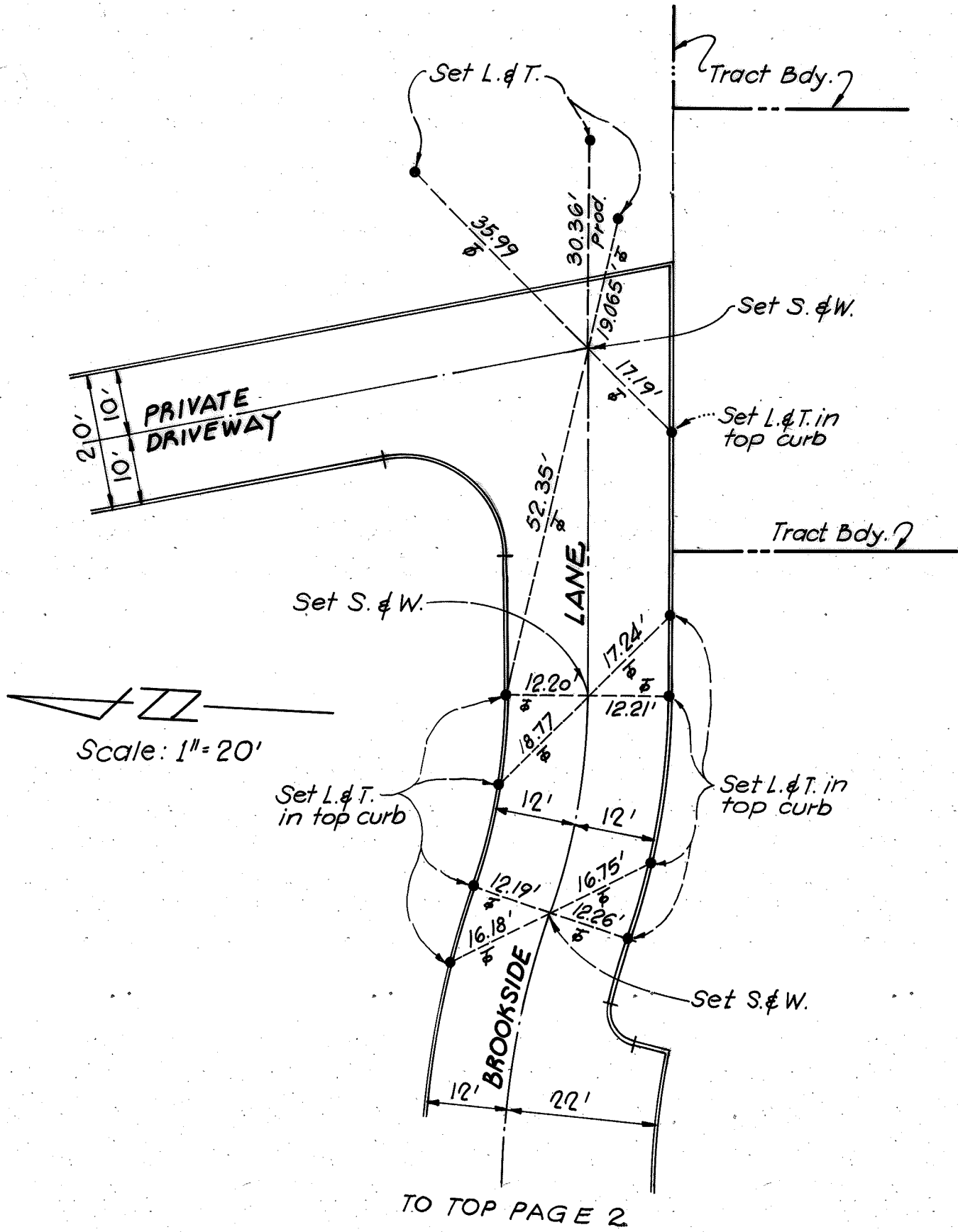
SURVEY PARTY ~

G. DUFFIN

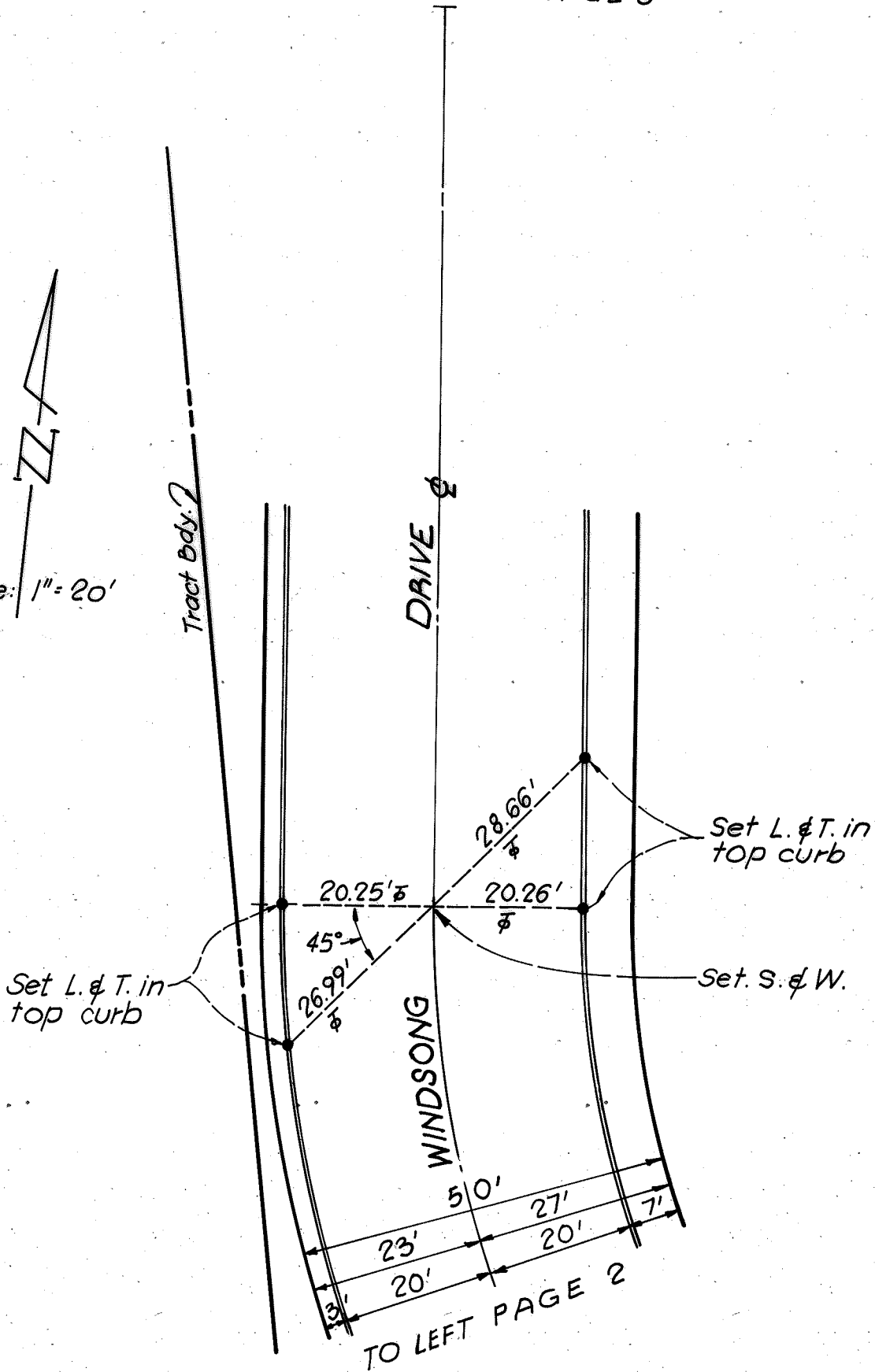
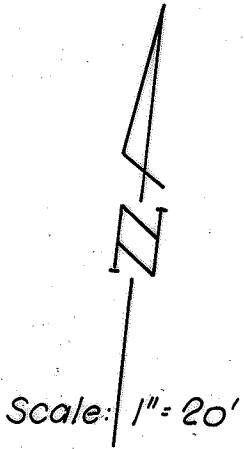
F. MUELLER

C-S-T Engineering Co.

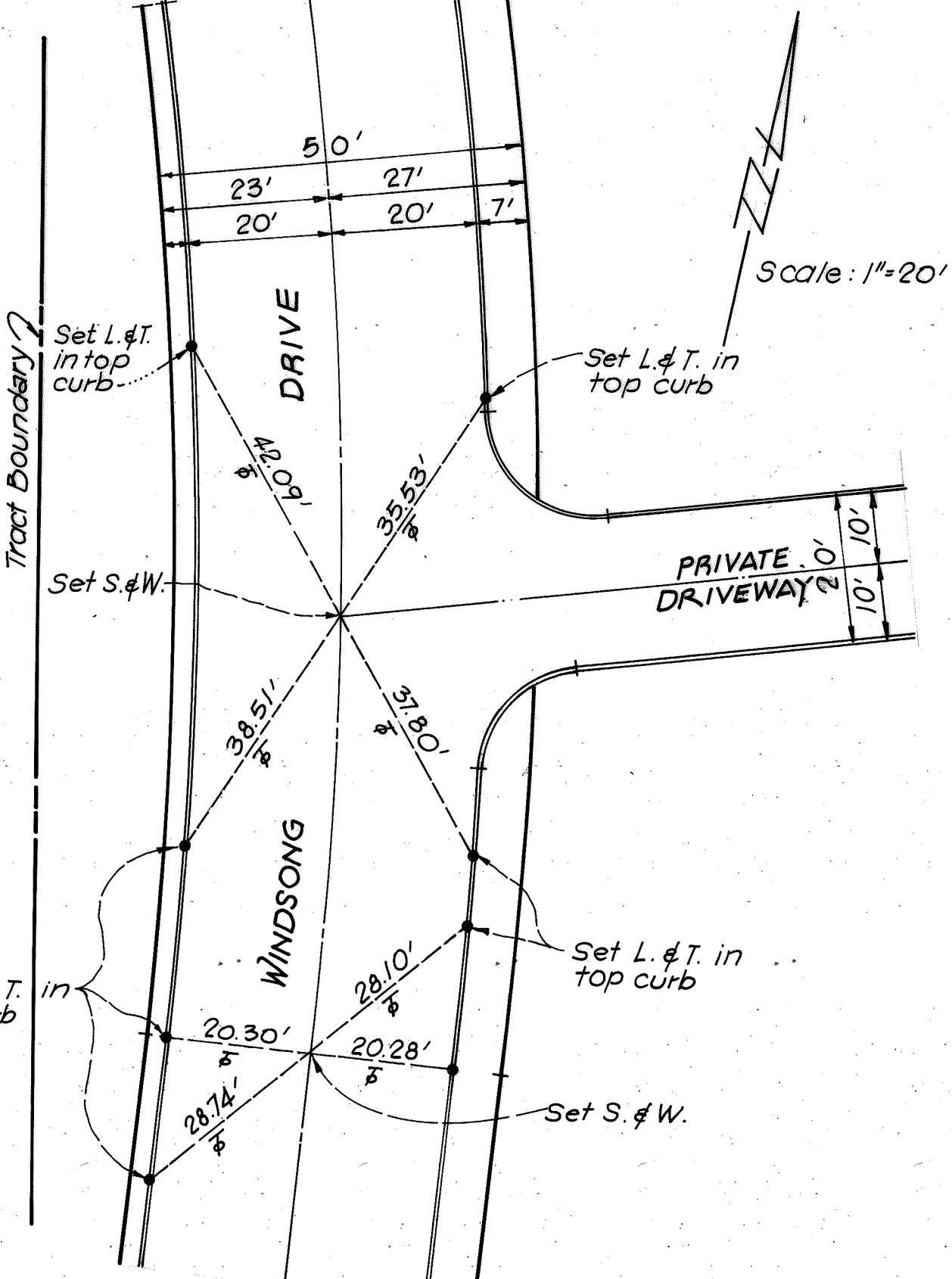




TO BOTTOM PAGE 5



TO BOTTOM PAGE 6



Scale: 1"=20'

Tract Boundary

DRIVE

WINDSONG

PRIVATE DRIVEWAYS

Set L. & T. in top curb

Set L. & T. in top curb

Set L. & T. in top curb

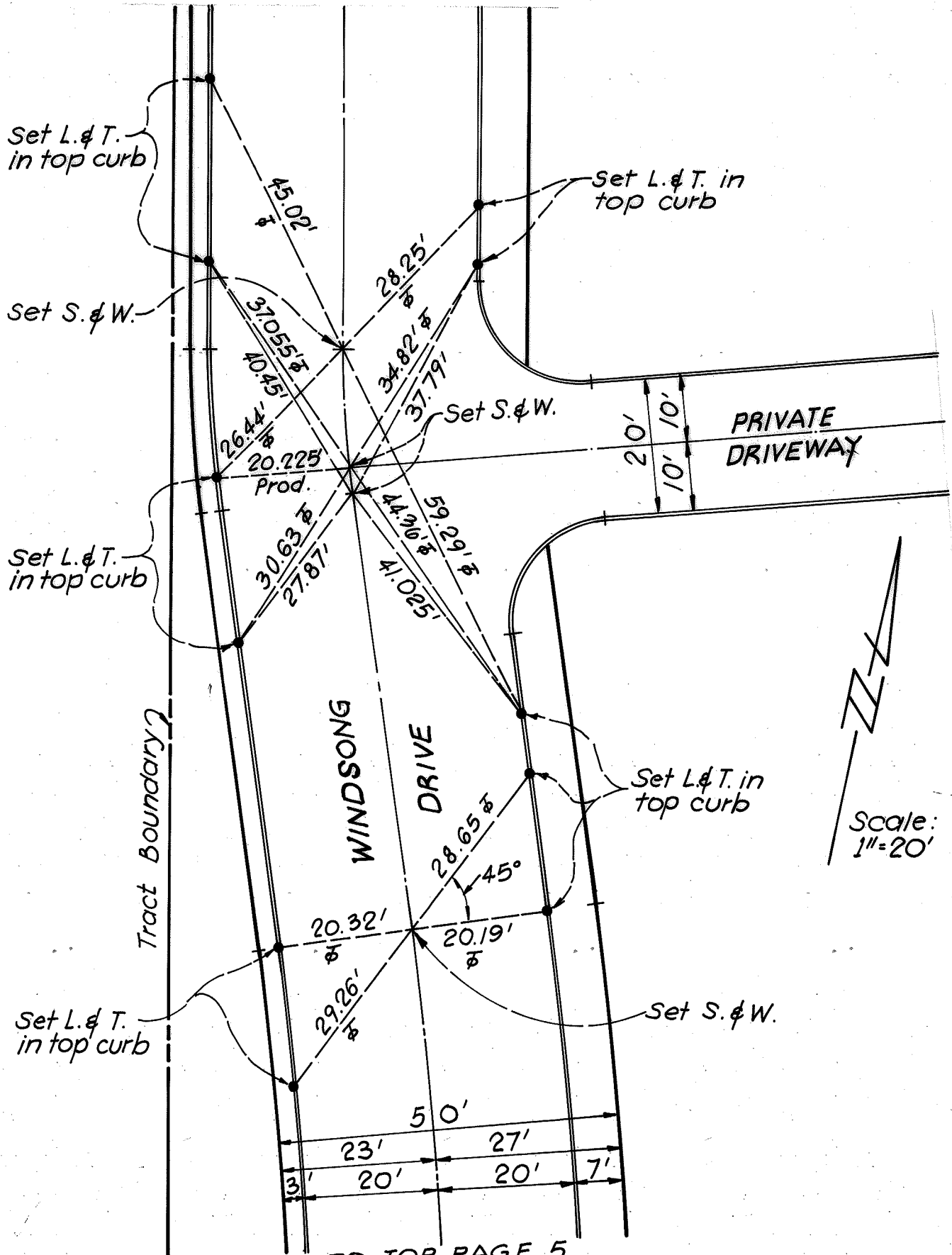
Set S. & W.

Set L. & T. in top curb

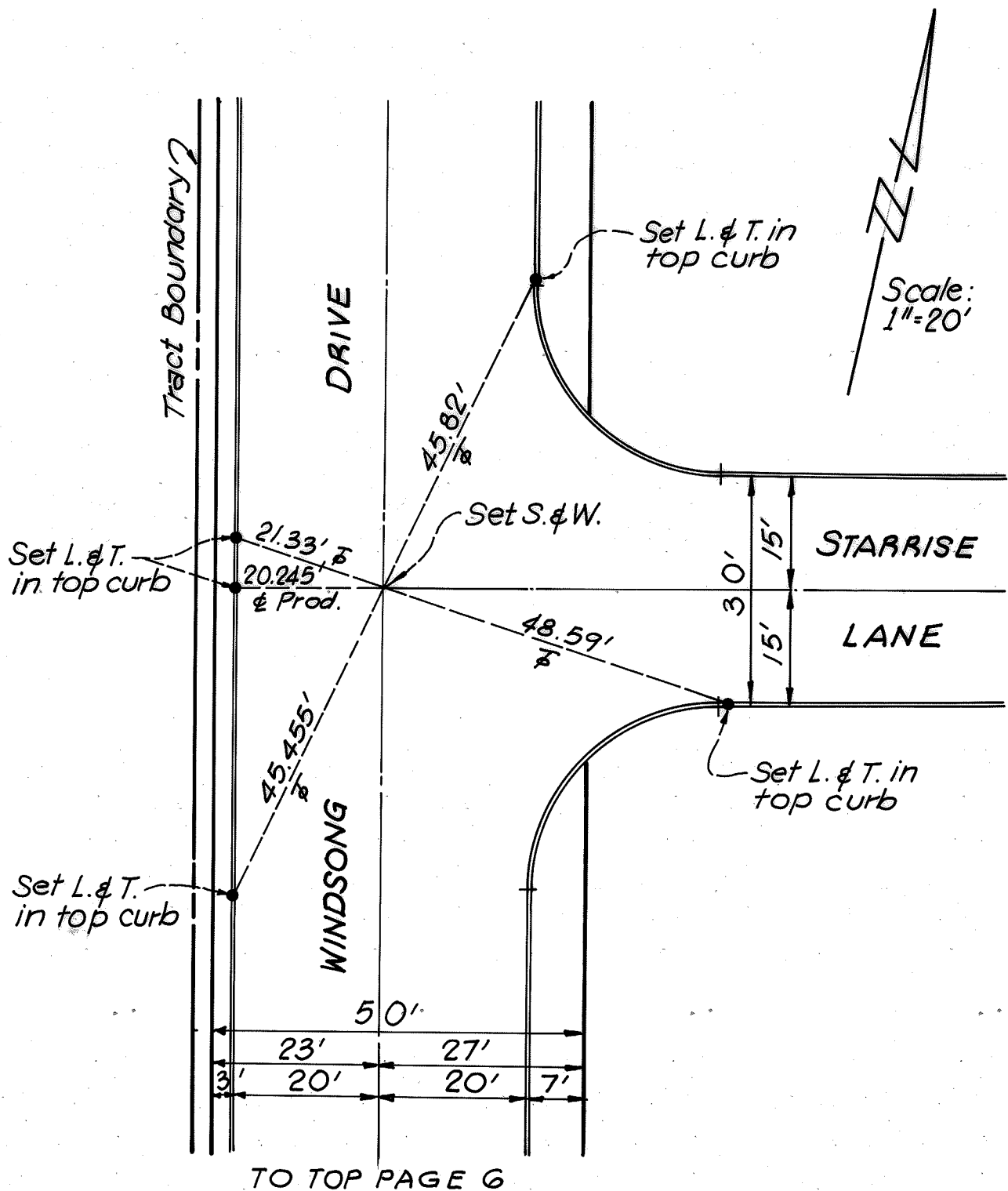
Set S. & W.

TO TOP PAGE 4

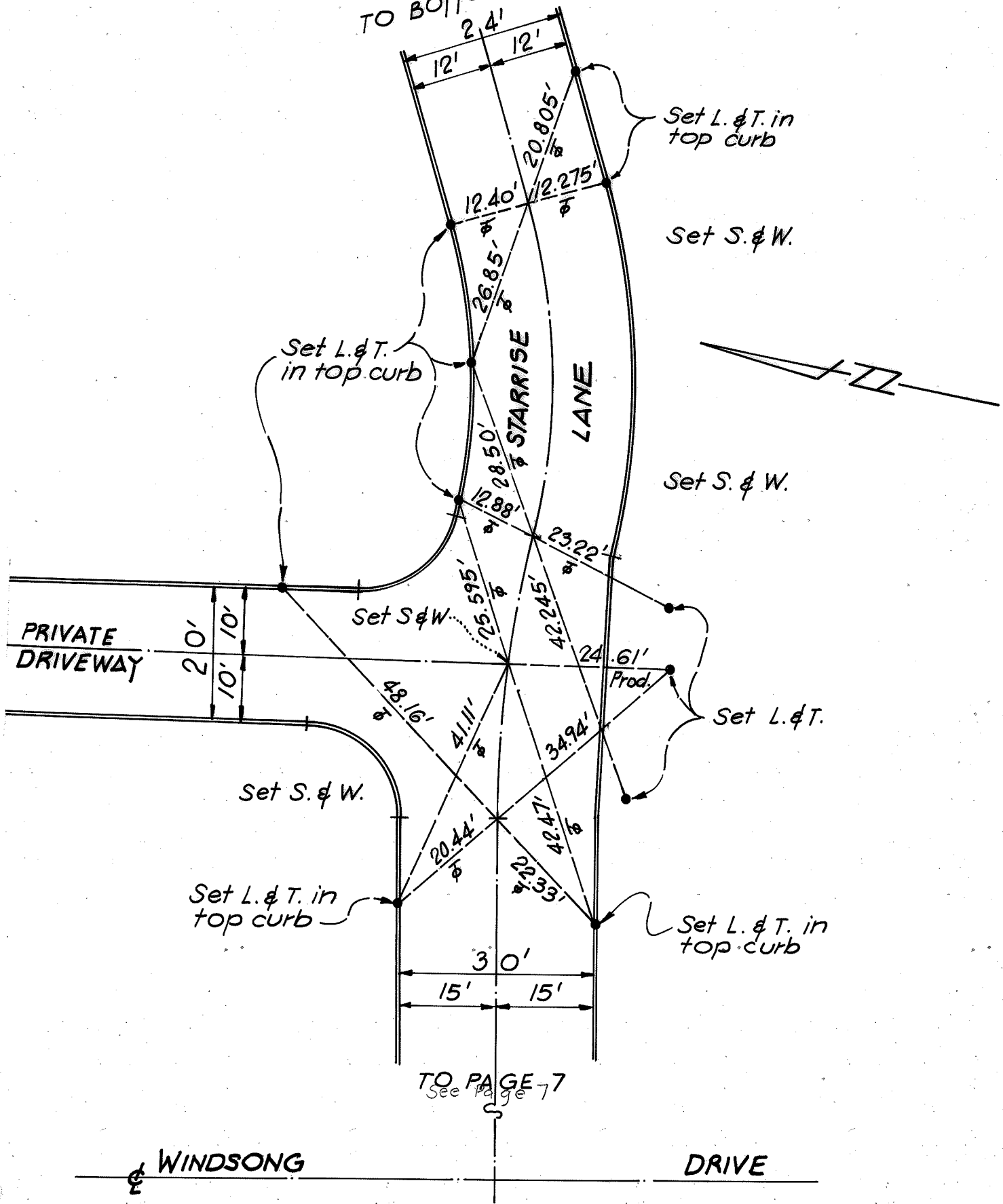
TO BOTTOM PAGE 7



TO TOP PAGE 5

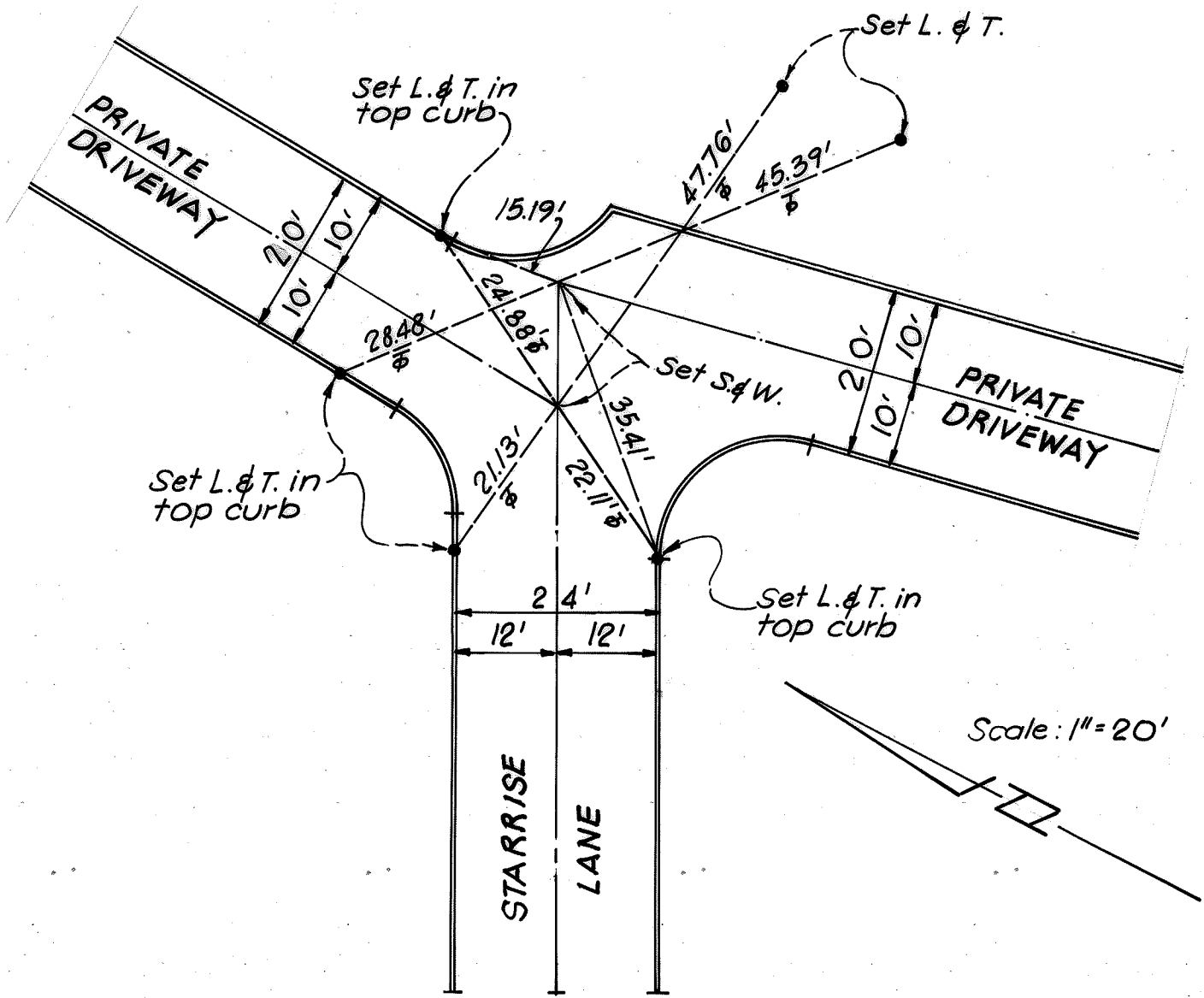


TO BOTTOM PAGE 9



TO PAGE 7
See Page 7

WINDSONG DRIVE



TO TOP PAGE 8