

TRACT NO. 7626
CITY OF SAN JUAN CAPISTRANO

Ø TIES

WINDSONG DRIVE

TRACT N^o. 7972 TO FUTURE LANOVIA AVENUE

SUNDANCE DRIVE

MORNINGSTAR LANE TO CALLE ARROYO

CALLE ARROYO

SUNDANCE DRIVE TO LANOVIA AVENUE

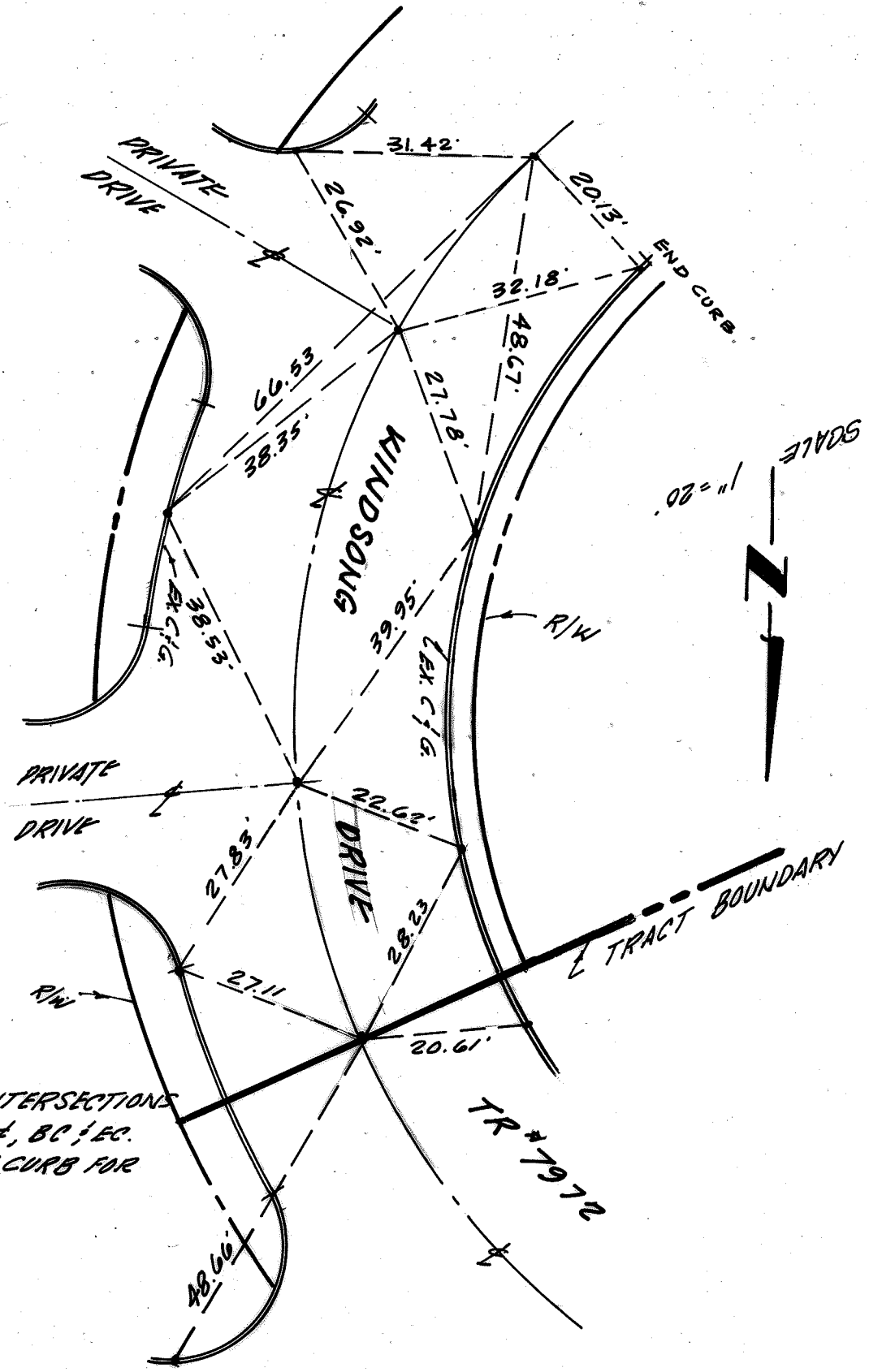
SURVEY PARTY

G. DUFFIN

F. MUELLER

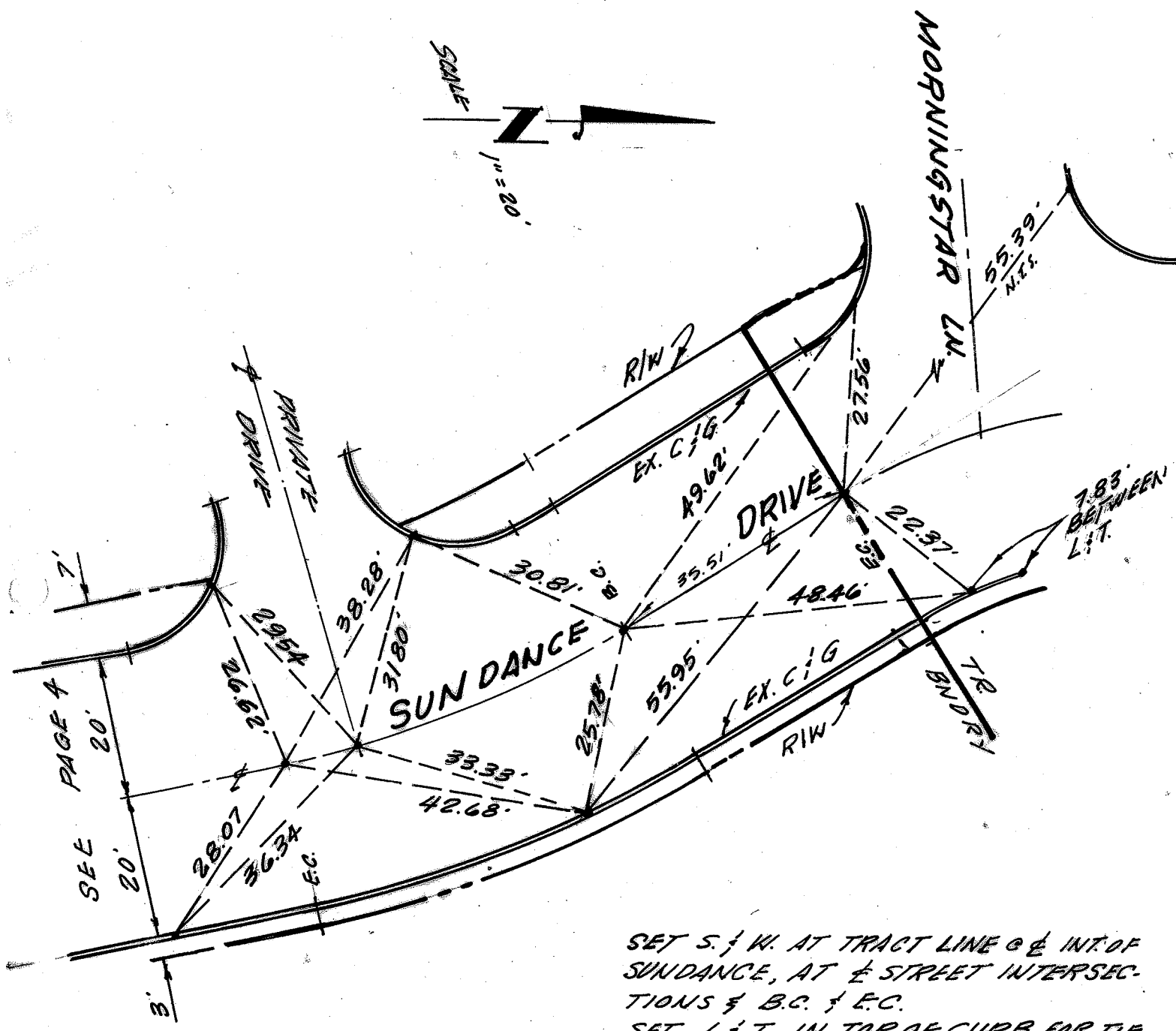
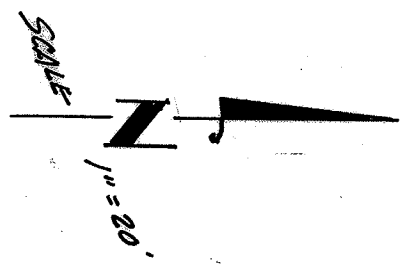
C.S.T. ENGINEERING CO.
125 E. BAKER ST.
COSTA MESA, CA. 92626

PAGE 1 OF 8

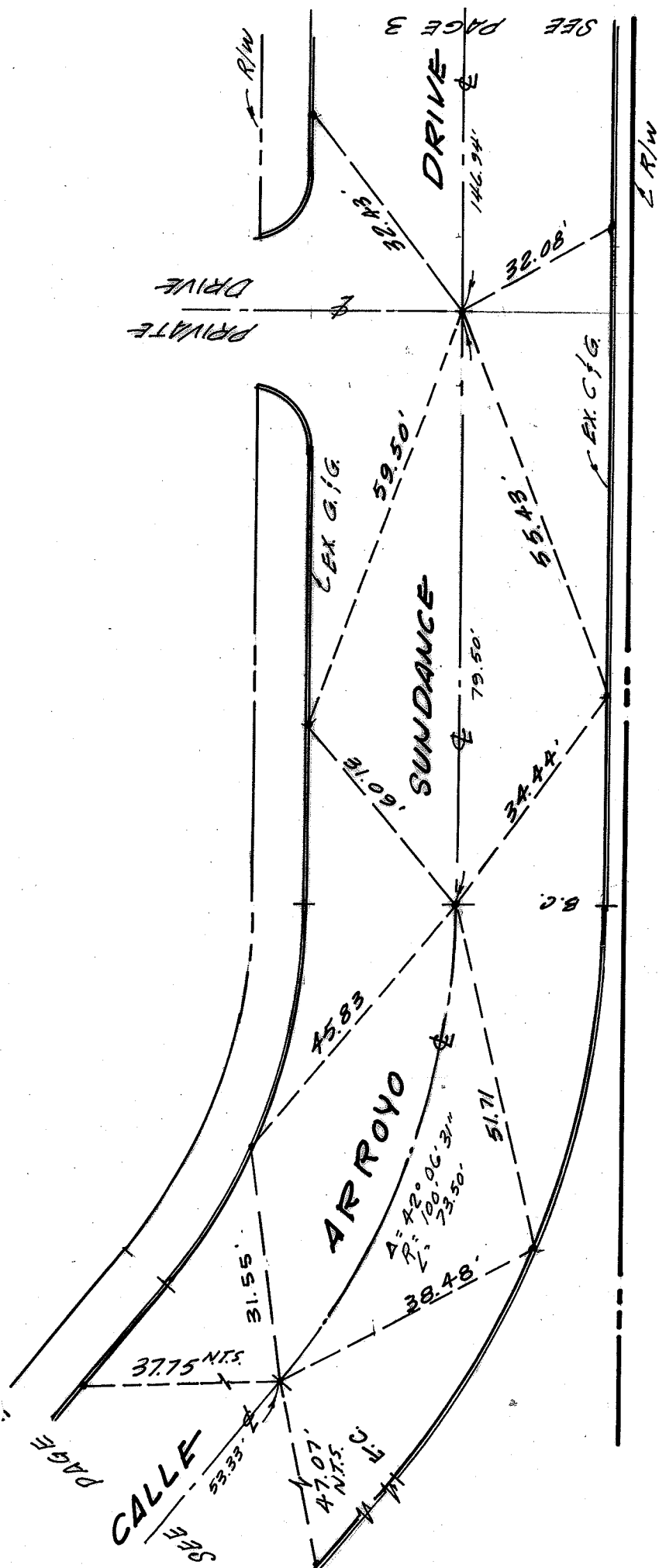


SET S; W. AT ϕ INTERSECTIONS
 AT TRACT BNDRY; ϕ , BC; EC.
 SET L; T IN TOP OF CURB FOR
 TIE POINT.

D

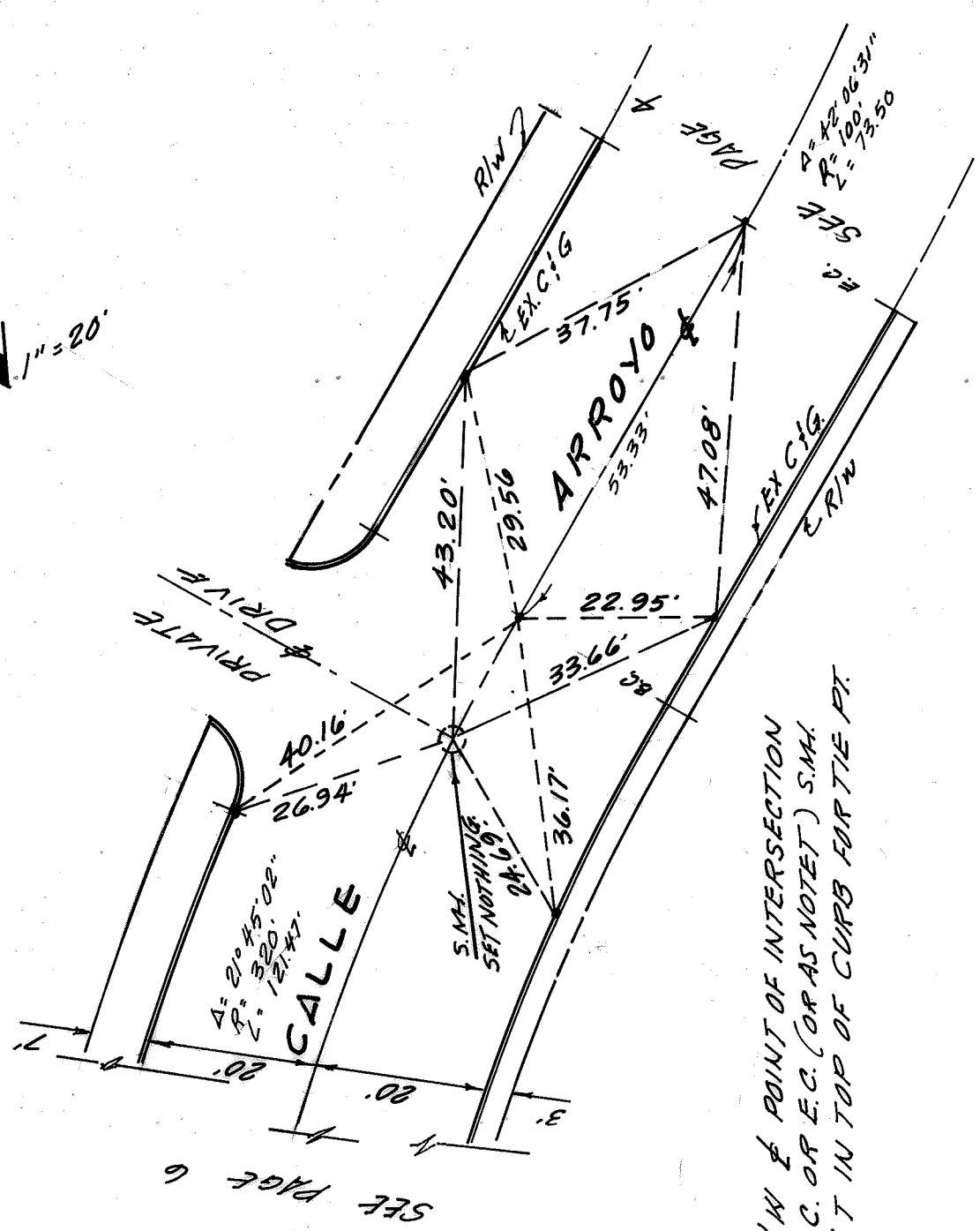


SET S; W. AT TRACT LINE @ & INT. OF
 SUNDANCE, AT & STREET INTERSEC-
 TIONS & B.C. & E.C.
 SET L; T IN TOP OF CURB FOR TIE
 POINTS.

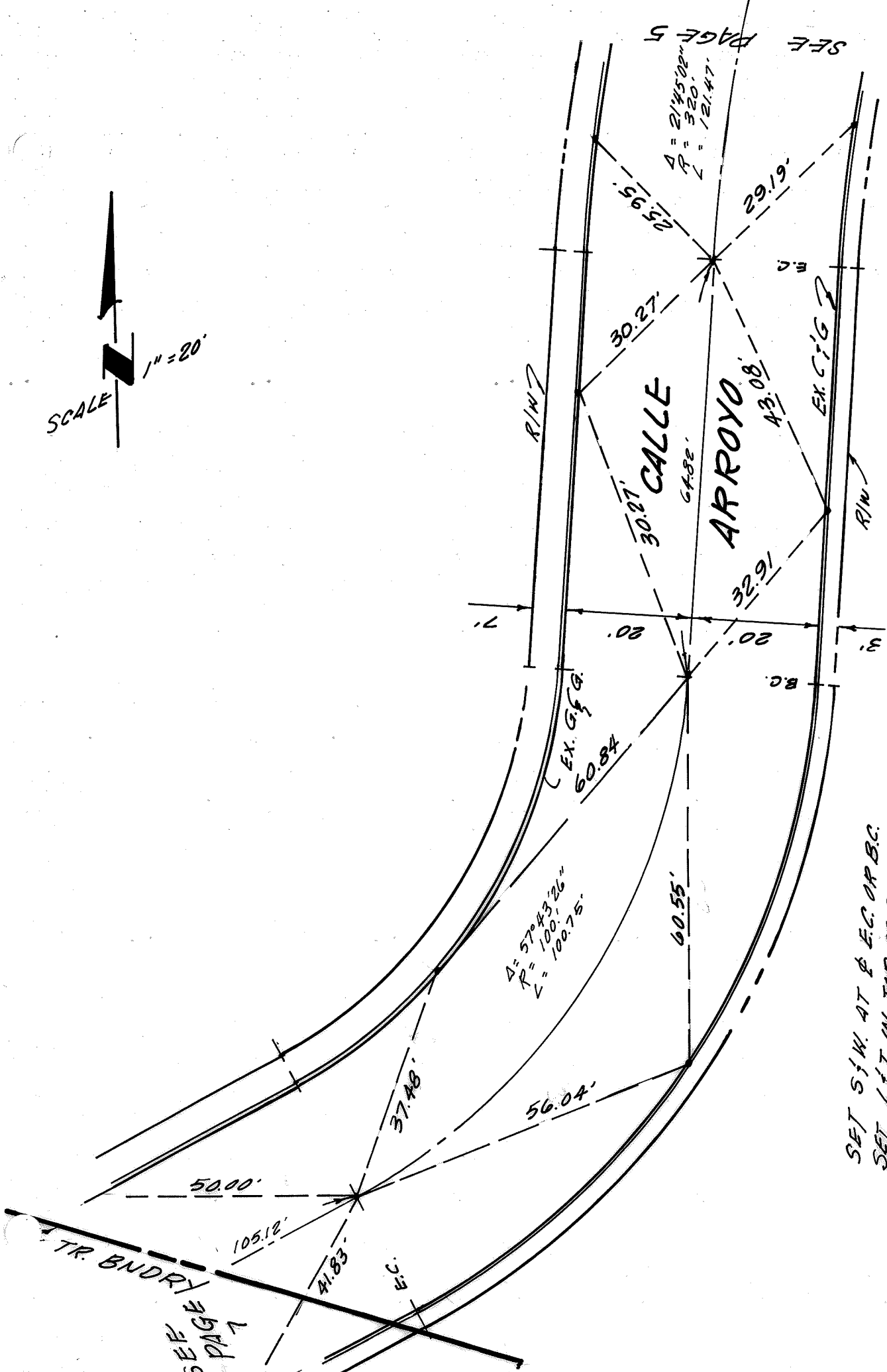
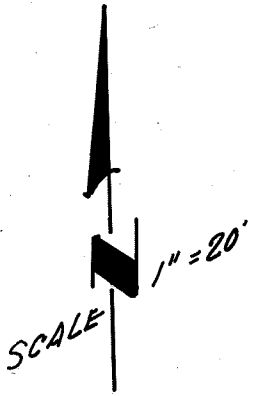


SET S. & W. INTERSECTIONS
AND AT B.C. & E.C.
SET L. & T. IN TOP OF CURB
FOR TIE PT.

SCALE 1" = 20'

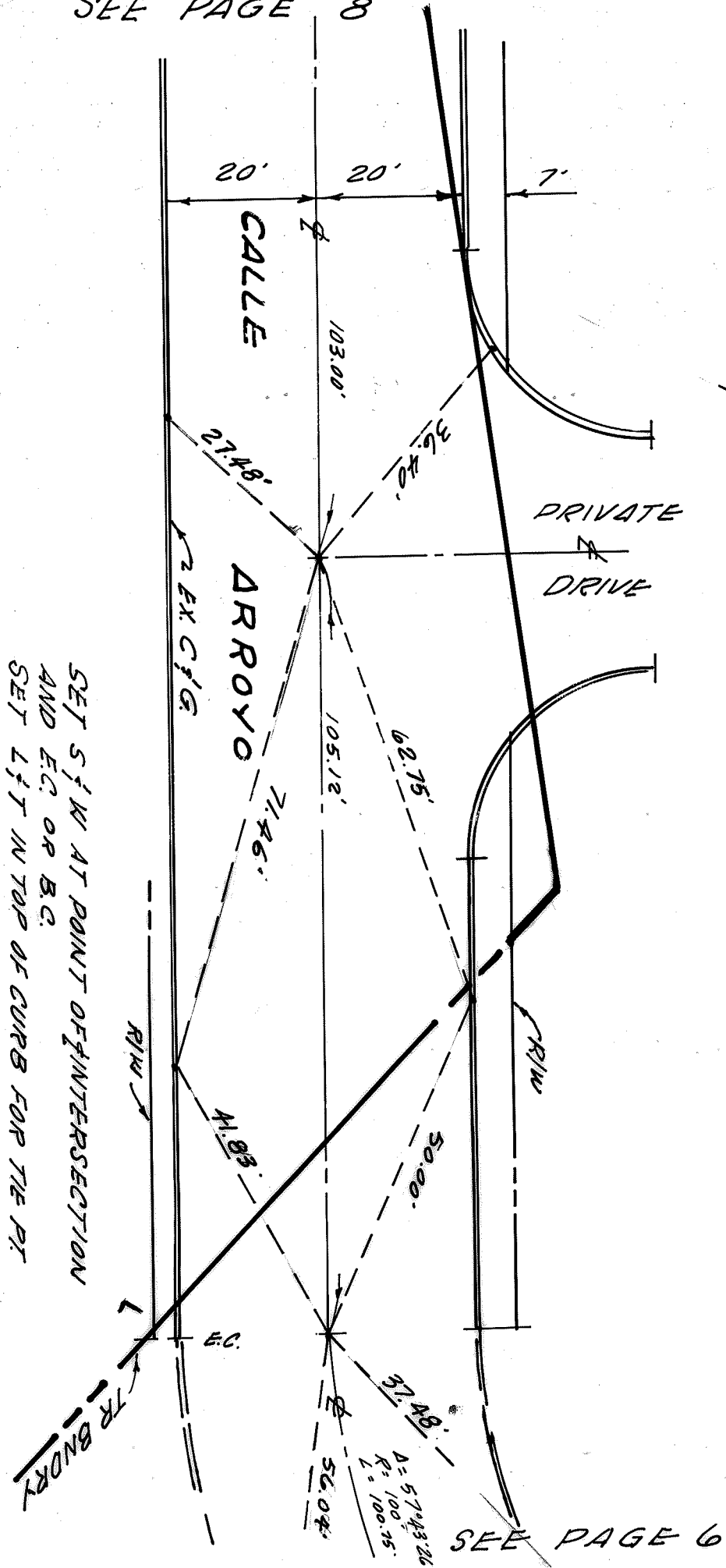


SET S.I.W & POINT OF INTERSECTION AND B.C. OR E.C. (OR AS NOTED) S.M.M. SET L.I.T IN TOP OF CURB FOR TIE PT.



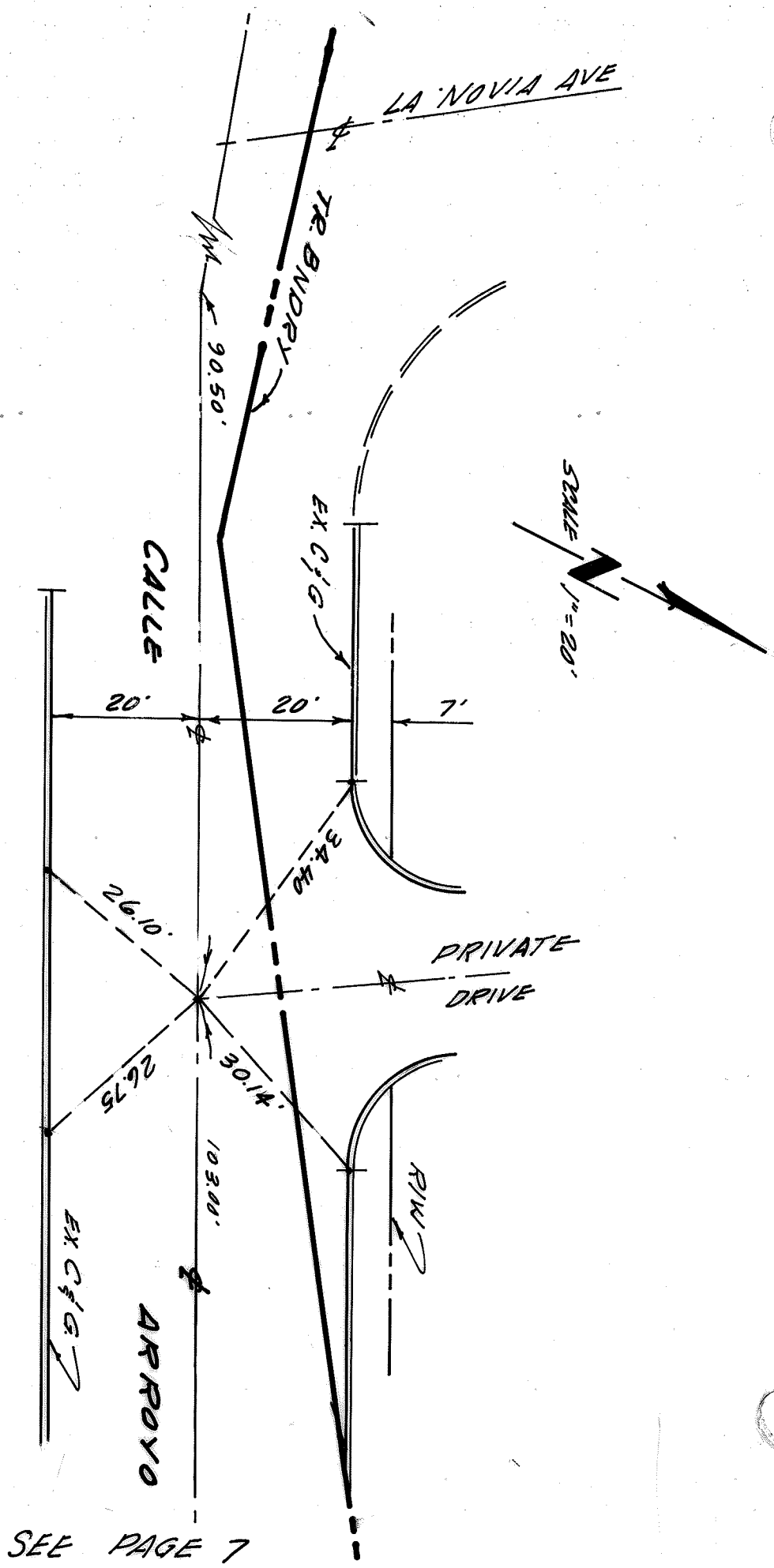
SET S.I.W. AT E.C. OR BC.
SET LIFT IN TOP OF CURB FOR THE PT.

SEE PAGE 8



SET S'f'W AT POINT OF INTERSECTION AND E.C. OR B.C. SET L'f'T IN TOP OF CURB FOR THE PT.

SEE PAGE 6



SET S. & W. POINT OF INTERSECTION
 SET L & T IN TOP OF CURB FOR THE PT

TR. NO. 7626

PAGE #8

SEE PAGE 7