

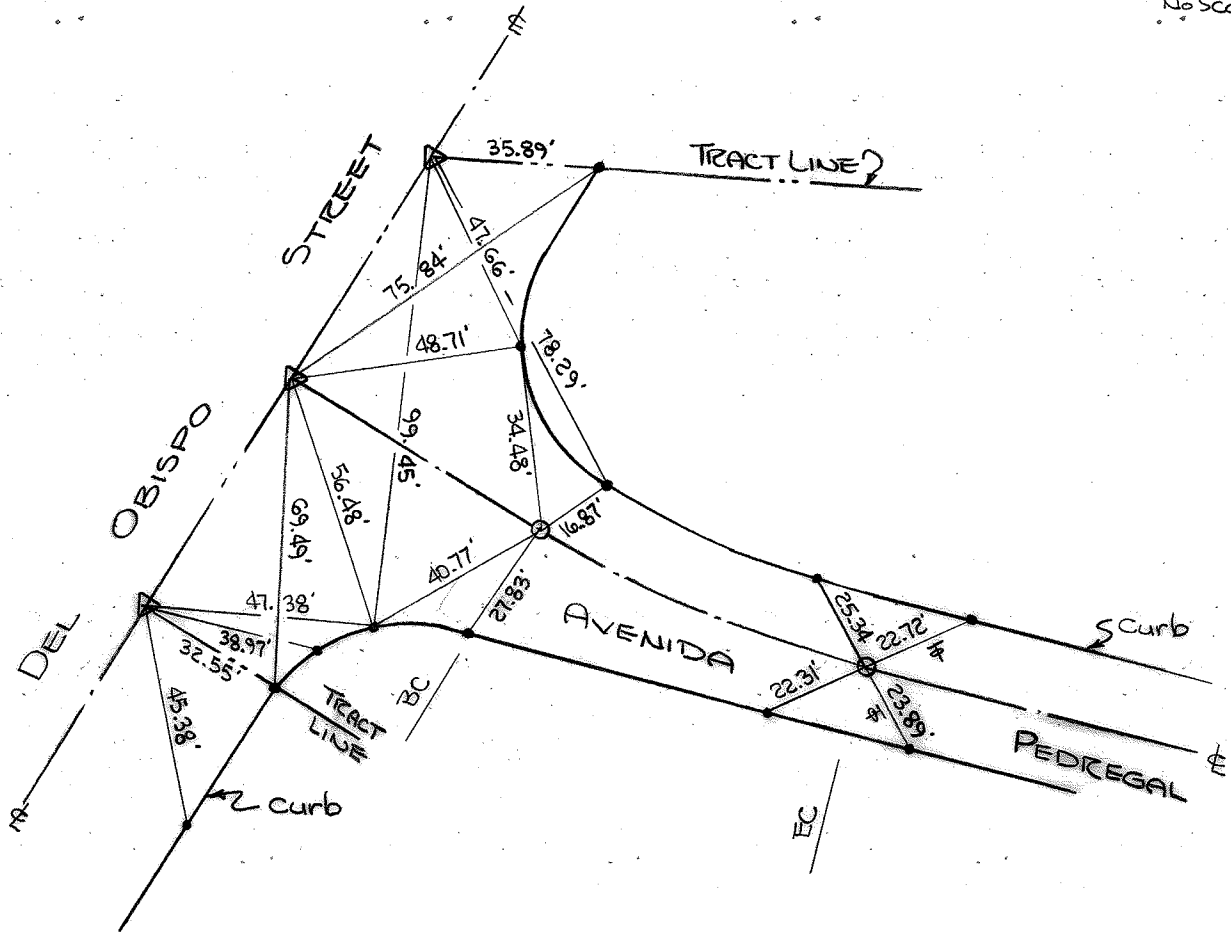
ETIES  
 TRACT NO 7561  
 SAN JUAN CAPISTRANO

Pg. 1 of 5

VTN CONSOLIDATED  
 Frank W. Richardson L.S. 2921

8-9-73

No Scale



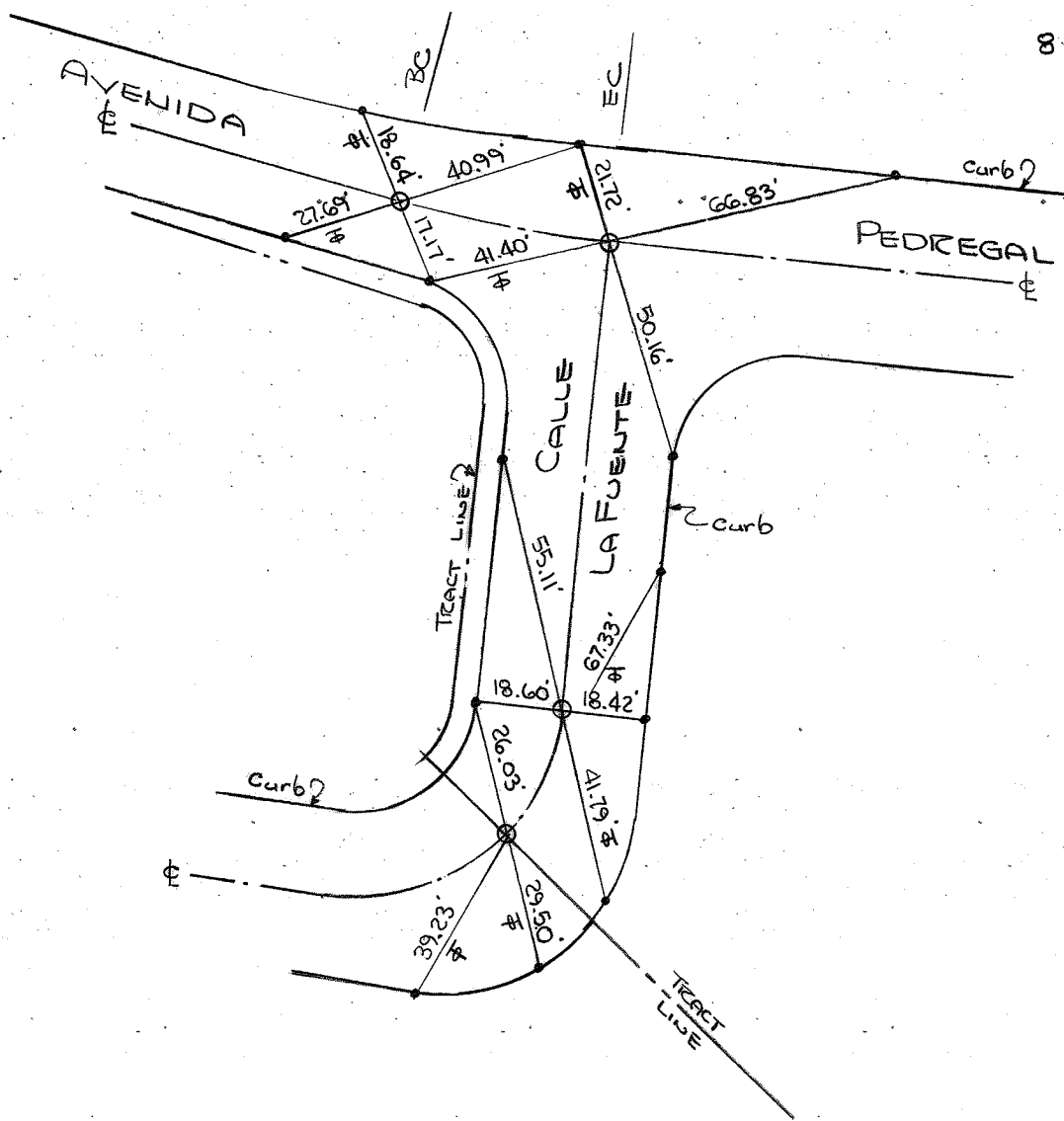
- LEGEND -

- $\Delta$  = Set Punched Railroad Spike.
- $\circ$  = Set 2" I.P. With Nail & Tag Marked "L.S. 2921" In Sub Grade, With Spike & Tin On Surface Pavement.
- $\bullet$  = Set Lead & Tack In Top Of Curb.
- $\text{—|—}$  = Tangent Over Ties.

ETIES  
TRACT No 7561  
SAN JUAN CAPISTRANO

VTN CONSOLIDATED  
Frank W. Richardson L.S. 2921

8-9-73



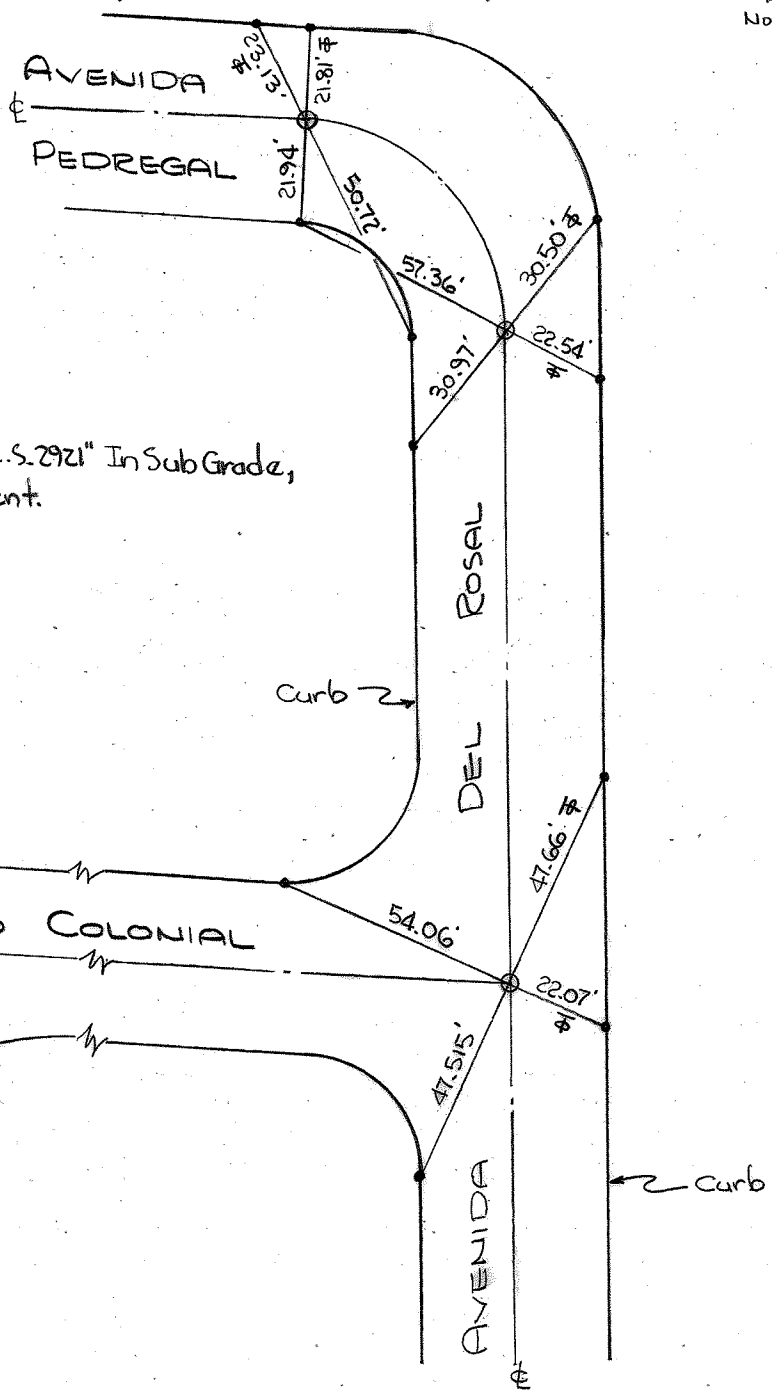
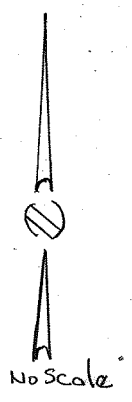
- LEGEND -

- O = Set 2" I.P. With Nail & Tag Marked "L.S. 2921" In Sub-Grade, With Spike & Tin On Surface Pavement.
- = Set Lead & Tack In Top Of Curb.
- ⊗ = Tangent Over Ties.

& TIES  
 TRACT NO 7561  
 SAN JUAN CAPISTRANO

VTN CONSOLIDATED  
 Frank W. Richardson L.S. 2921

8-9-73



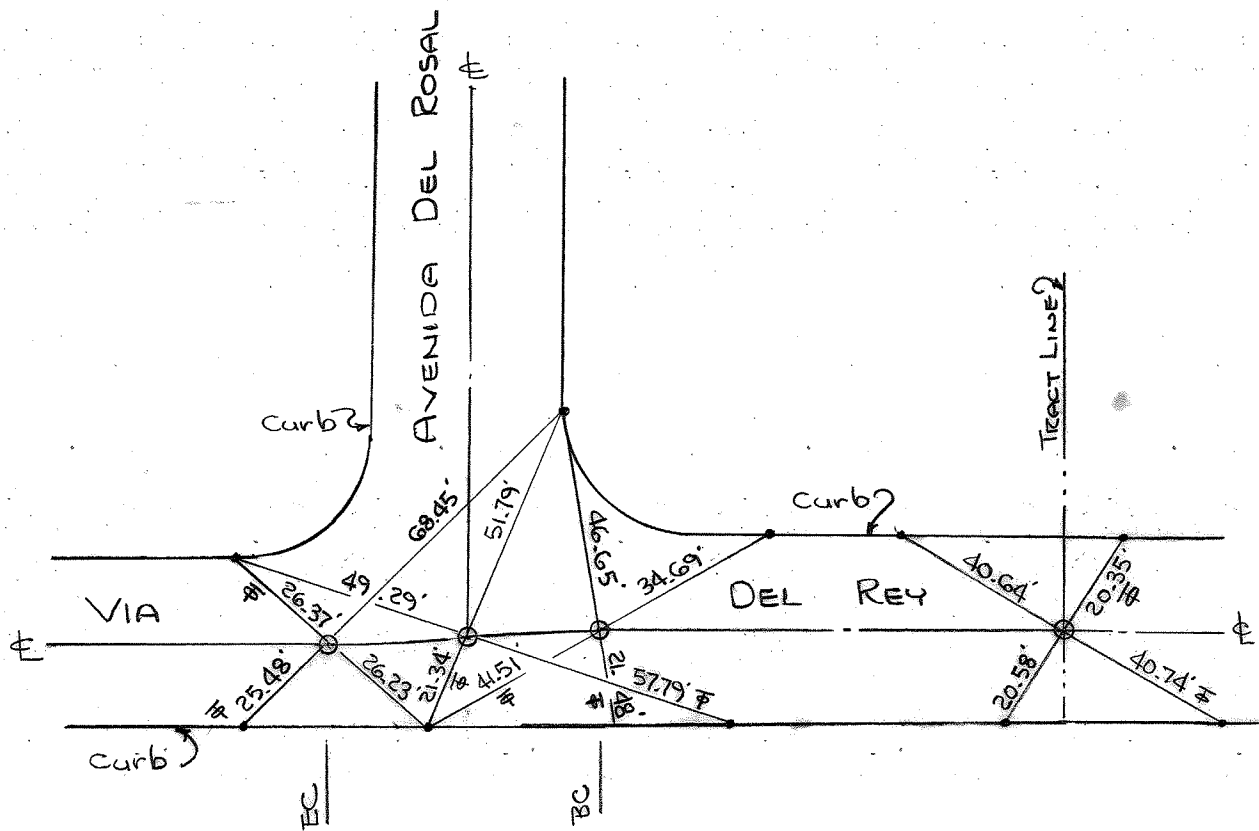
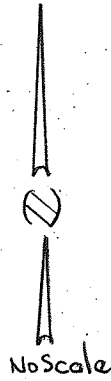
- LEGEND -

- = Set 2" I.P. With Nail & Tag Marked "L.S. 2921" In Sub Grade, With Spike & Tin On Surface Pavement.
- = Set Lead & Tack In Top Of Curb.
- ⊕ = Tangent Over Ties.

TIES  
 TRACT NO 7561  
 SAN JUAN CAPISTRANO

VTN CONSOLIDATED  
 Frank W. Richardson L.S. 2921

8-9-73



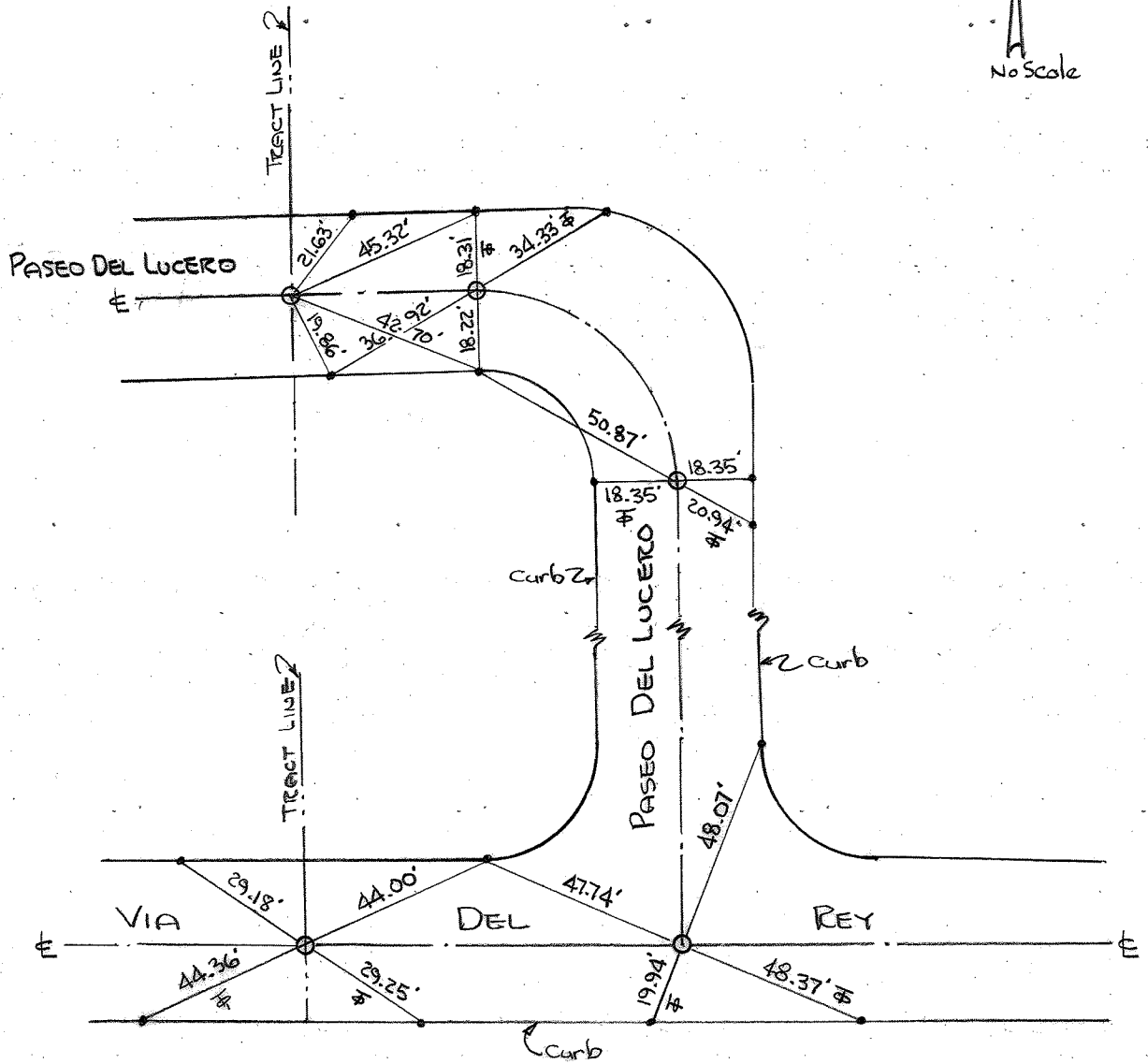
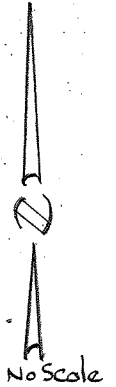
- LEGEND -

- O = Set 2" I.P. With Nail & Tag Marked "L.S. 2921" In Sub Grade,  
 With Spike & Tin On Surface Pavement.
- = Set Lead & Tack In Top Of Curb.
- ⊕ = Tangent Over Ties.

& TIES  
 TRACT NO 7561  
 SAN JUAN CAPISTRANO

VTN CONSOLIDATED  
 Frank W. Richardson L.S. 2921

8-9-73



- LEGEND -

- O = Set 2" I.P. With Nail & Tag Marked "L.S. 2921" In Sub Grade, With Spike & Tin On Surface Pavement.
- = Set Lead & Tack In Top Of Curb.
- ⊕ = Tangent Over Ties.