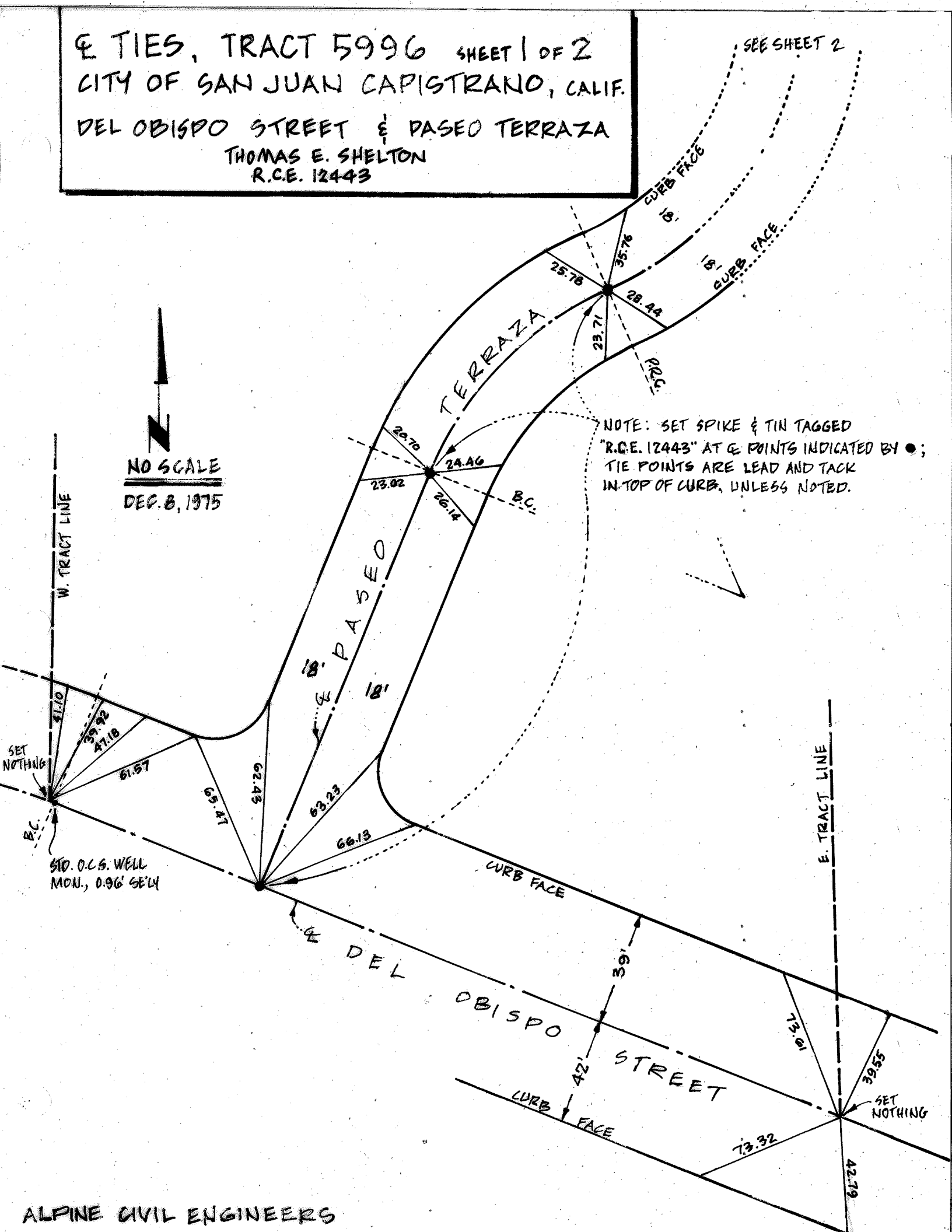


E TIES, TRACT 5996 SHEET 1 OF 2
 CITY OF SAN JUAN CAPISTRANO, CALIF.
 DEL OBISPO STREET & PASEO TERRAZA
 THOMAS E. SHELTON
 R.C.E. 12443

SEE SHEET 2

NO SCALE
 DEC. 8, 1975

NOTE: SET SPIKE & TIN TAGGED
 "R.C.E. 12443" AT & POINTS INDICATED BY ●;
 TIE POINTS ARE LEAD AND TACK
 IN TOP OF CURB, UNLESS NOTED.



Q TIES, TRACT 5996 SHEET 2 OF 2
CITY OF SAN JUAN CAPISTRANO, CALIF.

CONTINUATION OF PASEO TERRAZA TO N. TRACT LINE

THOMAS E. SHELTON
R.C.E. 12443

NOTE: SET SPIKE & TIN
TAGGED "R.C.E. 12443"
AT Q POINTS.

NOTE: TIE POINTS ARE
LEAD AND TACK IN TOP OF
CURB, UNLESS NOTED.

NOTE: ○ INDICATES THAT Q
POINT FALLS ON M.H.; SET 4 N.&T.
2' CROSS TIES; ALSO SET 4 PUNCH
MARK CROSS TIES ON M.H. RIM.

