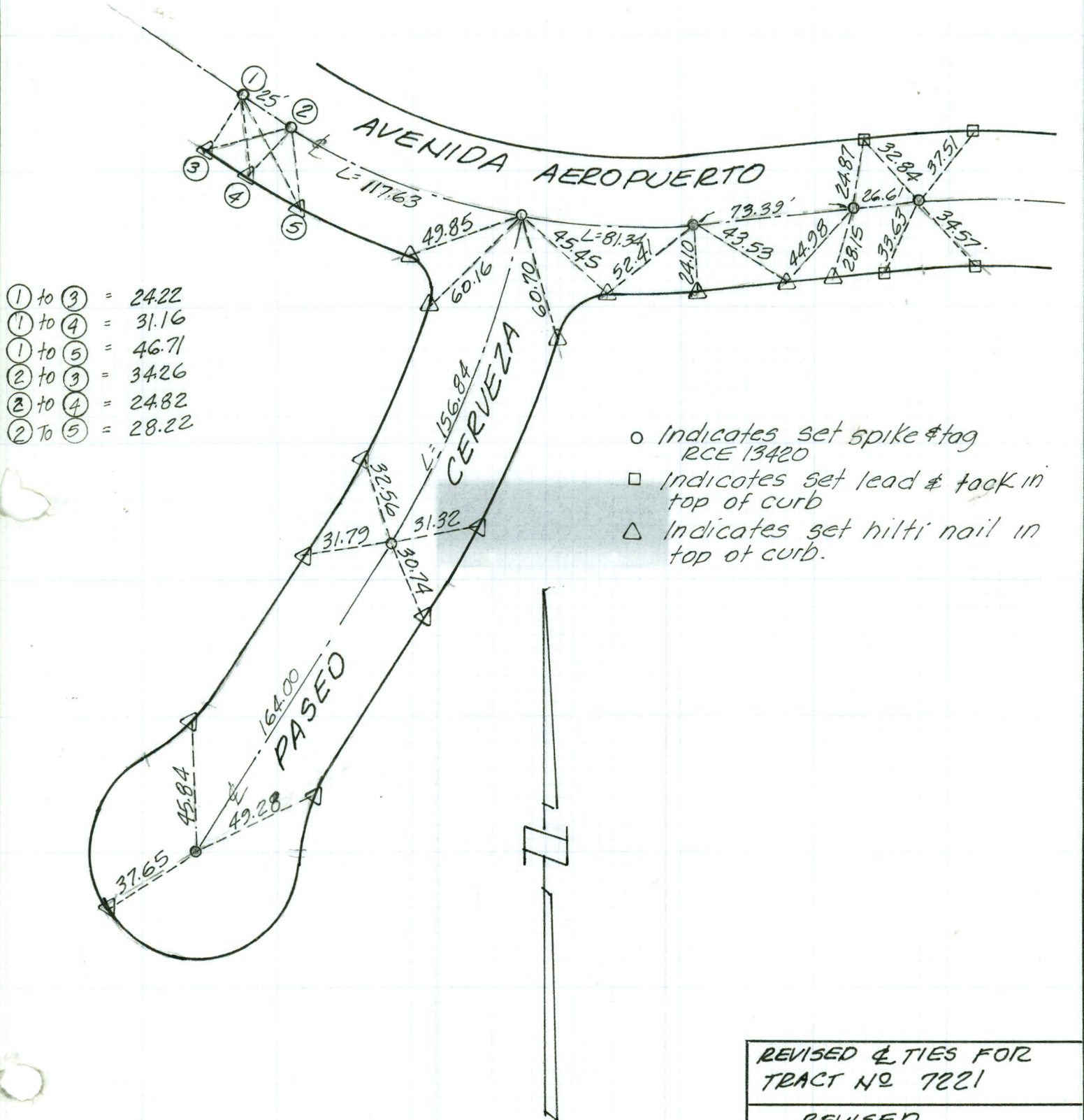




SALKIN ENGINEERING CORPORATION

1215 E. CHAPMAN AVENUE
 ORANGE, CALIFORNIA 92666
 (714) 633-7261

REVISED & TIES FOR
 TRACT NO 7221



- ① to ③ = 24.22
- ① to ④ = 31.16
- ① to ⑤ = 46.71
- ② to ③ = 34.26
- ② to ④ = 24.82
- ② to ⑤ = 28.22

- Indicates set spike & tag
RCE 13420
- Indicates set lead & tack in
top of curb
- △ Indicates set hilti nail in
top of curb.

REVISED & TIES FOR
 TRACT NO 7221

REVISED
 DATE FEB 2 19 76

PRINTED ON CLEARPRINT 1386