



R. M. Galloway & Associates Inc.

CIVIL ENGINEERS & SURVEYORS
LAND AND MINERAL SURVEYORS/LANDSCAPE ARCHITECTS

NEWPORT BEACH/COSTA MESA • SAN FRANCISCO • LOS ANGELES • SAN DIEGO • ALTURAS, CALIF. • PRESCOTT, ARIZONA

GALBAR BUILDING
129 CABRILLO, COSTA MESA, CALIF.
(714) 642-9840

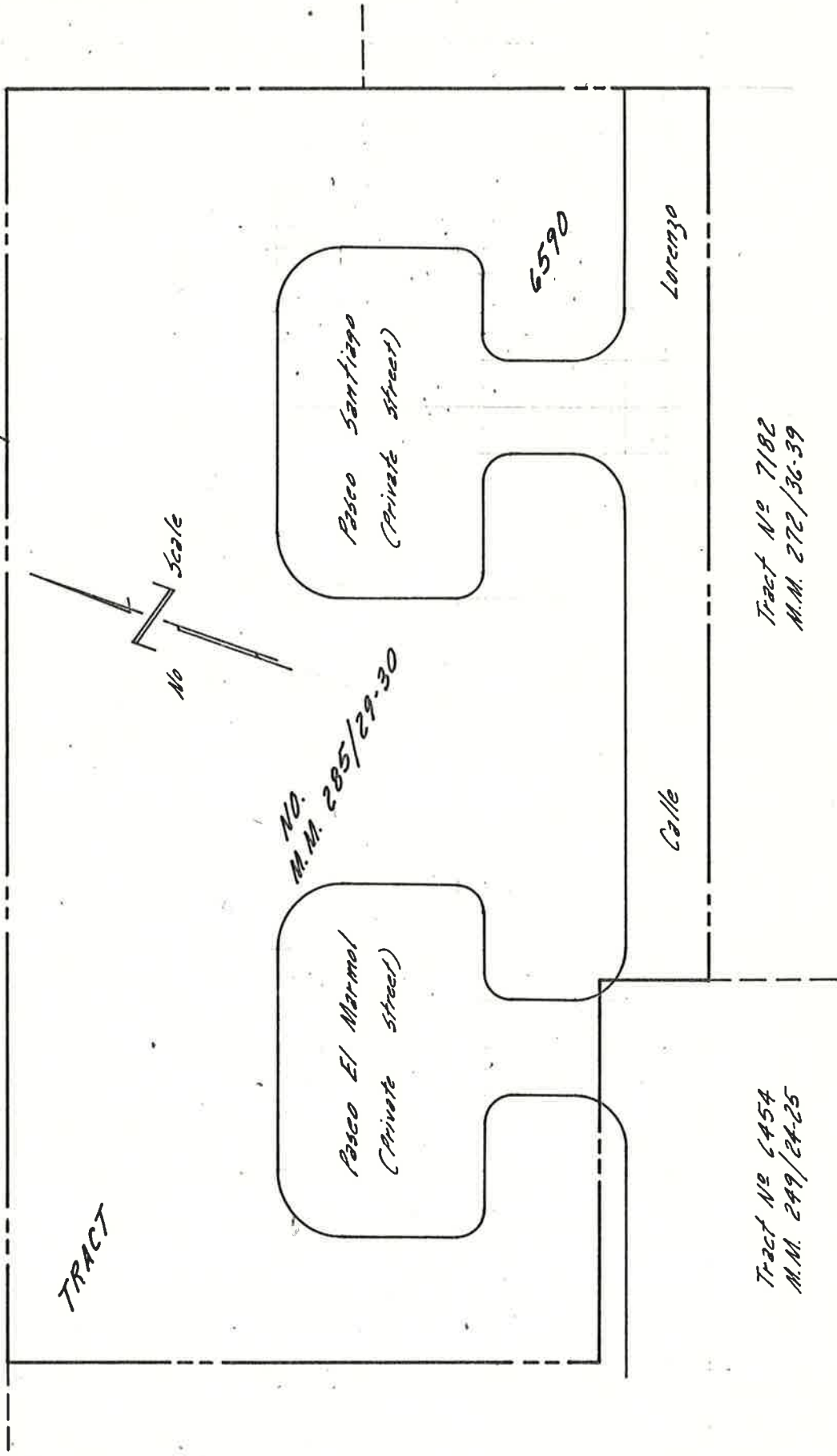
MAILING ADDRESS
P.O. BOX 1995
NEWPORT BEACH, CALIF. 92663

66

- = 2" I.P. tagged R.C.E. 13703 in subgrade and Spike and Tie on finished surface.
- = Set Lead and Tack in top of curb for & ties.

Tract No 5624
M.M. 205/32-35

Tract No 7230
M.M. 275/32-35



NO.
M.M. 285/29-30

Tract No 6454
M.M. 249/24-25

Tract No 7182
M.M. 272/36-39



**R. M. Galloway
& Associates**

CIVIL ENGINEERS & PLANNERS
LAND AND MINERAL SURVEYORS/LANDSCAPE ARCHITECTS

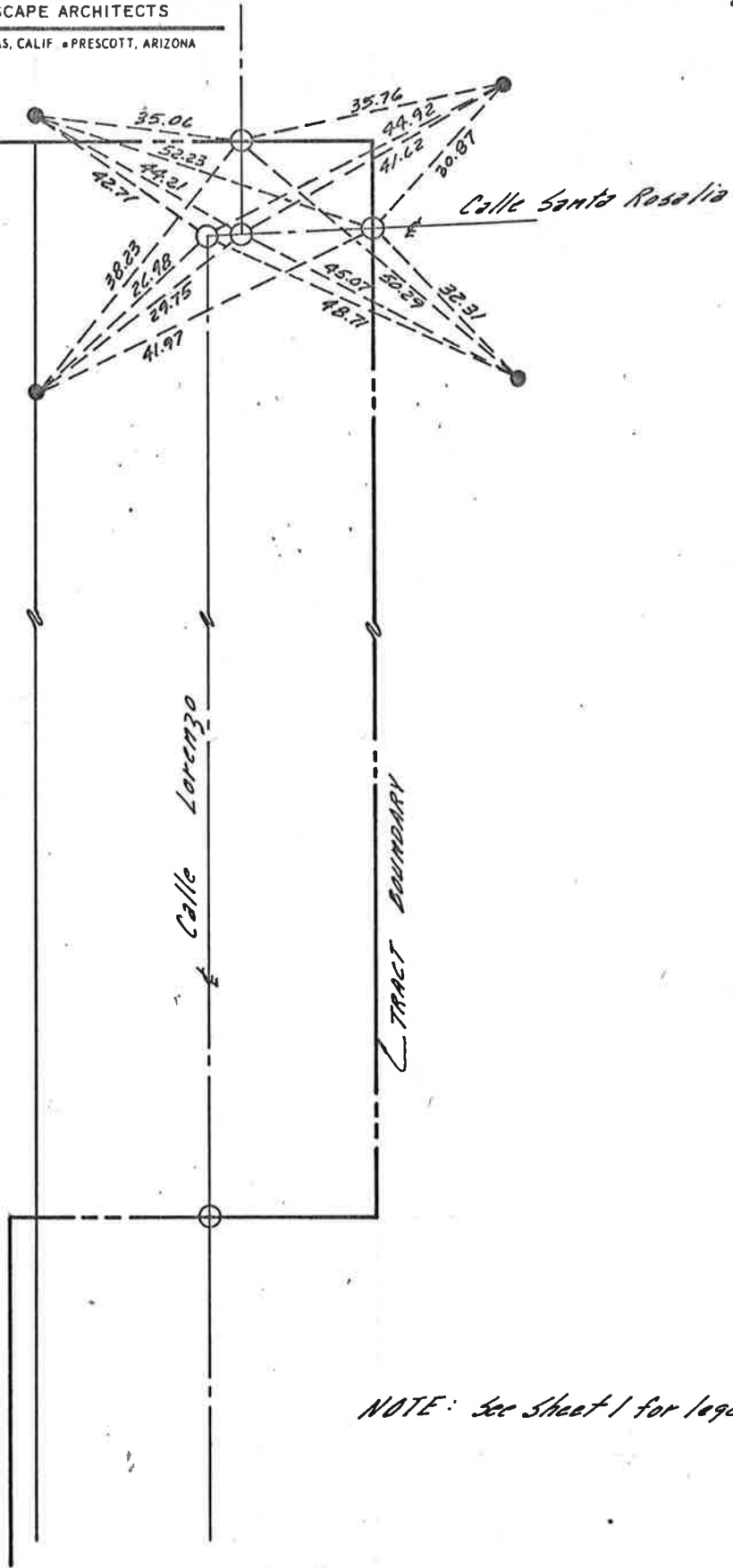
4 Tie Lines - Tract No 6590

2 of 2

NEWPORT BEACH/COSTA MESA • SAN FRANCISCO • LOS ANGELES • SAN DIEGO • ALTURAS, CALIF • PRESCOTT, ARIZONA

6. OFFICE BUILDING
17. ABRILLO, COSTA MESA, CALIF.
7. 1995

MAILING ADDRESS
P.O. BOX 1995,
NEWPORT BEACH, CALIF. 92663



NOTE: See Sheet 1 for legend.