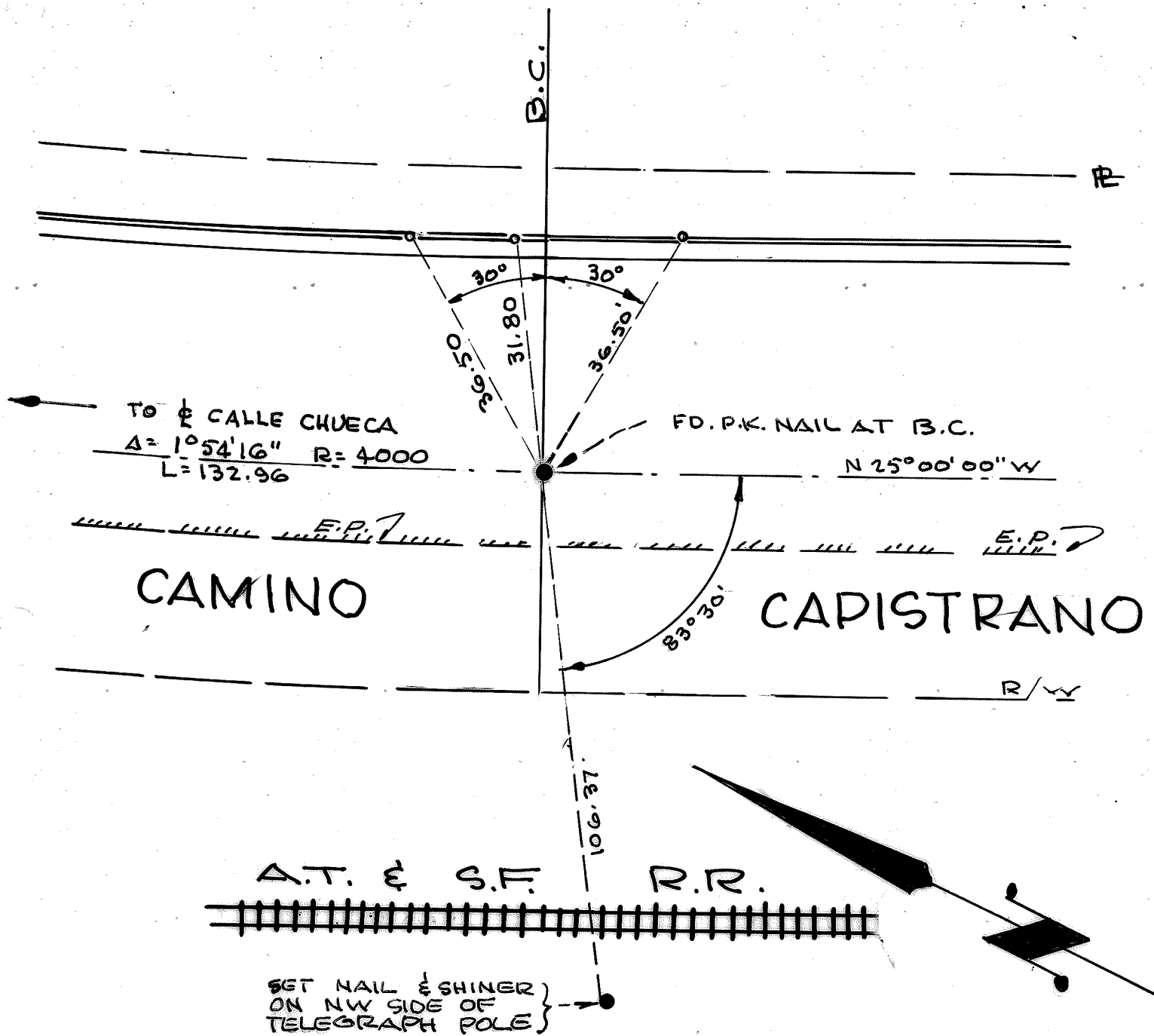


MONUMENT TIES

CASITAS CAPISTRANO

TRACT 5624



LEGEND

- SET SHURE-SET NAILS ON CONC. CURB UNLESS NOTED OTHERWISE.

PREPARED IN OFFICE OF:
 R.J. TOAL & ASSOCIATES
 1621 E. 17TH ST.
 SANTA ANA, CALIFORNIA

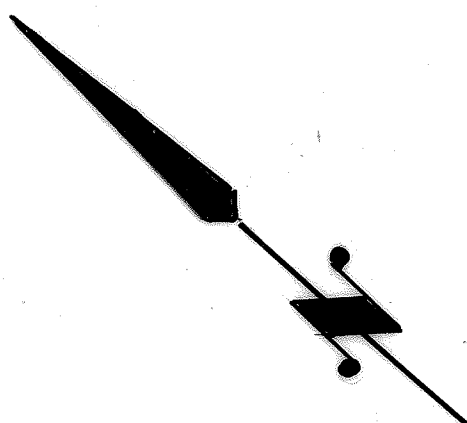
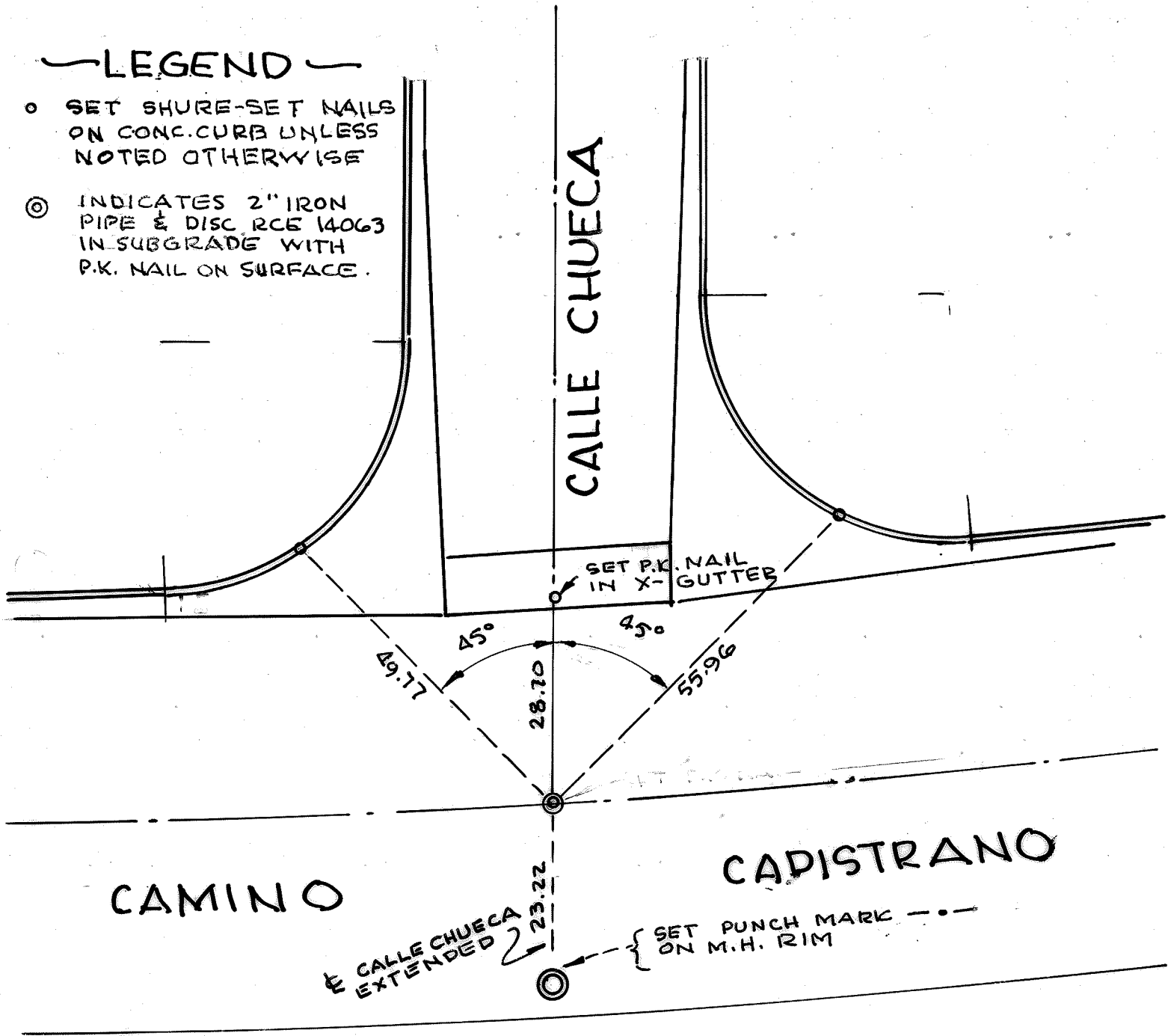
20 AUGUST, 1966

MONUMENT TIES

CASITAS CAPISTRANO TRACT 5624

LEGEND

- SET SHURE-SET NAILS ON CONC. CURB UNLESS NOTED OTHERWISE
- ⊙ INDICATES 2" IRON PIPE & DISC RCE 14063 IN SUBGRADE WITH P.K. NAIL ON SURFACE.



PREPARED IN OFFICE OF:
 R.J. TOAL & ASSOCIATES
 1621 E. 17TH ST
 SANTA ANA, CALIFORNIA

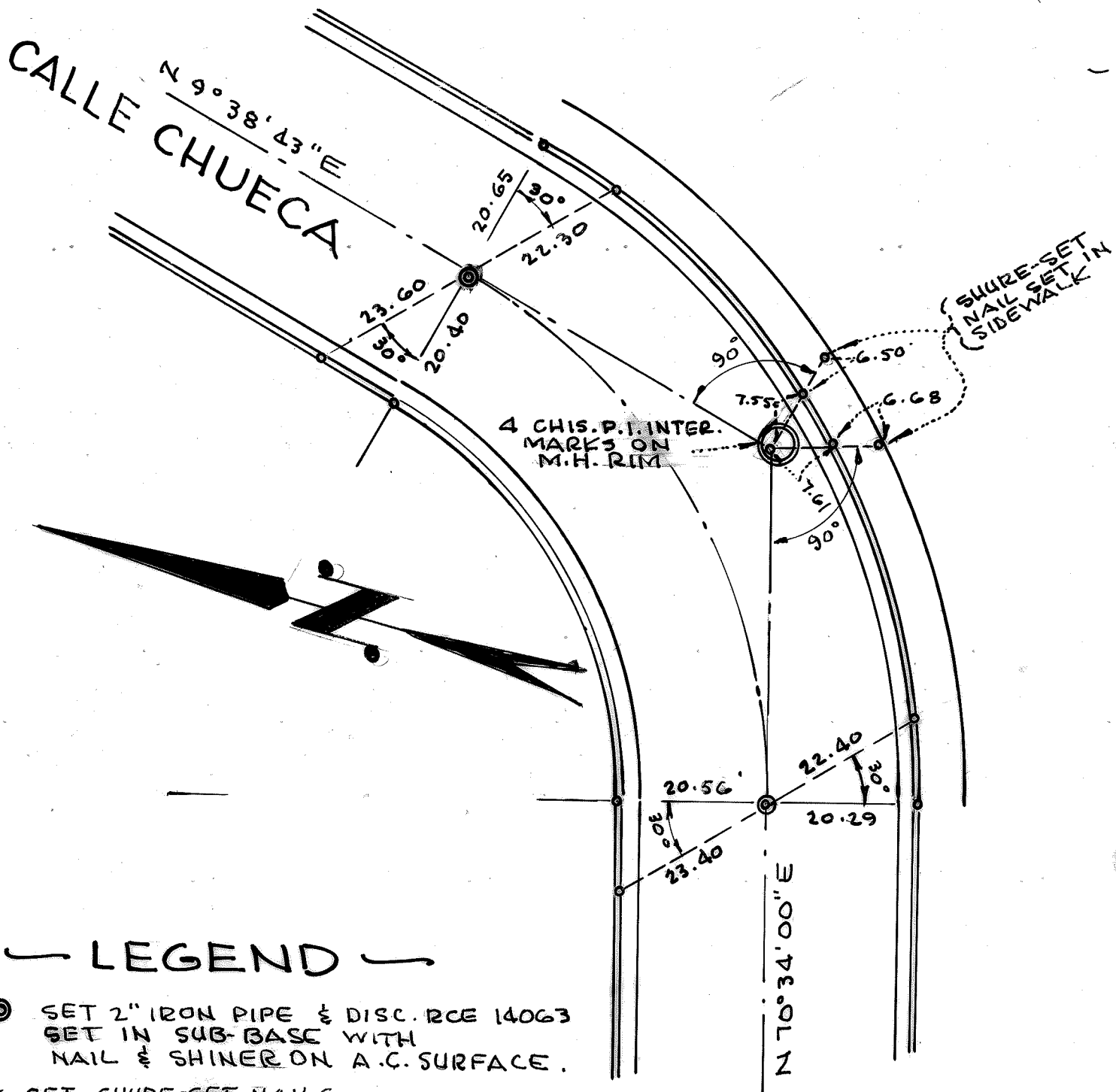
20 AUGUST, 1966

MONUMENT

CASITAS CAPISTRANO

TIES

TRACT 5624



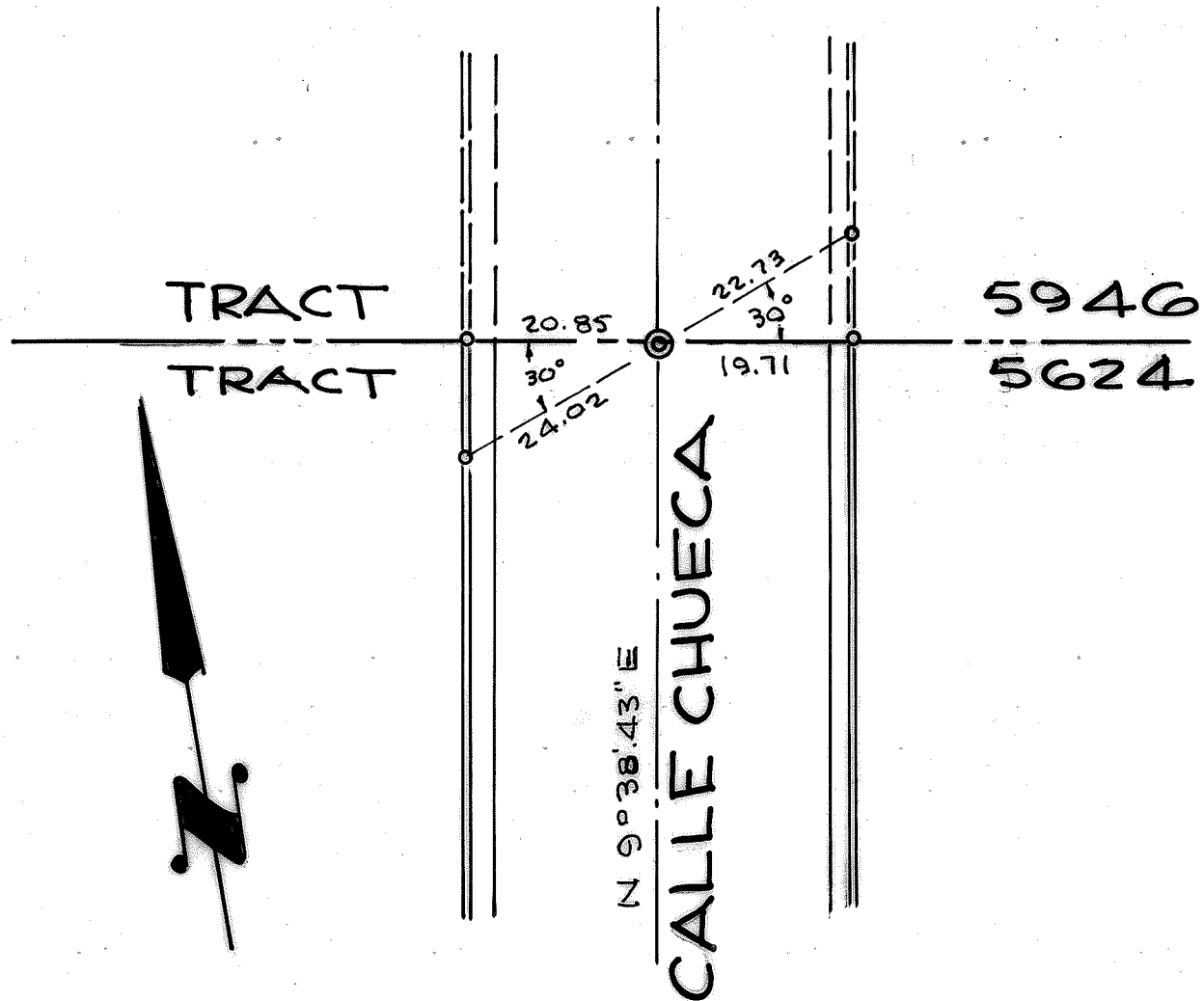
LEGEND

- ⊙ SET 2" IRON PIPE & DISC. RCE 14063 SET IN SUB-BASE WITH NAIL & SHINER ON A.C. SURFACE.
- ⊙ SET SHURE-SET NAILS ON CONC. CURB UNLESS OTHERWISE NOTED.

PREPARED IN OFFICE OF:
R. J. TOAL & ASSOCIATES
 1621 E. 17TH ST.
 SANTA ANA, CALIFORNIA

MONUMENT TIES

CASITAS CAPISTRANO TRACT 5624



— LEGEND —

- SET SHURE-SET NAILS ON CONC. CURB.
- ⊙ INDICATES 2" IRON PIPE & DISC R.C.E 14063 IN SUBGRADE WITH NAIL & SHINER ON A.C. PAVEMENT.

PREPARED IN OFFICE OF:
 R.J. TOAL & ASSOCIATES
 1621 E. 17TH ST.
 SANTA ANA, CALIF

20 AUGUST, 1966