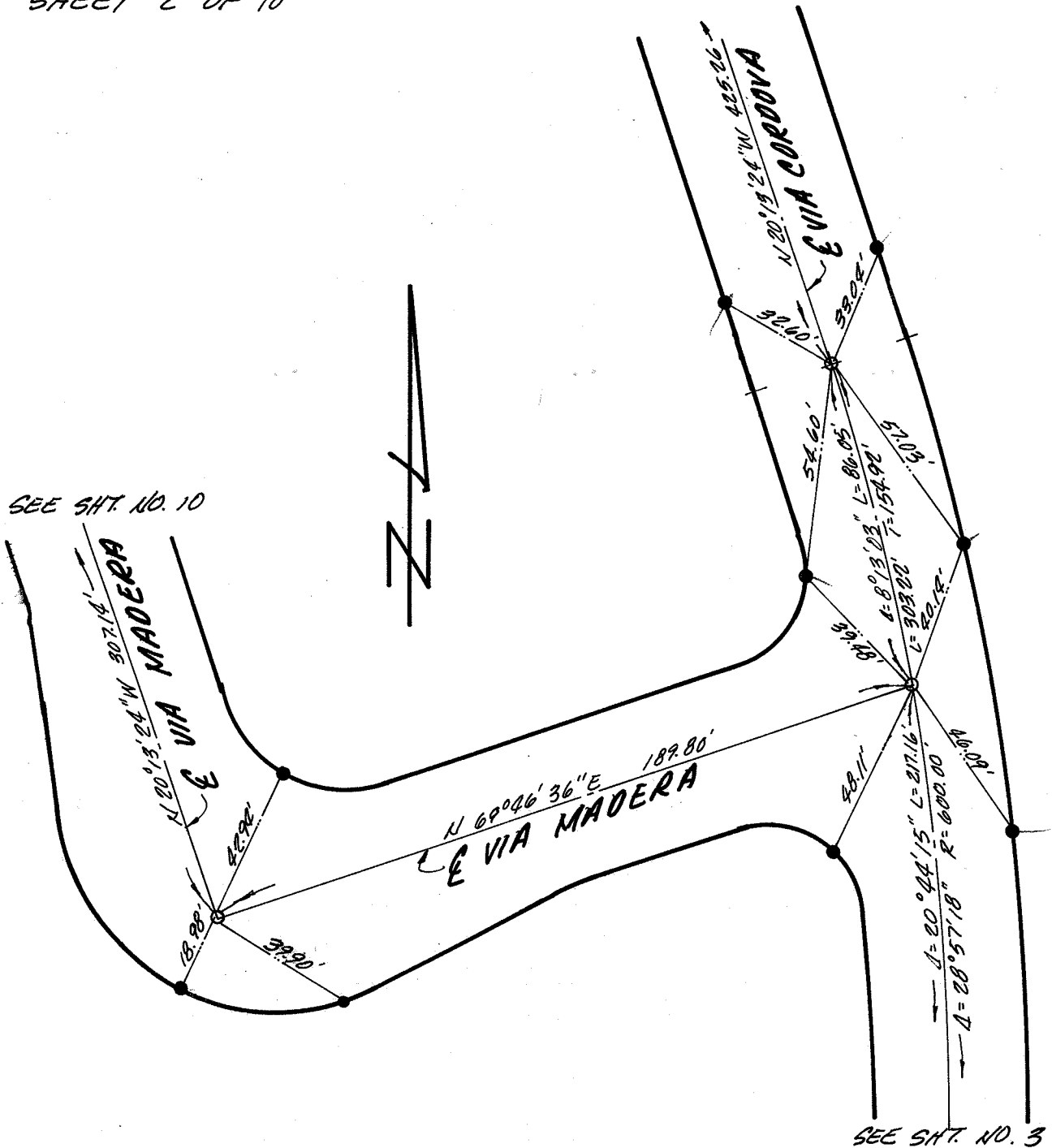


LEGEND

- INDICATES SET 2" I.P. & TAG RCE 17377 IN SUBGRADE WITH SAKE & WASHER STAMPED R.C.E. 17377 IN FINISH PAVEMENT.
- INDICATES LEAD & TACK & TAG RCE 17377 IN TOP OF CURB.

TRACT NO. 8264 STREET CENTERLINE TIES	
SAN JUAN CAPISTRANO CALIFORNIA	
SCALE 1"=40'	NOVEMBER, 1976
VALLEY CONSULTANTS, INC. 20951 BROOKHURST ST. HUNTINGTON BEACH, CA. 92646 714-962-4464	

SEE SHT. NO. 10



SEE SHT. NO. 3

LEGEND

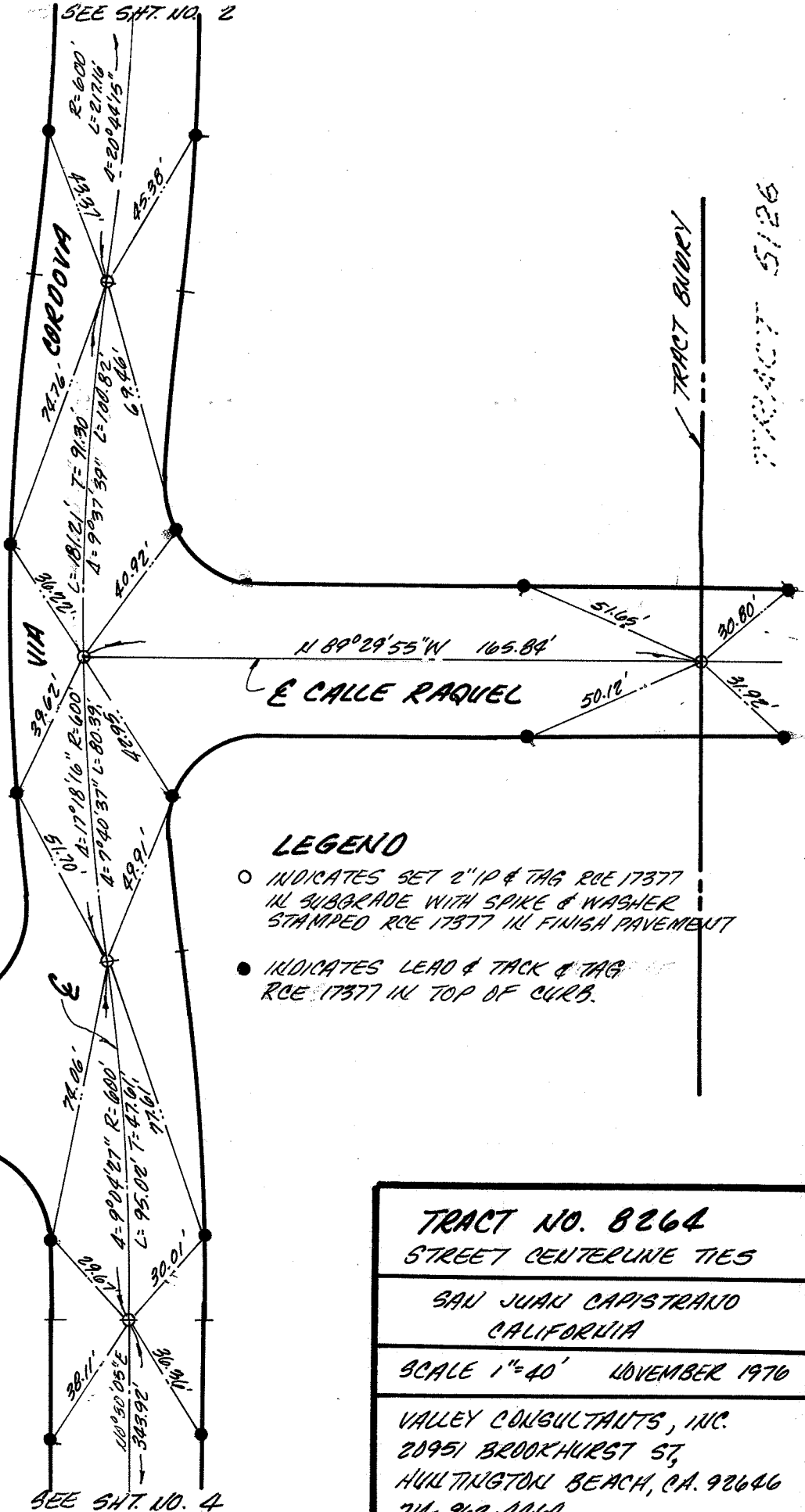
- INDICATES SET 2" ID & TAG RCE 17377 IN SUBGRADE WITH SPIKE & WASHER STAMPED RCE 17377 IN FINISH PAVEMENT.
- INDICATES LEAD & TACK & TAG RCE 17377 IN TOP OF CURB.

<p>TRACT NO. 8264 STREET CENTERLINE TIES</p>	
<p>SAN JUAN CAPISTRANO CALIFORNIA</p>	
<p>SCALE 1" = 40'</p>	<p>NOVEMBER 1976</p>
<p>VALLEY CONSULTANTS, INC. 20951 BROOKHURST, ST. HUNTINGTON BEACH, CA. 92646 TEL. 962-4464</p>	

SEE SHT. NO. 2



PASEO VENTURA
(PRIVATE ST.)

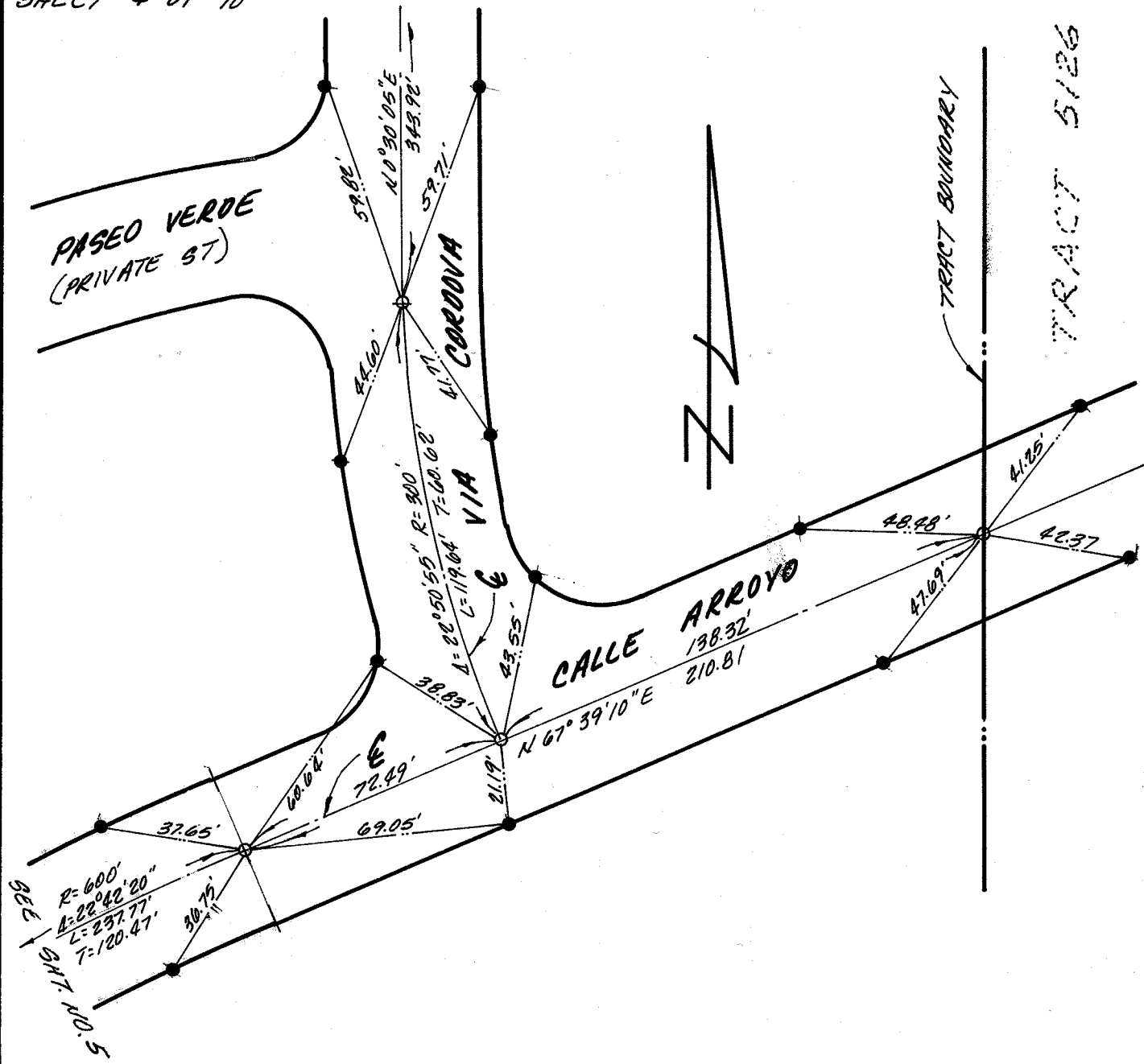


SEE SHT. NO. 4

LEGEND

- INDICATES SET 2" IP & TAG RCE 17377 IN SUBGRADE WITH SPIKE & WASHER STAMPED RCE 17377 IN FINISH PAVEMENT
- INDICATES LEAD & TACK & TAG RCE 17377 IN TOP OF CURB.

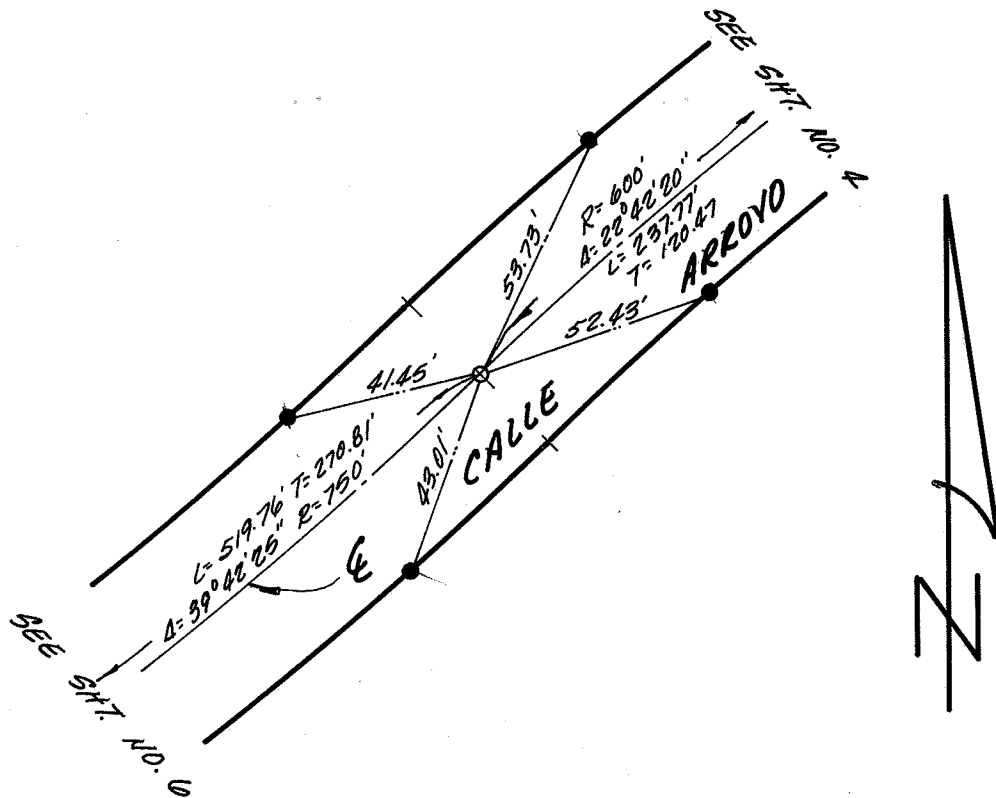
<p>TRACT NO. 8264 STREET CENTERLINE TIES</p>
<p>SAN JUAN CAPISTRANO CALIFORNIA</p>
<p>SCALE 1"=40' NOVEMBER 1970</p>
<p>VALLEY CONSULTANTS, INC. 20951 BROOKHURST ST, HUNTINGTON BEACH, CA. 92646 714-962-4464</p>



LEGEND

- INDICATES SET 2" I.P. & TAG RCE 17377 IN SUBGRADE WITH SPIKE & WASHER STAMPED RCE 17377 IN FINISH PAVEMENT.
- INDICATES LEAD & TACK & TAG RCE 17377 IN TOP OF CURB.

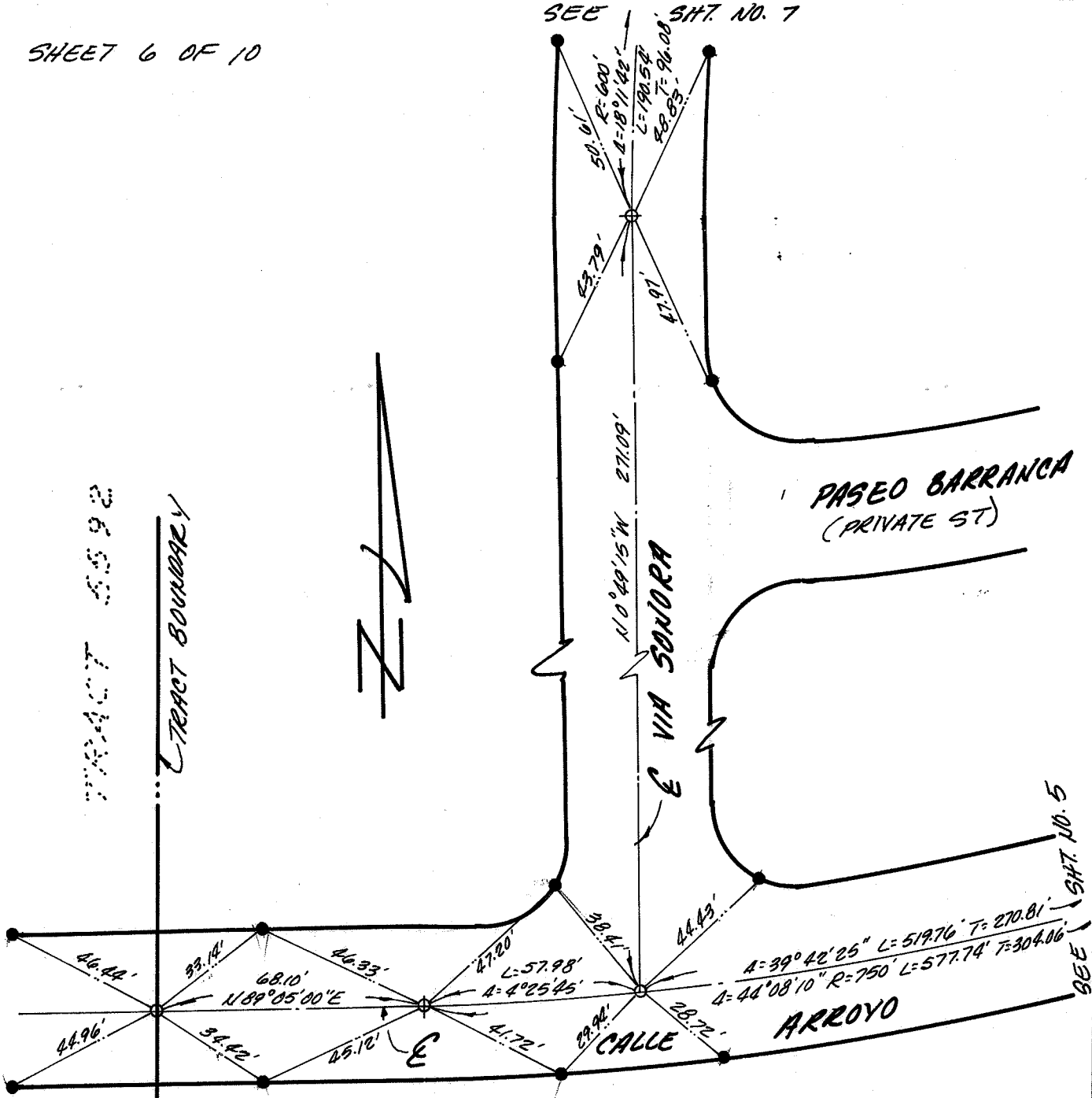
<p>TRACT NO. 8264 STREET CENTERLINE TIES</p>
<p>SAN JUAN CAPISTRANO CALIFORNIA</p>
<p>SCALE 1"=40' NOVEMBER 1976</p>
<p>VALLEY CONSULTANTS, INC. 20951 BROOKHURST ST. HUNTINGTON BEACH, CA. 92646 714-962-4464</p>



LEGEND

- INDICATES SET 2" IP & TAG RCE 17377 IN SUBGRADE WITH SPIKE & WASHER STAMPED RCE 17377 IN FINISH PAVEMENT.
- INDICATES LEAD & TACK & TAG RCE 17377 IN TOP OF CURB.

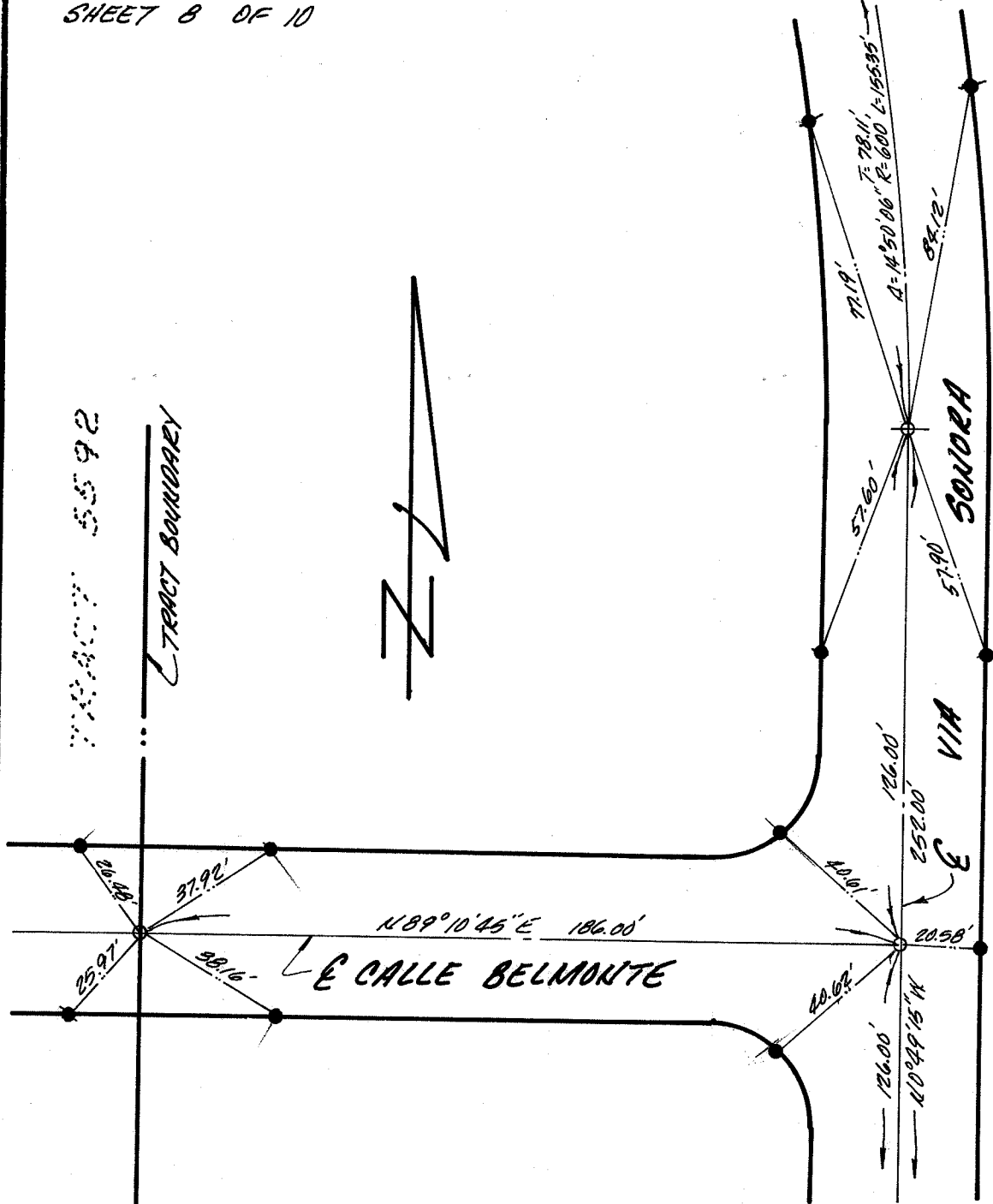
<p>TRACT NO. 8264 STREET CENTERLINE TIES</p>
<p>SAN JUAN CAPISTRANO CALIFORNIA</p>
<p>SCALE 1" = 40' NOVEMBER 1976</p>
<p>VALLEY CONSULTANTS, INC. 20951 BROOKHURST ST. HUNTINGTON BEACH, CA. 92646 714-962-4464</p>



LEGEND

- INDICATES SET 2" I.P. & TAG RCE 17377 IN SUBGRADE WITH SPIKE & WASHER STAMPED RCE 17377 IN FINISH PAVEMENT.
- INDICATES LEAD & TACK & TAG RCE 17377 IN TOP OF CURB.

<p>TRACT NO. 8264 STREET CENTERLINE TIES</p>	
<p>SAN JUAN CAPISTRANO CALIFORNIA</p>	
<p>SCALE 1" = 40'</p>	<p>NOVEMBER 1976</p>
<p>VALLEY CONSULTANTS, INC. 20951 BROOKHURST ST. HUNTINGTON BEACH, CA. 92646 714 962-4464</p>	



TRACT BOUNDARY



LEGEND

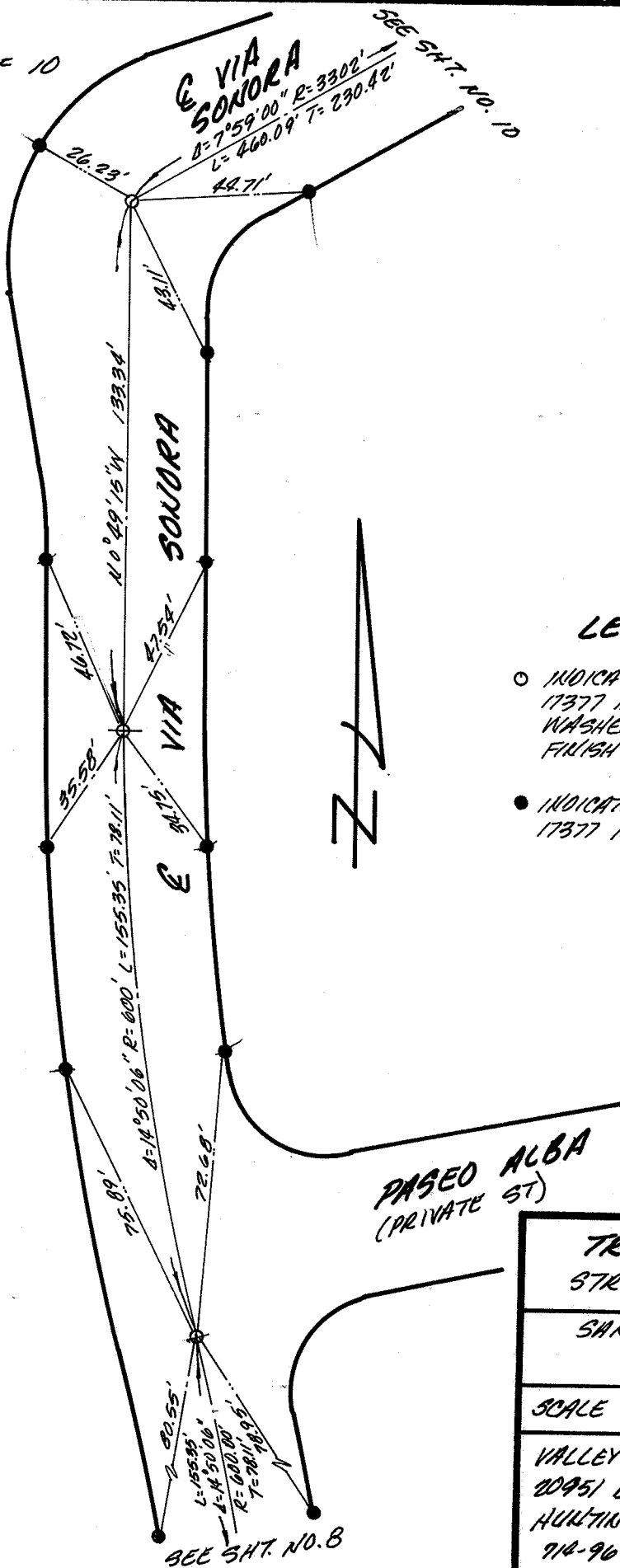
- INDICATES SET 2" I.P. & TAG R.C.E. 17377 IN SUBGRADE WITH SPIKE & WASHER STAMPED R.C.E. 17377 IN FINISH PAVEMENT.
- INDICATES LEAD & TACK & TAG R.C.E. 17377 IN TOP OF CURB.

SEE SH. NO. 7

TRACT NO. 8264	
STREET CENTERLINE TIES	
SAN JUAN CAPISTRANO CALIFORNIA	
SCALE 1" = 40'	NOVEMBER 1976
VALLEY CONSULTANTS, INC. 20951 BROOKHURST ST. HUNTINGTON BEACH, CA. 92646 714-962-4464	

SEE SH. NO. 10

E VIA SONORA



LEGEND

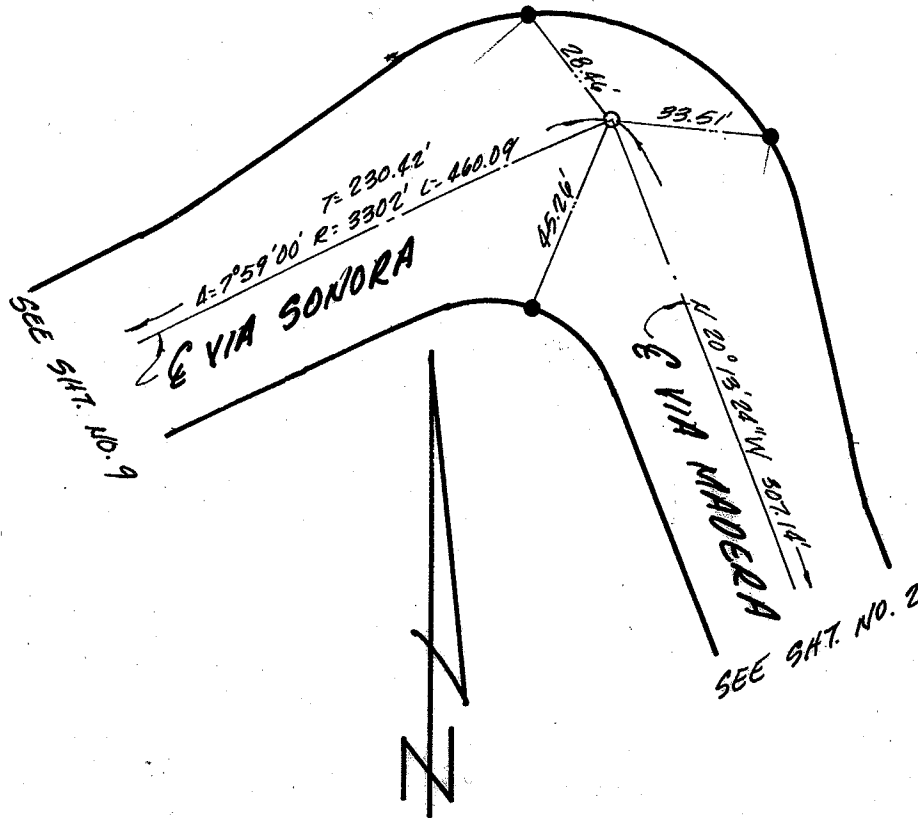
- INDICATES SET 2" I.P. & TAG R.C.E. 17377 IN SUBGRADE WITH SPIKE & WASHER STAMPED R.C.E. 17377 IN FINISH PAVEMENT.
- INDICATES LEAD & TACK & TAG R.C.E. 17377 IN TOP OF CURB.



PASEO ALBA
(PRIVATE ST)

TRACT NO. 8264 STREET CENTERLINE TIES
SAN JUAN CAPISTRANO CALIFORNIA
SCALE 1"=40' NOVEMBER 1976
VALLEY CONSULTANTS, INC. 20951 BROOKHURST ST. HUNTINGTON BEACH, CA. 92646 714-962-4464

SEE SH. NO. 8



LEGEND

- INDICATES SET 2" I.P. & TAG RCE 17377 IN SUBGRADE WITH SPIKE & WASHER STAMPED RCE 17377 IN FINISH PAVEMENT.
- INDICATES LEAD & TACK & TAG RCE 17377 IN TOP OF CURB.

<p>TRACT NO. 8264 STREET CENTERLINE TIES</p>
<p>SAN JUAN CAPISTRANO CALIFORNIA</p>
<p>SCALE 1"=40' NOVEMBER 1976</p>
<p>VALLEY CONSULTANTS, INC. 20951 BROOKHURST ST. HUNTINGTON BEACH, CA. 92646 714-962-4464</p>