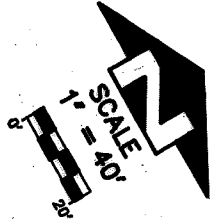


JOB NO. 89-2242

LOCKMAN & ASSOCIATES
CIVIL ENGINEERS

SURVEY BY C. JOHNSON, V. KELLY DATE 3/4/92

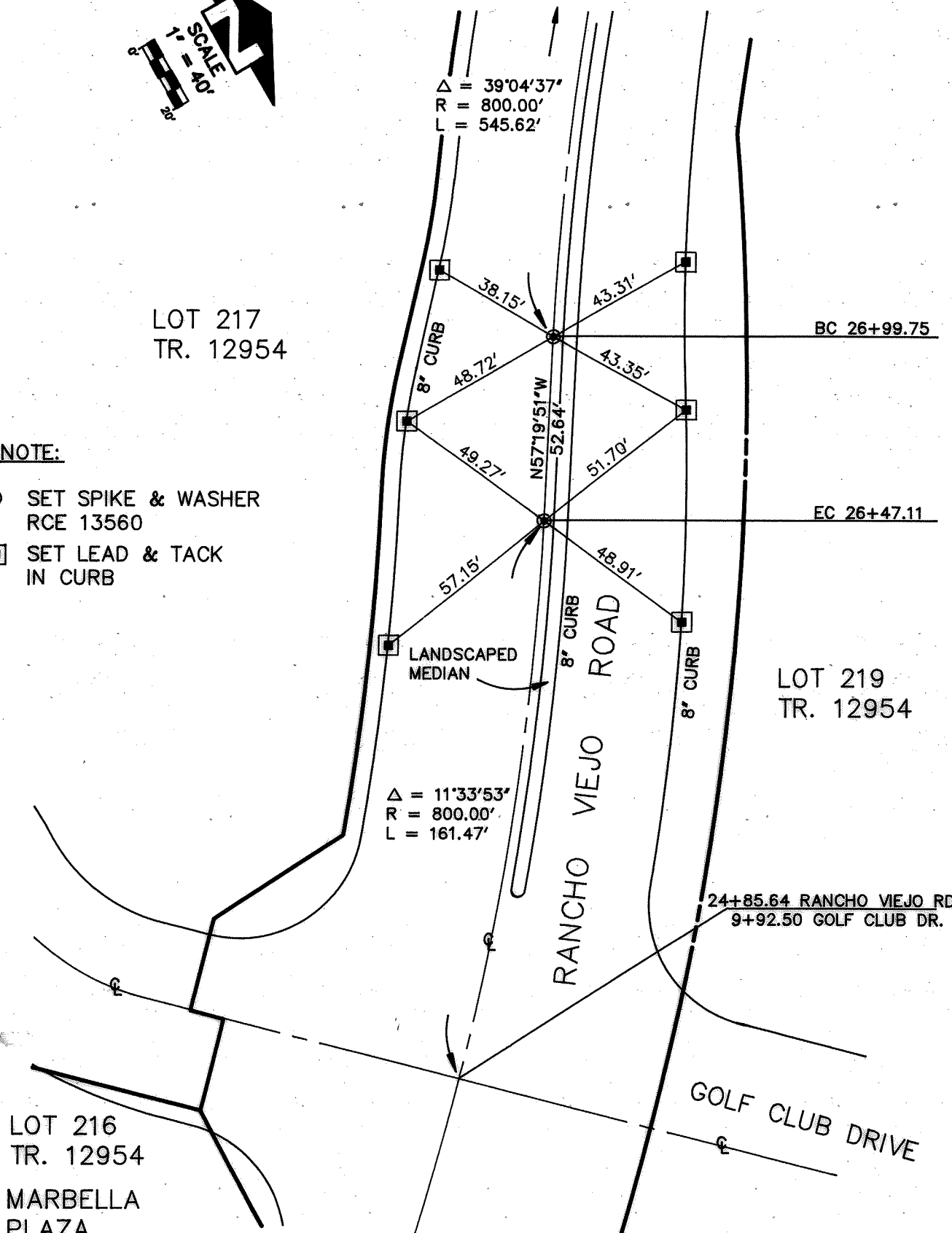
CHECKED BY L.F. JOHNSON DATE 3/5/92



LOT 217
TR. 12954

NOTE:

- ⊙ SET SPIKE & WASHER
RCE 13560
- ▣ SET LEAD & TACK
IN CURB



LOT 216
TR. 12954
MARBELLA
PLAZA

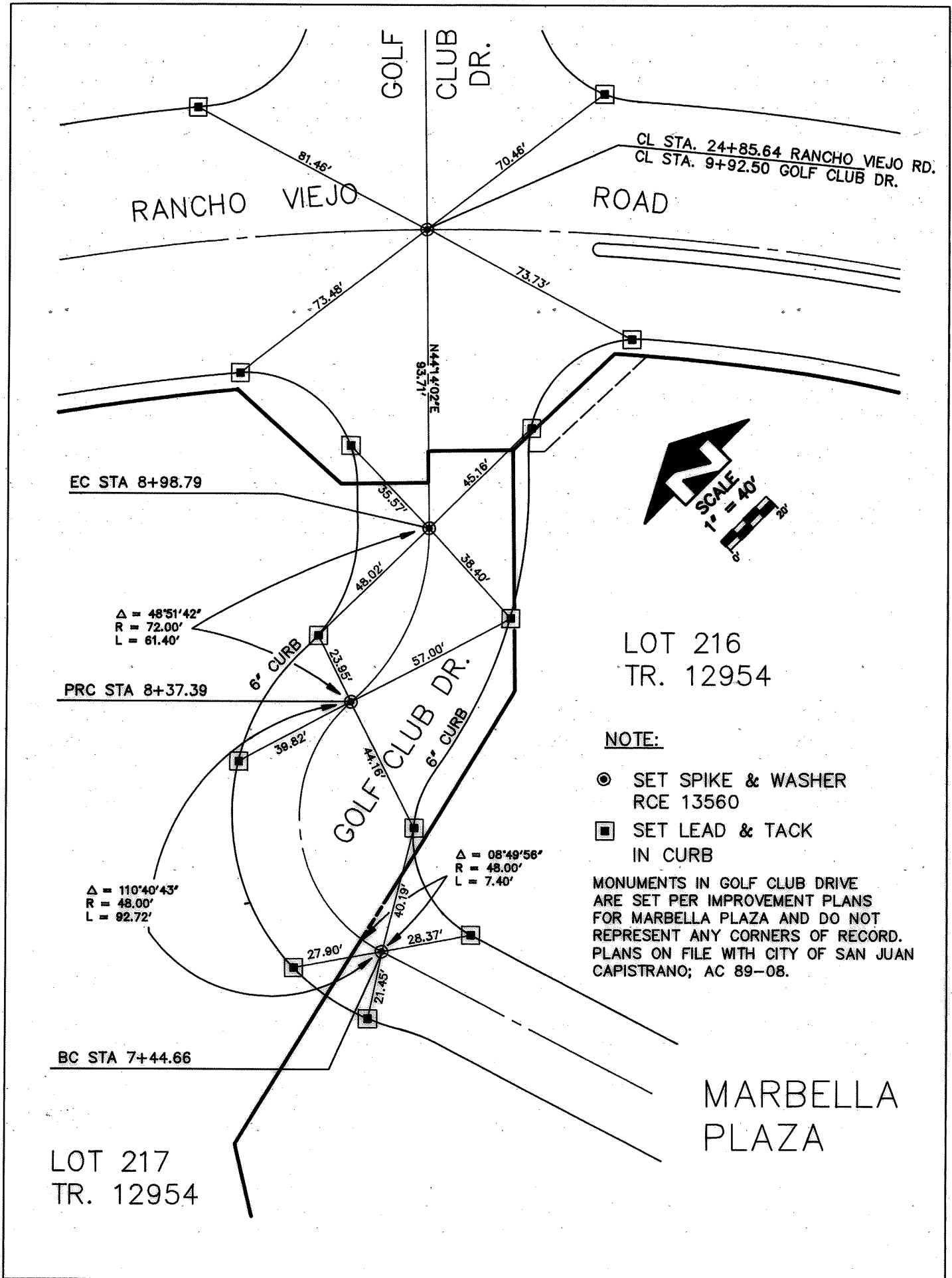
LOT 219
TR. 12954

GOLF CLUB DRIVE

JOB NO. 89-2432

LOCKMAN & ASSOCIATES
CIVIL ENGINEERS

SURVEY BY C. JOHNSON, V. KELLY DATE 3/4/92
CHECKED BY L.F. JOHNSON DATE 3/5/92



LOT 216
TR. 12954

NOTE:

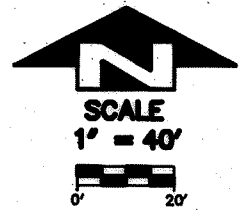
- ⊙ SET SPIKE & WASHER
RCE 13560
 - ◻ SET LEAD & TACK
IN CURB
- MONUMENTS IN GOLF CLUB DRIVE
ARE SET PER IMPROVEMENT PLANS
FOR MARBELLA PLAZA AND DO NOT
REPRESENT ANY CORNERS OF RECORD.
PLANS ON FILE WITH CITY OF SAN JUAN
CAPISTRANO; AC 89-08.

LOT 217
TR. 12954

MARBELLA
PLAZA

LOCKMAN & ASSOCIATES
CIVIL ENGINEERS

SURVEY BY C. JOHNSON, V. KELLY DATE FEB. 27, 1992
CHECKED BY L.F. JOHNSON DATE FEB. 28, 1992



LOT 219
TR. 12954

LOT 216
TR. 12954

DRIVEWAY INTO
MARBELLA PLAZA

LEAD & TACK SET
1' NORTHERLY OF
EXISTING CATCH BASIN

S'LY LINE OF
TRACT 12954

NOTE:

- ▲ FOUND LEAD & TACK PER ORIGINAL TIE NOTE.
- SET 1' I.P. & TAG RCE 13560
- SET LEAD & TACK

