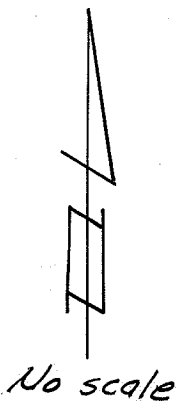


Total Curve
 $R=1000'$
 $\Delta=19^{\circ}34'$
 $L=341.50'$
 $T=172.43'$

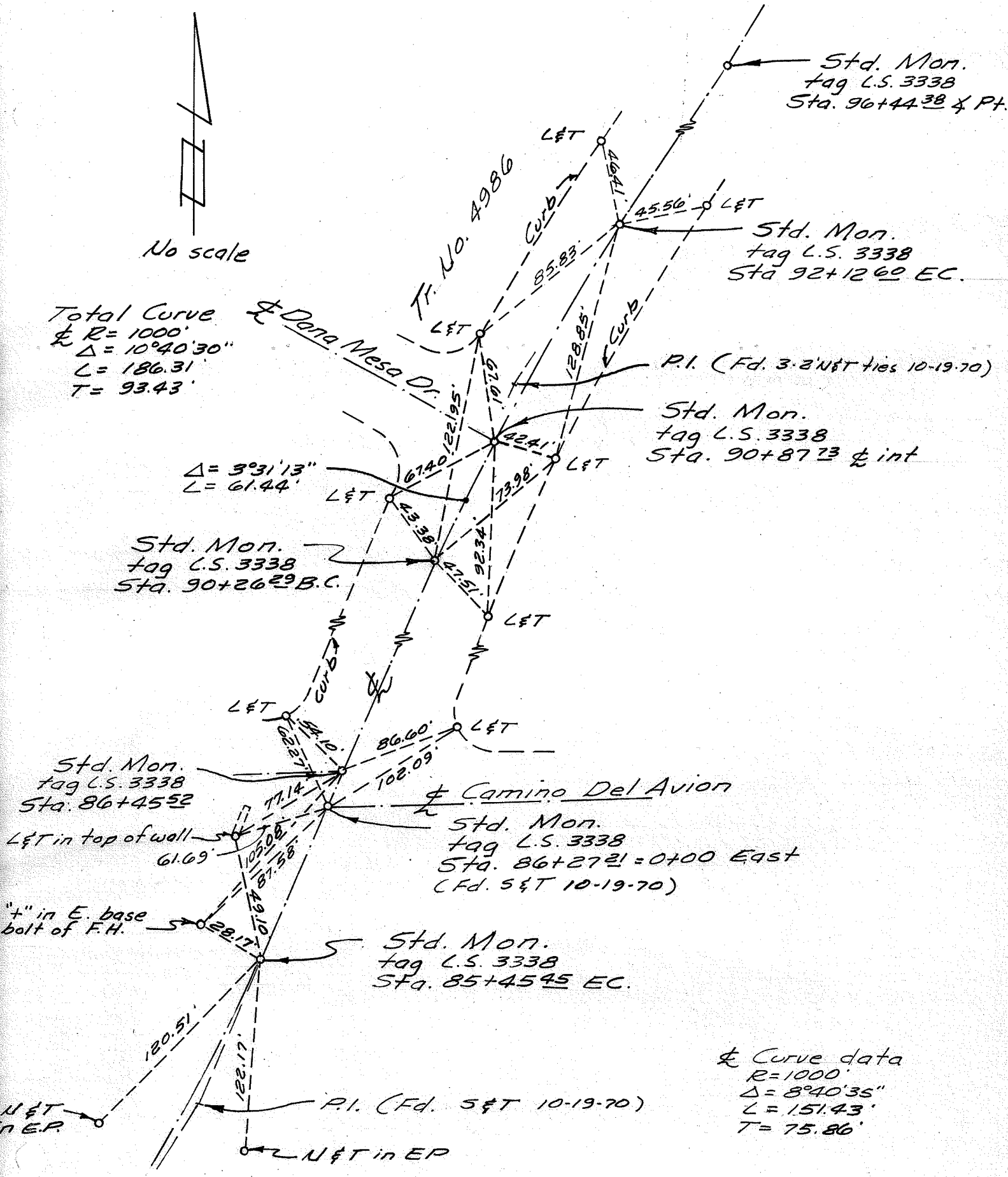
Total Curve
 $R=2000'$
 $\Delta=0^{\circ}46'19''$
 $L=20.95'$
 $T=13.47'$

Monument Ties For Del Obispo Street AHFP No. 540
 San Juan Capistrano, California

William E. Billings
 1-5-73 L.S. No. 3338



Total Curve
 $R = 1000'$
 $\Delta = 10^\circ 40' 30''$
 $L = 186.31'$
 $T = 93.43'$



Curve data
 $R = 1000'$
 $\Delta = 8^\circ 40' 35''$
 $L = 151.43'$
 $T = 75.86'$

Monument Ties For Del Obispo Street AHFP No. 540
 San Juan Capistrano, California

William E. Billings
 1-4-73 L.S. No. 3338

Fd. 3/4" pipe 14" deep
per CSTB 142-20
9-29-70

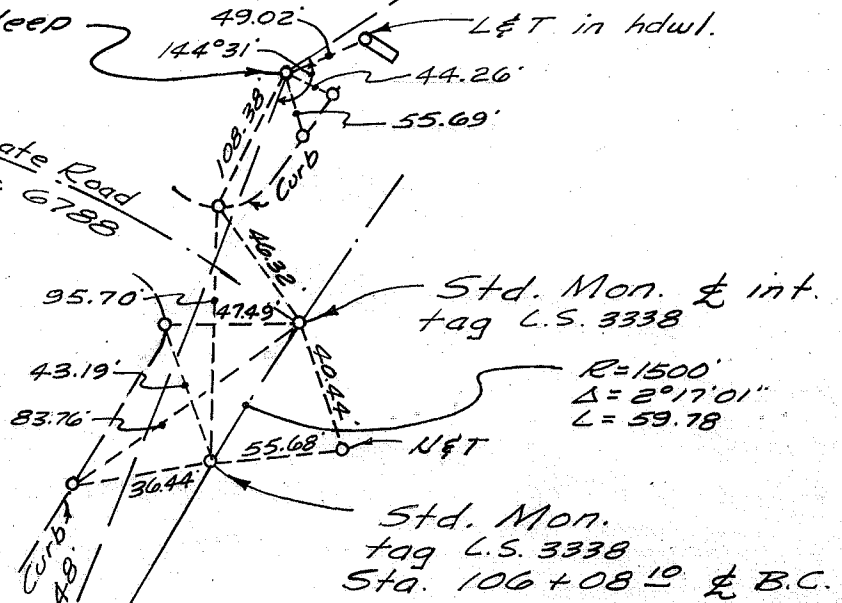
3/4" pipe
Old E.C.

Private Road
per Tr. 6788

L&T in hdwl.



No Scale



Old &

& per AHFP No. 540

171°56'15"
Old P.I. fd nothing
per CSTB 142-25.
Set nail county
record from North

Notched metal curb face
& painted white

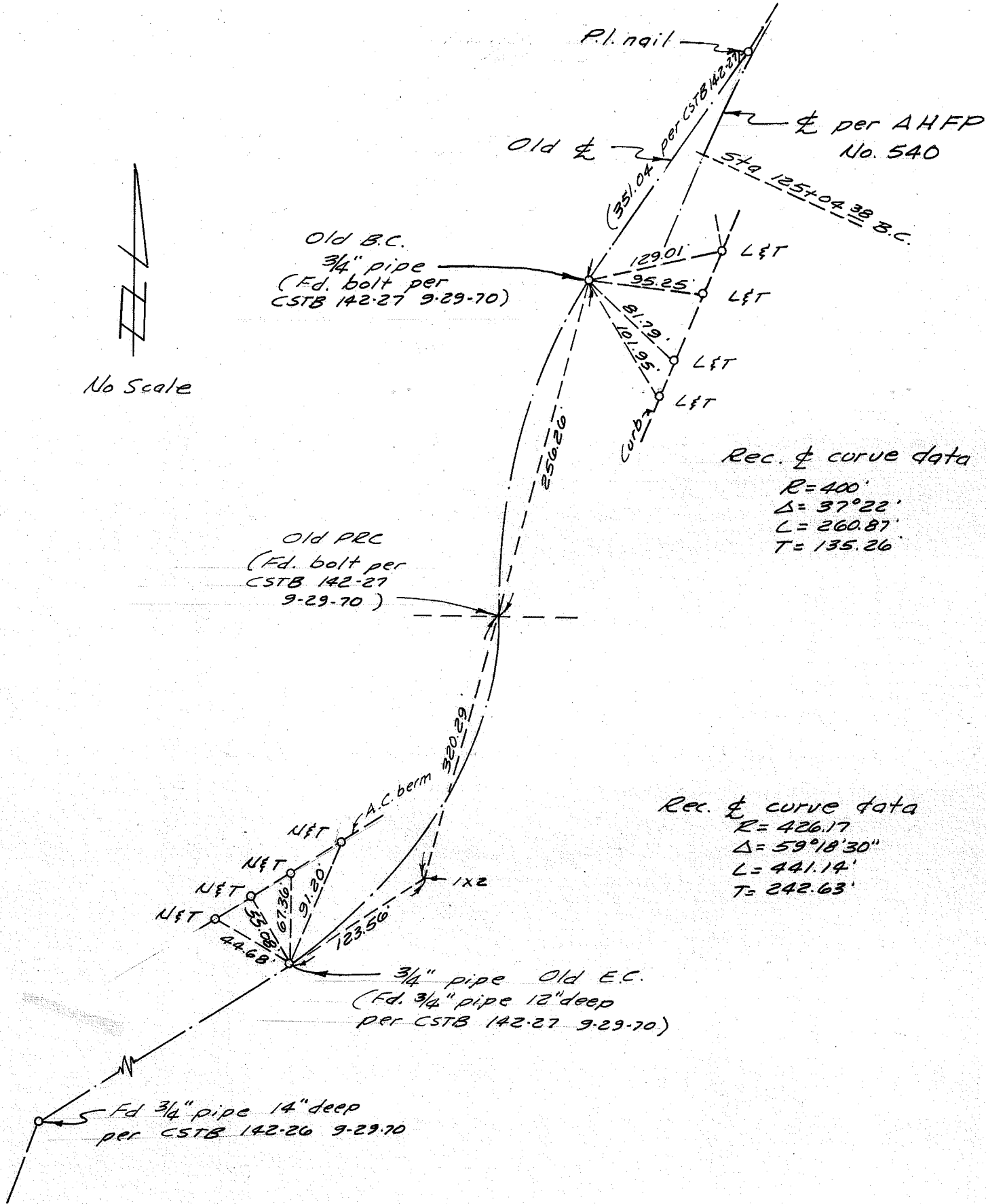
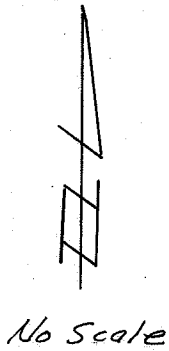
Tr. No. 4986

Std. Mon. tag L.S. 3338
Sta. 96+44.38 & Angle Pt.
(Fd. 2x2 10-19-70)

Note: Set L&T. in top of
curb at points shown
thus ---o---

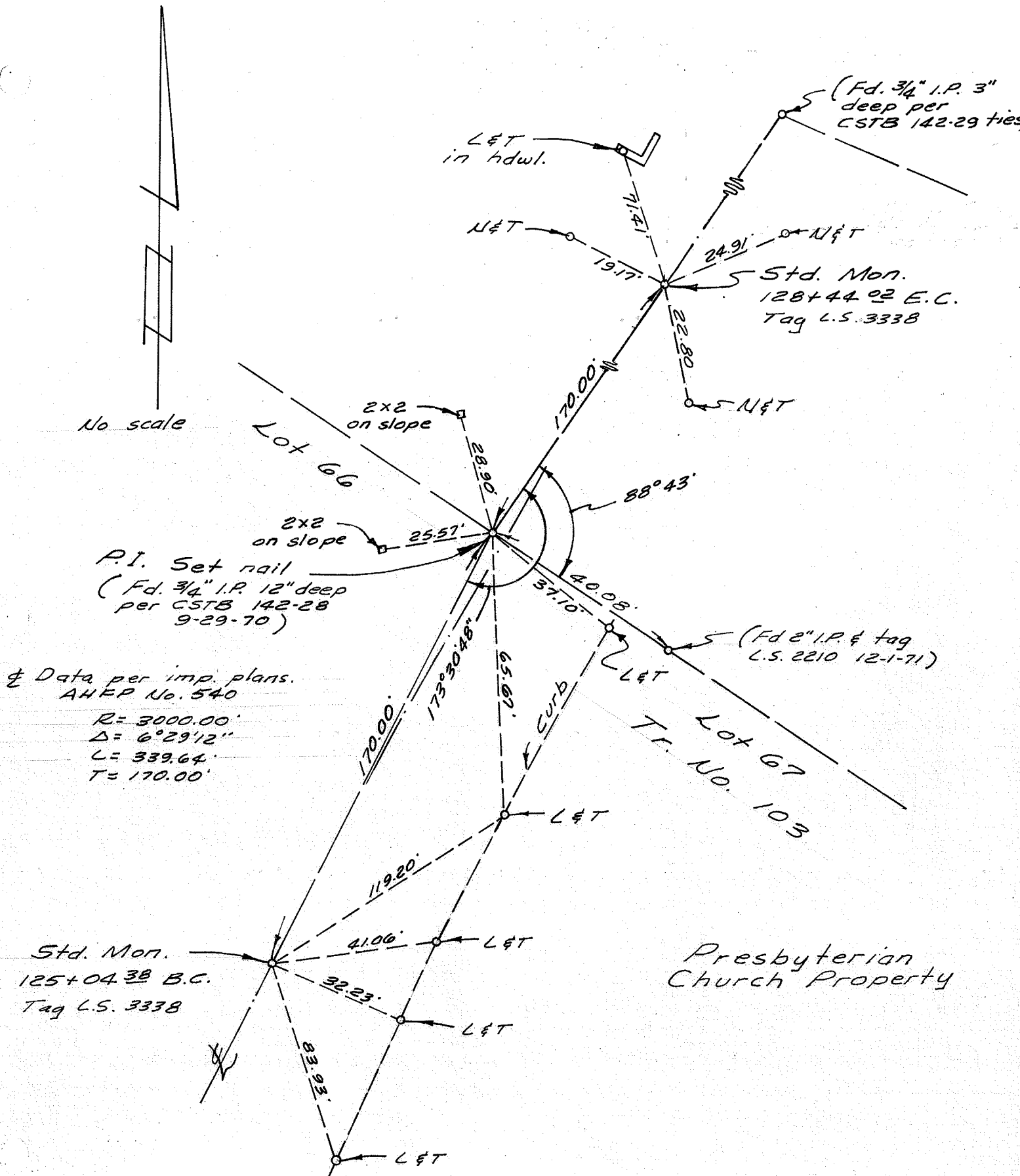
Monument Ties For Del Obispo Street, AHFP No. 540
San Juan Capistrano, California

William E. Billings
1-4-73 L.S. No. 3338



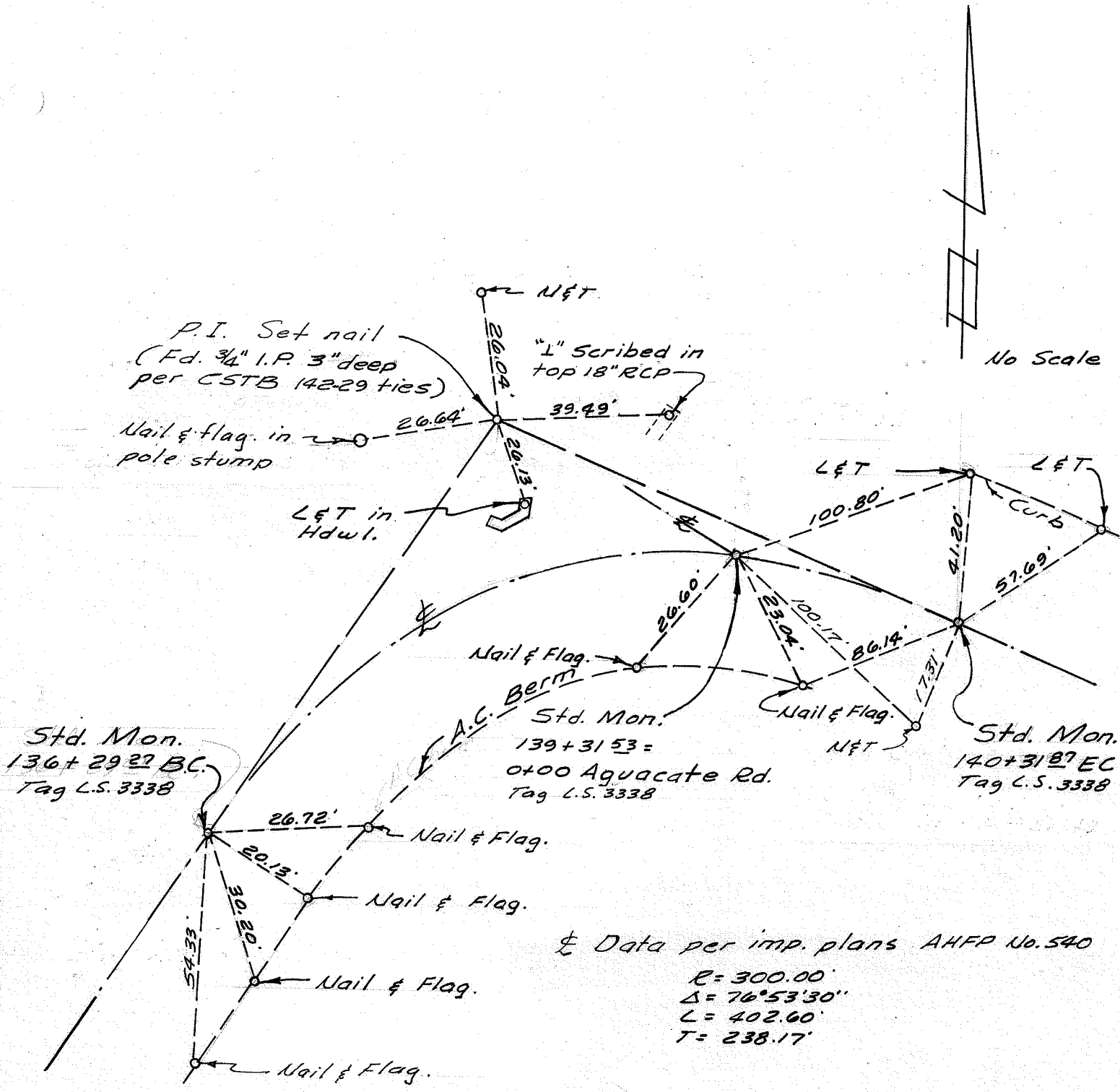
Monument Ties For Del Obispo Street, AHFP No. 540
 San Juan Capistrano, California

William E. Bittling
 12-22-72 C.S. No. 3338



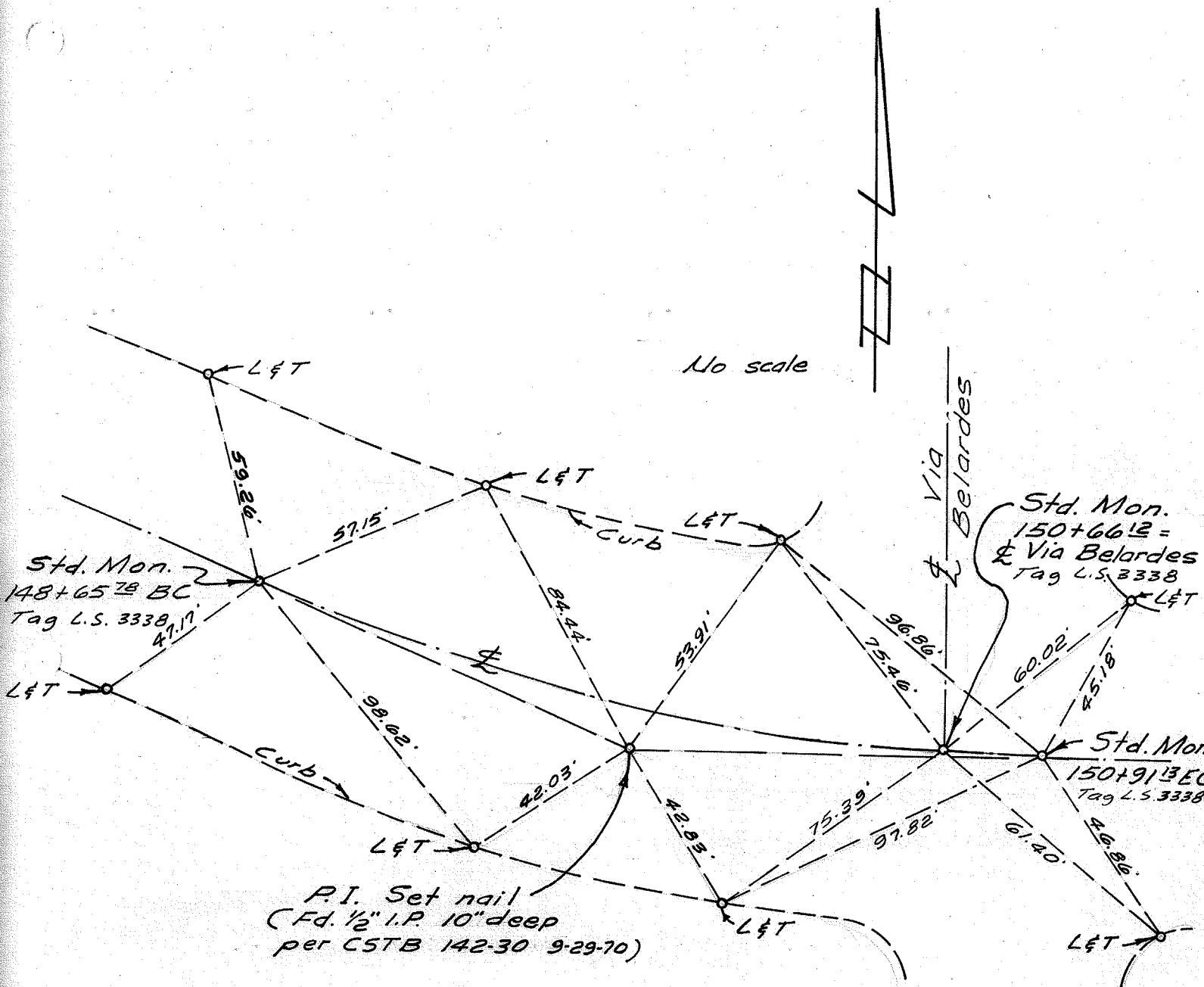
Monument Ties For Del Obispo Street, AHFP No. 540
 San Juan Capistrano, California

William E. Billings
 11-23-72 L.S. No. 3338



Monument Ties For Del Obispo Street, AHFP No. 540
San Juan Capistrano, California

William E. Billings
11-23-72 L.S. No. 3338

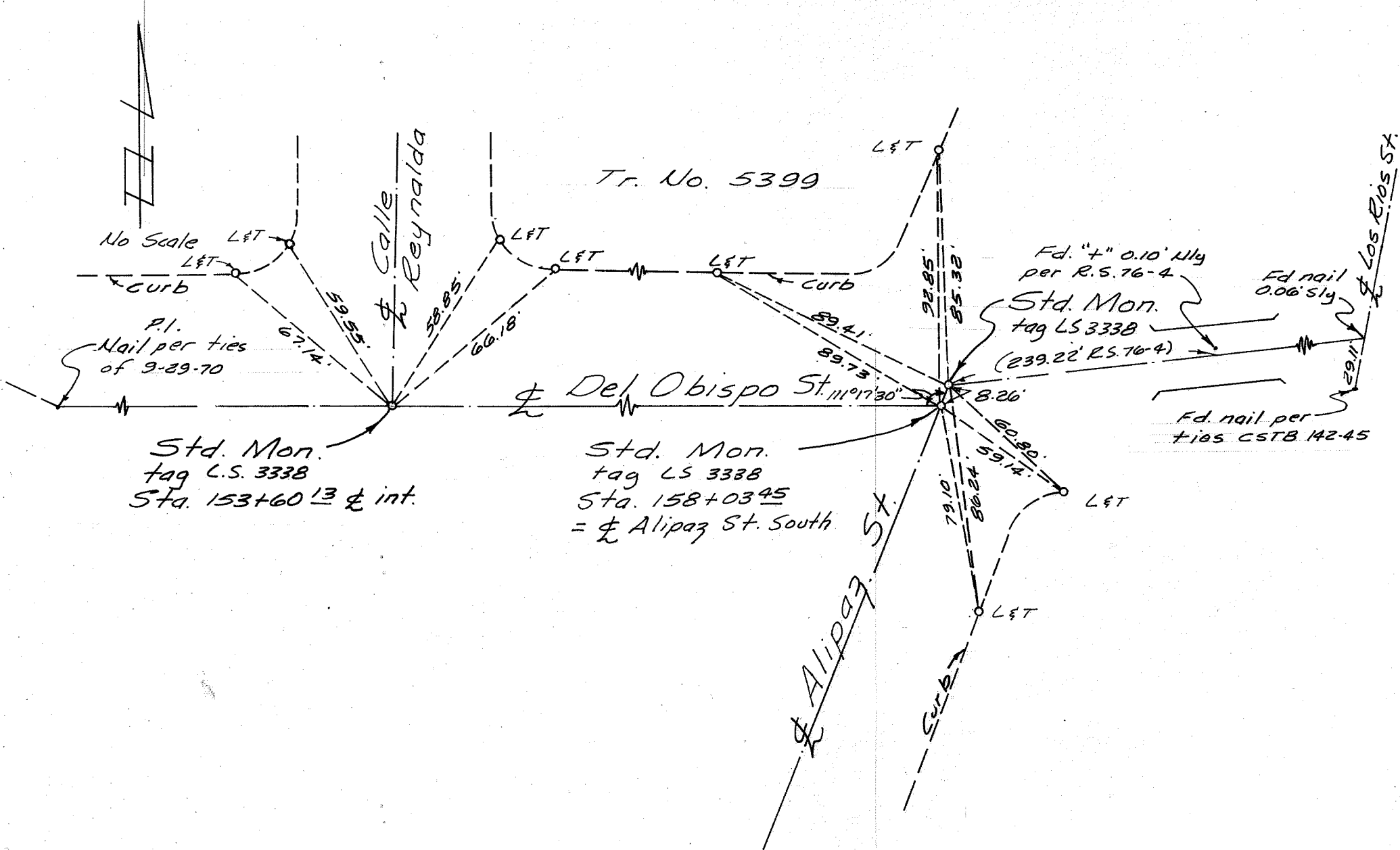


P.I. Set nail
 (Fd. 1/2" I.P. 10" deep
 per CSTB 142-30 9-29-70)

⌘ Data per imp plans AHFP No. 540
 R = 600.00'
 Δ = 21° 31' 10"
 L = 225.35'
 T = 114.02'

Monument Ties For Del Obispo Street, AHFP No. 540
 San Juan Capistrano, California

William E. Billings
 11-23-72 L.S. No. 3338



Monument Ties For Del Obispo Street, AHFP No. 540
 San Juan Capistrano, California