



WALDEN & ASSOCIATES, Inc.

4002 West Garry Avenue, Suite B

Santa Ana, California 92704

(714) 549-8649

CIVIL ENGINEERING  
LAND SURVEYING  
ENVIRONMENTAL PLANNING

DATE 5/23/84

W.O. NUMBER 79-327

RECEIVED  
REFERENCE San Juan Ranch

MAY 24 8 54 AM '84

CITY OF  
SAN JUAN  
CAPISTRANO

RANCHO VIEJO  
Rd

TO: City of San Juan Capistrano

32400 Paseo Adelanto

San Juan Capistrano, CA. 92675

ATTENTION: Engineering Dept.

GENTLEMEN: WE ARE SENDING YOU . . .

Attached

Under separate cover:

Blueprints  Plans  Calculations

VIA  Mail  UPS

Copy of Letter  Originals

Delivery  Other

Copies	Drawing Dated	Revision Dated	DESCRIPTION
15	2/22/84		Rancho Viejo Road Centerline Tie Sheets.

THESE ARE TRANSMITTED as checked below:

For Approval

Approved as Submitted

Resubmit  Copies for Approval

For Your Use

Approved as Noted

Submit  Copies for Distribution

As Requested

Returned for Corrections

Return  Approved Prints

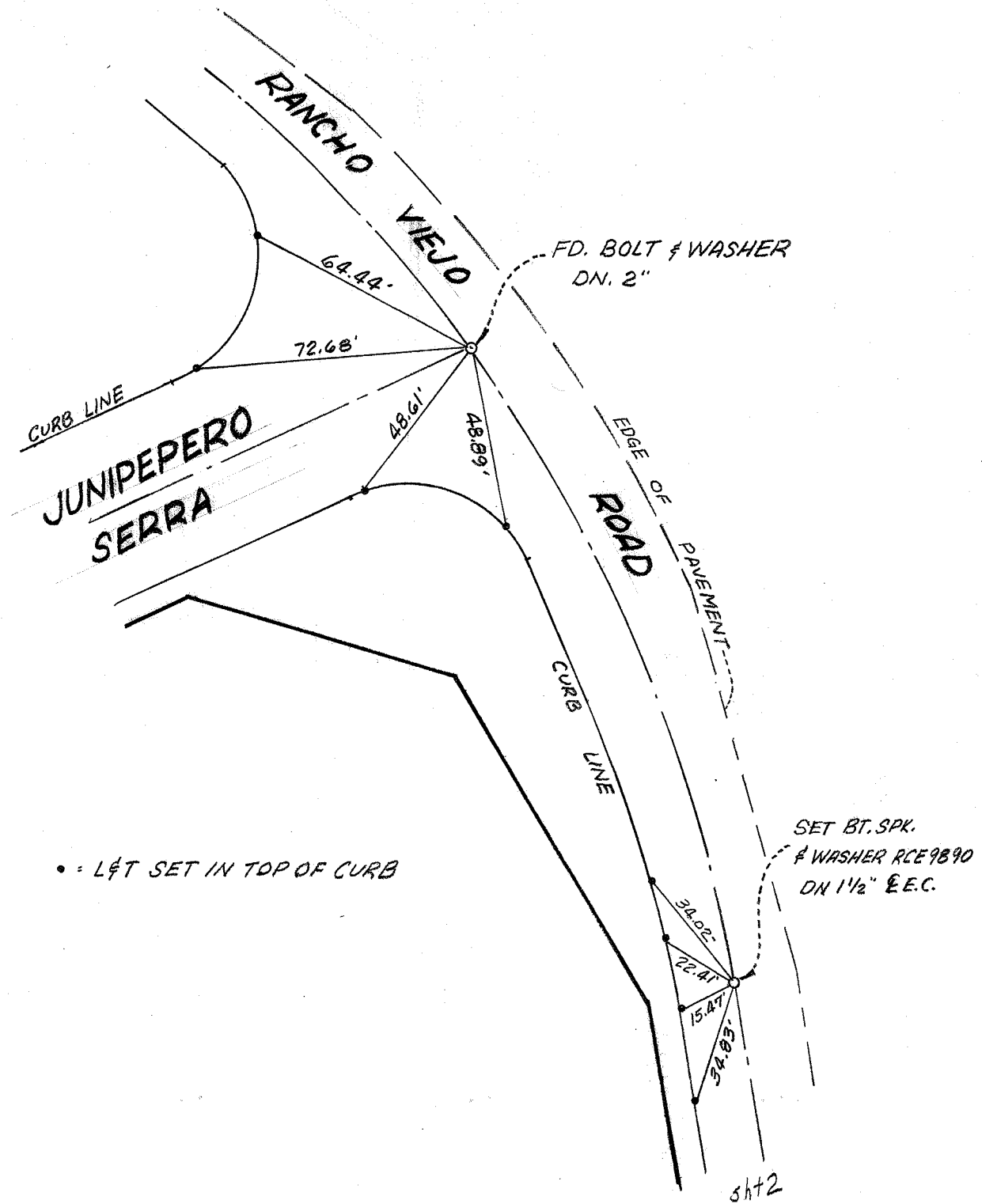
For Review and Comment

REMARKS:

Copy to:

WALDEN & ASSOCIATES, Inc.

BY: Paul Reichardt  
Paul Reichardt



CITY OF SAN JUAN CAPISTRANO

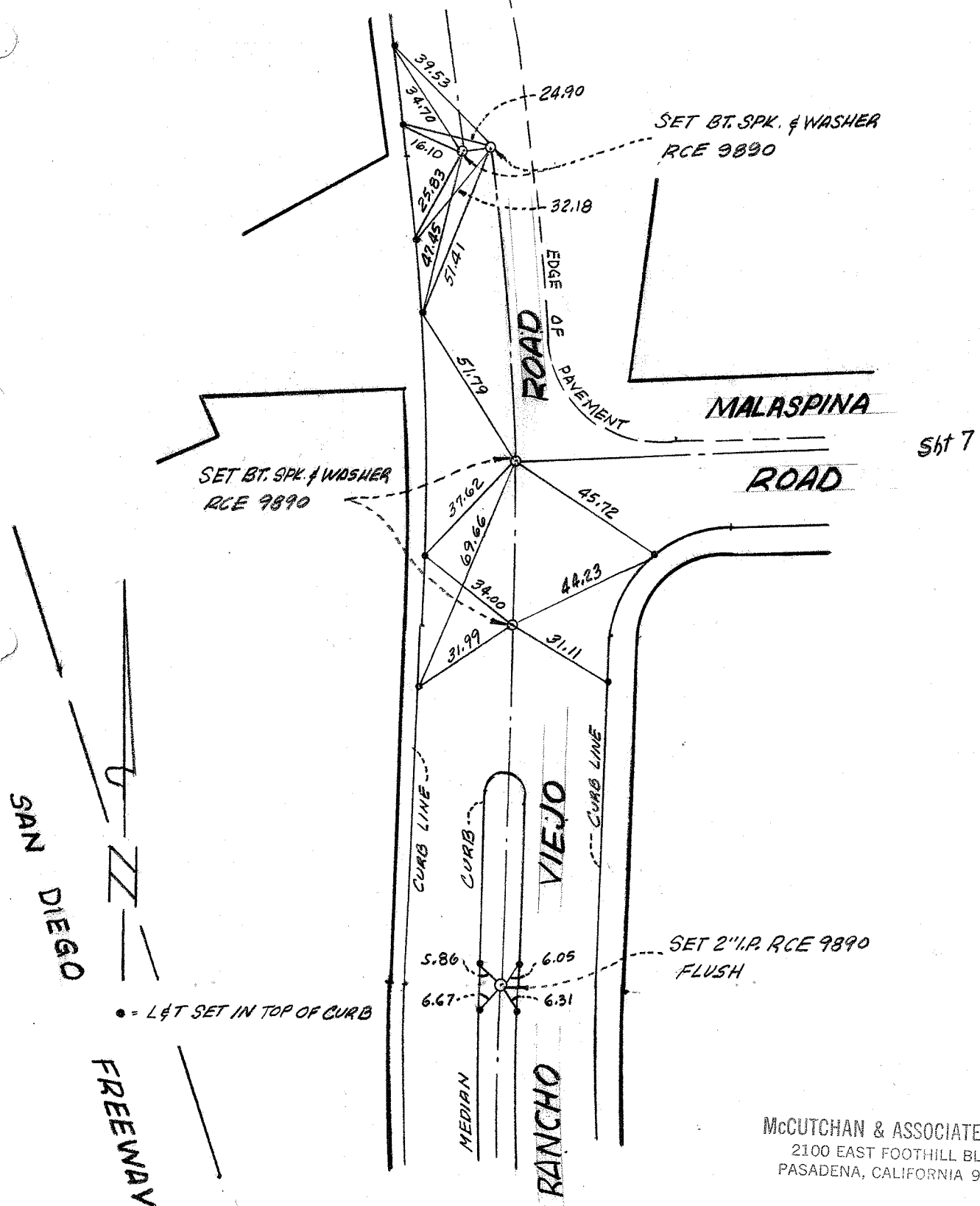
LUP 73-103

RANCHO VIEJO ROAD

FEB. 1974

SHT 1 OF 7

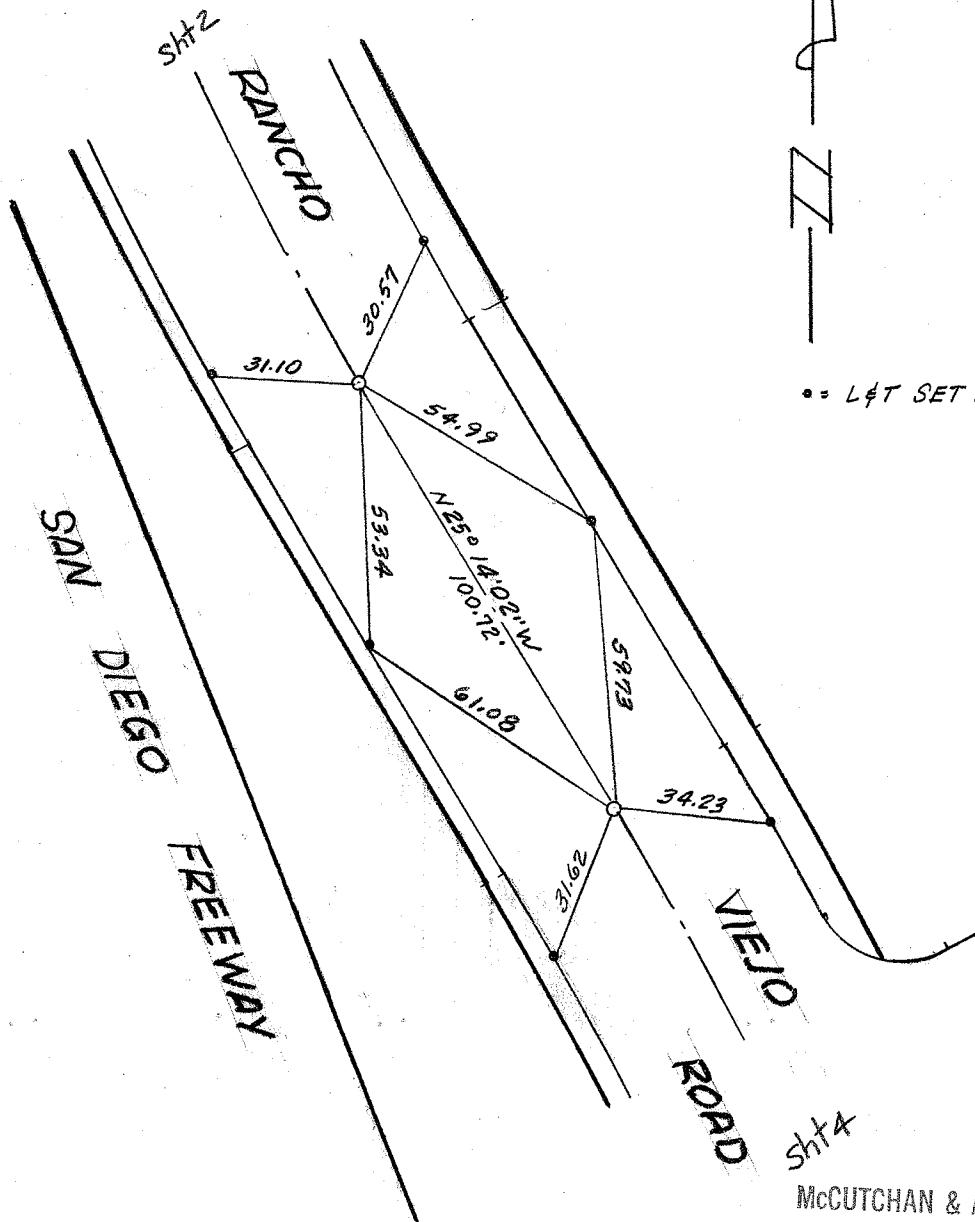
MCCUTCHAN & ASSOCIATES, INC.  
2100 EAST FOOTHILL BLVD.  
PASADENA, CALIFORNIA 91107



sht 3

McCUTCHAN & ASSOCIATES, INC.  
 2100 EAST FOOTHILL BLVD.  
 PASADENA, CALIFORNIA 91107

CITY OF SAN JUAN CAPISTRANO  
 LUP 73-103  
 RANCHO VIEJO ROAD  
 FEB. 1974  
 SHT 2 OF 7



•• L&T SET IN TOP OF CURB

McCUTCHAN & ASSOCIATES, INC.  
 2100 EAST FOOTHILL BLVD.  
 PASADENA, CALIFORNIA 91107

CITY OF SAN JUAN CAPISTRANO

LUP 73-103

RANCHO VIEJO ROAD

FEB. 1974

SHT 3 OF 7

SAN DIEGO

FREEWAY

RANCHO

VIEJO

ROAD

N 7°00'04"W  
100.37'

SET BT. SPK & WASHER  
RCE 9890

SET BT. SPK & WASHER  
RCE 9890

• = L&T SET IN TOP OF CURB

SET 2" I.P. RCE 9890  
FLUSH

McCUTCHAN & ASSOCIATES, INC.  
2100 EAST FOOTHILL BLVD.  
PASADENA, CALIFORNIA 91107

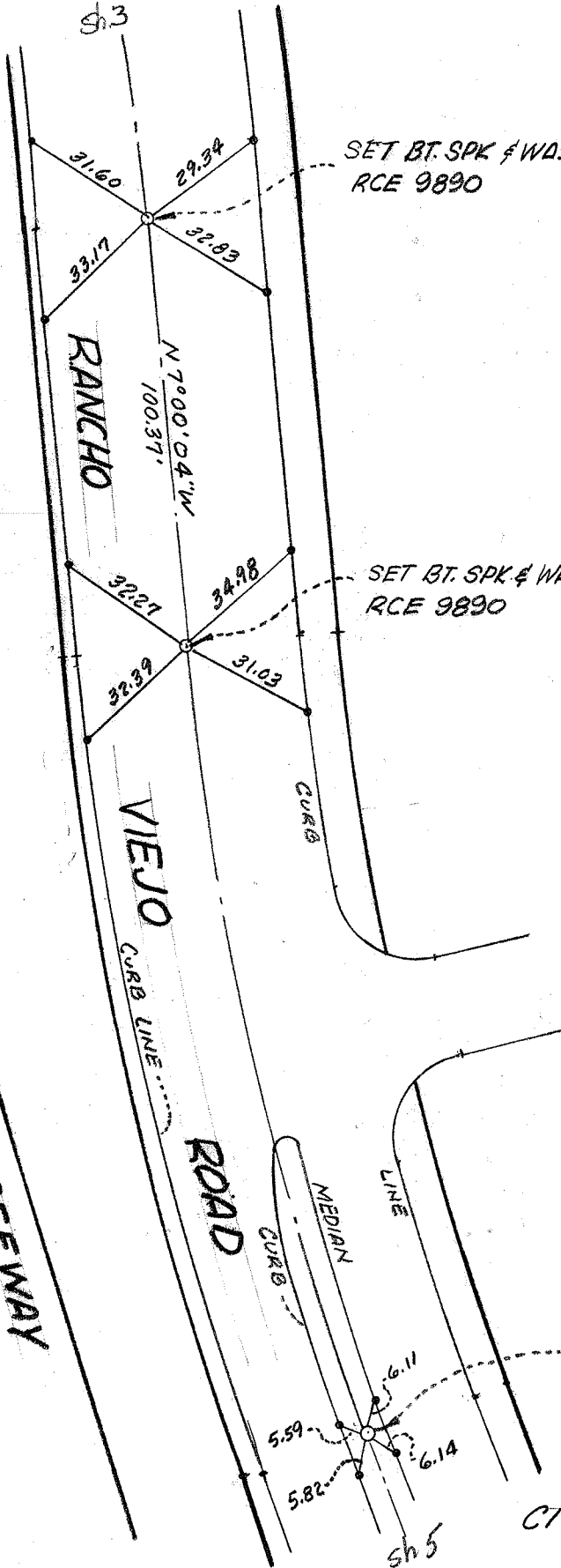
CITY OF SAN JUAN CAPISTRANO

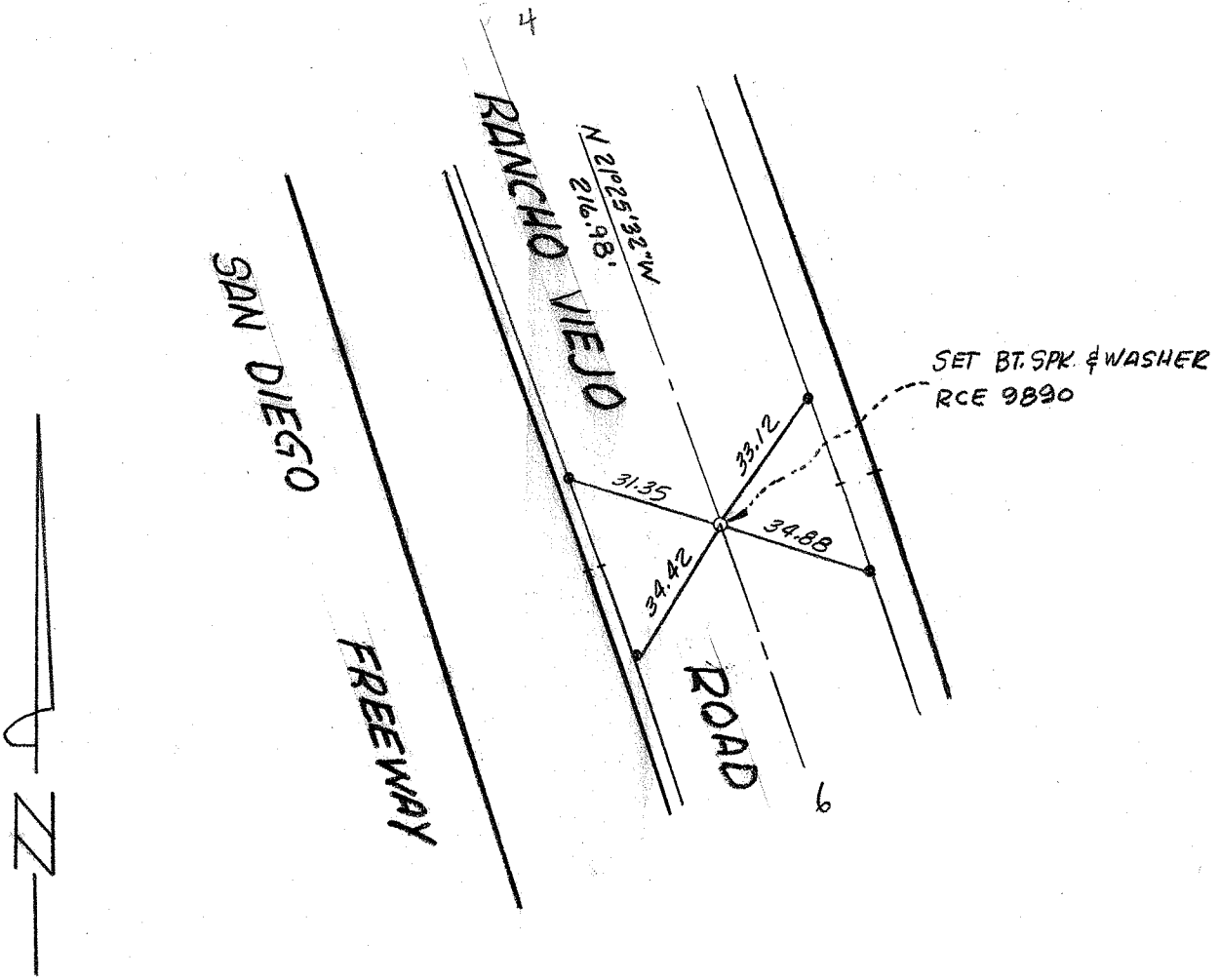
LUP 73-103

RANCHO VIEJO ROAD

FEB. 1974

SHT 4 OF 7

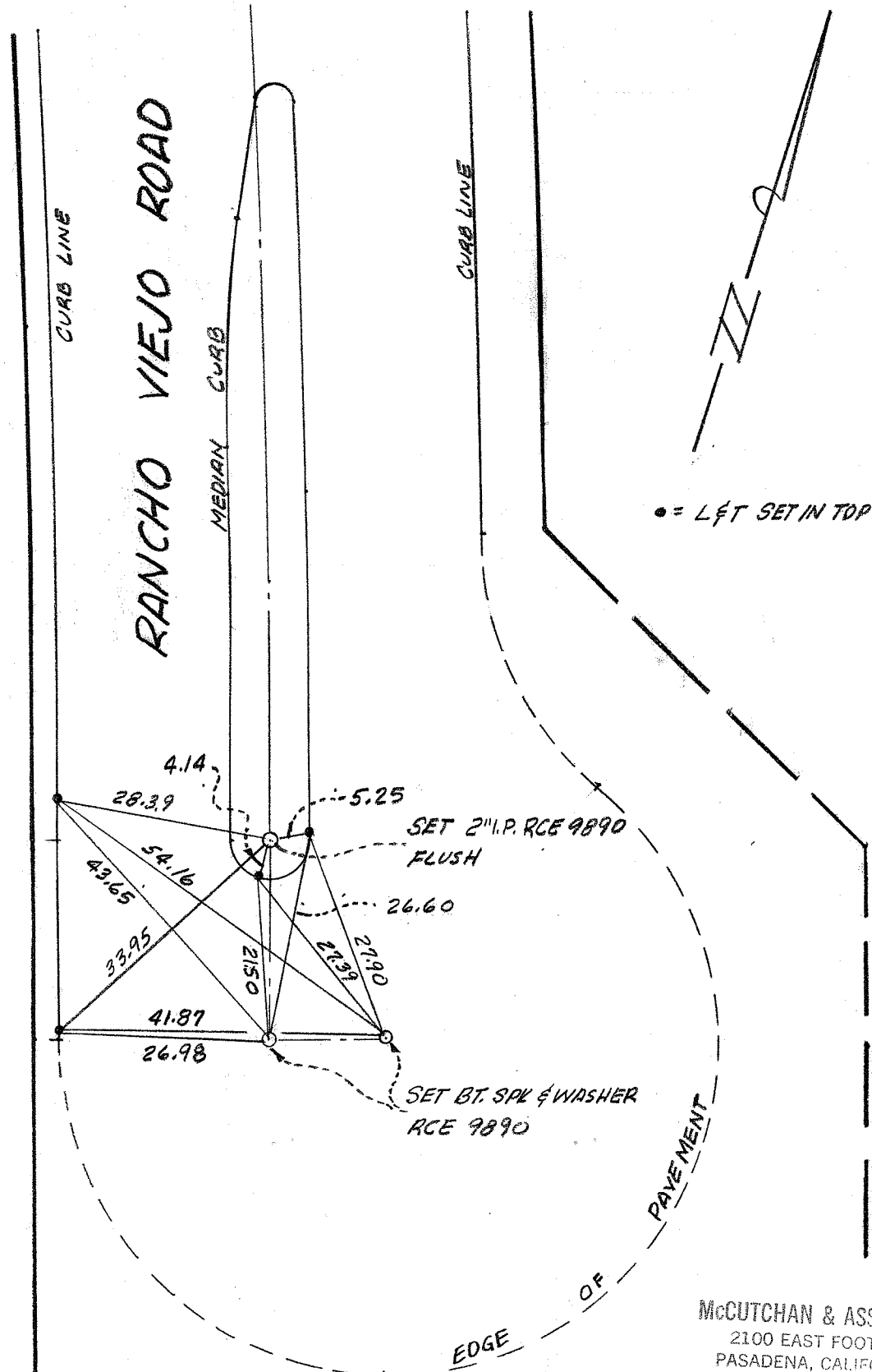




•• L&T SET IN TOP OF CURB

McCUTCHAN & ASSOCIATES, INC.  
2100 EAST FOOTHILL BLVD.  
PASADENA, CALIFORNIA 91107

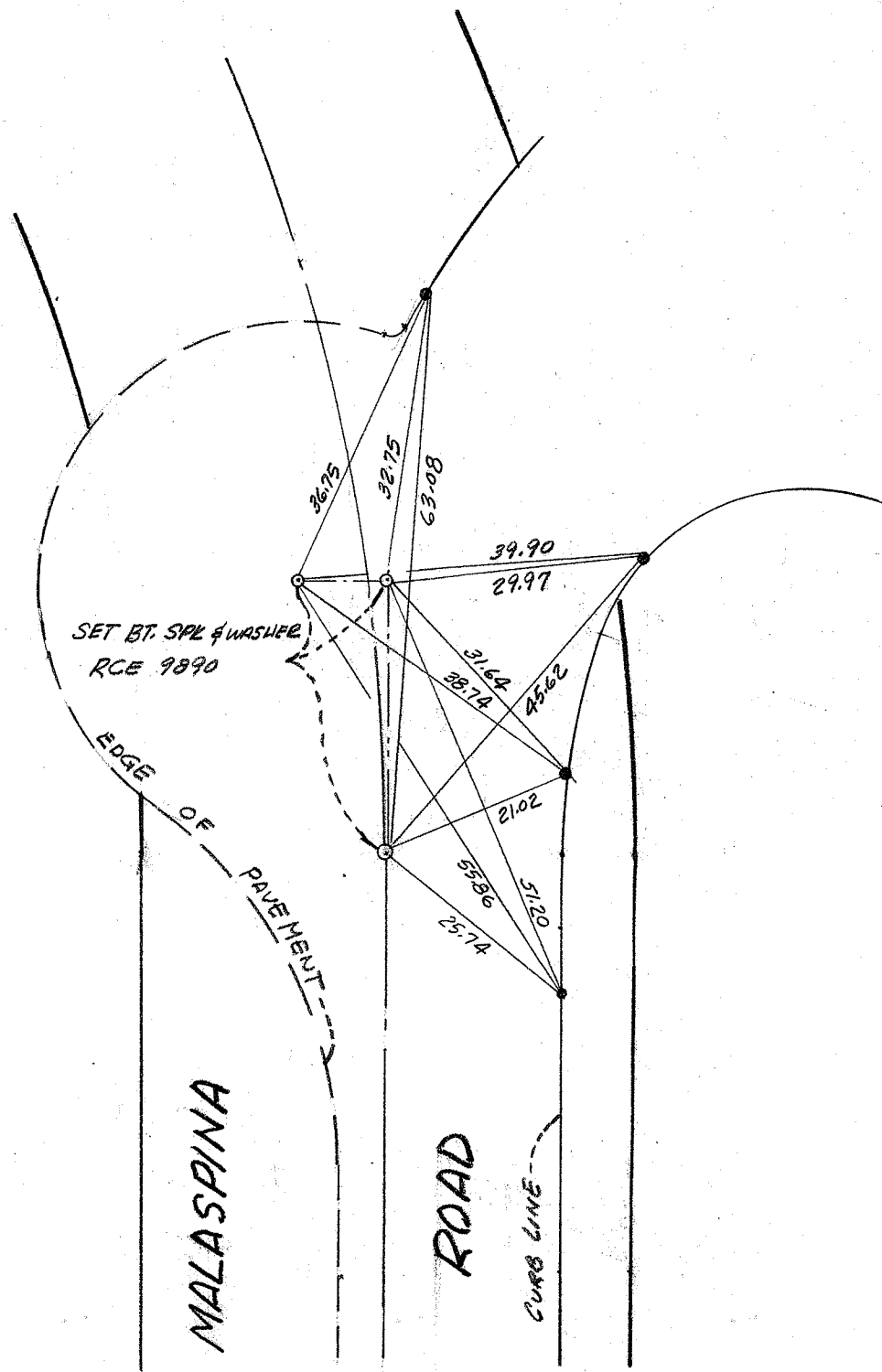
CITY OF SAN JUAN CAPISTRANO  
LUP 73-103  
RANCHO VIEJO ROAD  
FEB. 1974 SHT 5 OF 7



• = L&T SET IN TOP OF CURB

McCUTCHAN & ASSOCIATES, INC.  
 2100 EAST FOOTHILL BLVD.  
 PASADENA, CALIFORNIA 91107

CITY OF SAN JUAN CAPISTRANO  
 LUP 73-103  
 RANCHO VIEJO ROAD  
 FEB. 1974  
 SHT 6 OF 7



sht 2

• = LET SET IN TOP OF CURB

McCUTCHAN & ASSOCIATES, INC.  
 2100 EAST FOOTHILL BLVD.  
 PASADENA, CALIFORNIA 91107

CITY OF SAN JUAN CAPISTRANO  
 LUP 73-103  
 MALASPINA ROAD  
 FEB. 1974  
 SHT. 7 OF 7