

75

STEEPLECHASE DRIVE

131

132

ENTRADERO

ORTEGA

CALLE

HWY.

SEE SHEET 2

**LEGEND**

- — SET LEAD & TACK  
1/4" CONC. CURB
- — SET 1" IRON PIPE & TAG  
"RCE 10035"
- △ — SET 8" SPIKE & TAG  
"RCE 10035"

SOUTH COAST ENGINEERING SERVICES

*Eugene H. Ayer*  
EUGENE H. AYER, RCE 10035

TRACT NO. 6305  
CENTER-LINE TIE NOTES

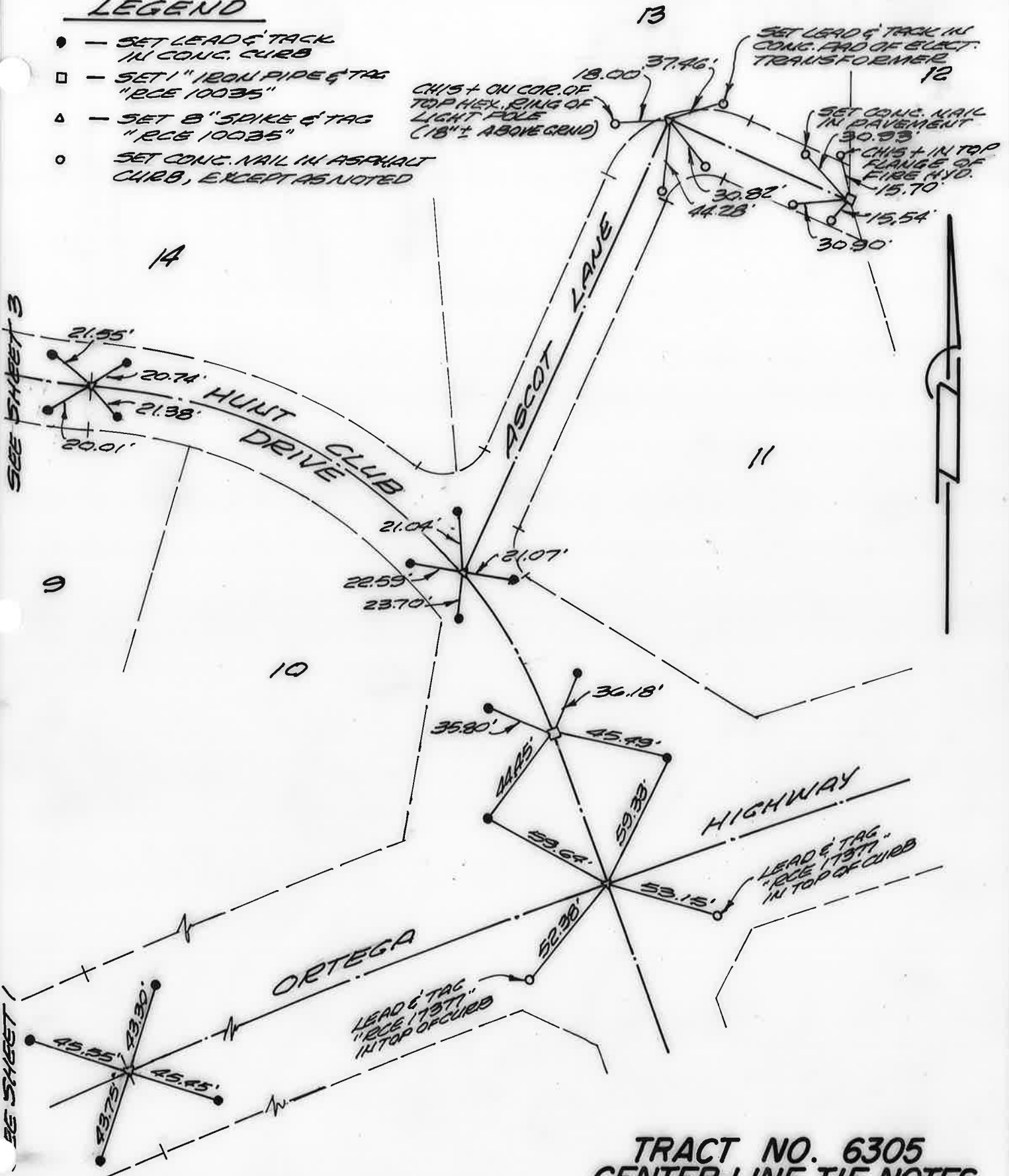
**LEGEND**

- - SET LEAD & TAG IN CONC. CURB
- - SET 1" IRON PIPE & TAG "RCE 10035"
- ▲ - SET 8" SPIKE & TAG "RCE 10035"
- - SET CONC. NAIL IN ASPHALT CURB, EXCEPT AS NOTED

CH/S + ON COR. OF TOP HEX. RING OF LIGHT POLE (18" ± ABOVE GROUND)

SET LEAD & TAG IN CONC. PAD OF ELECT. TRANSFORMER

SET CONC. NAIL IN PAVEMENT  
CH/S + IN TOP FLANGE OF FIRE HYD.

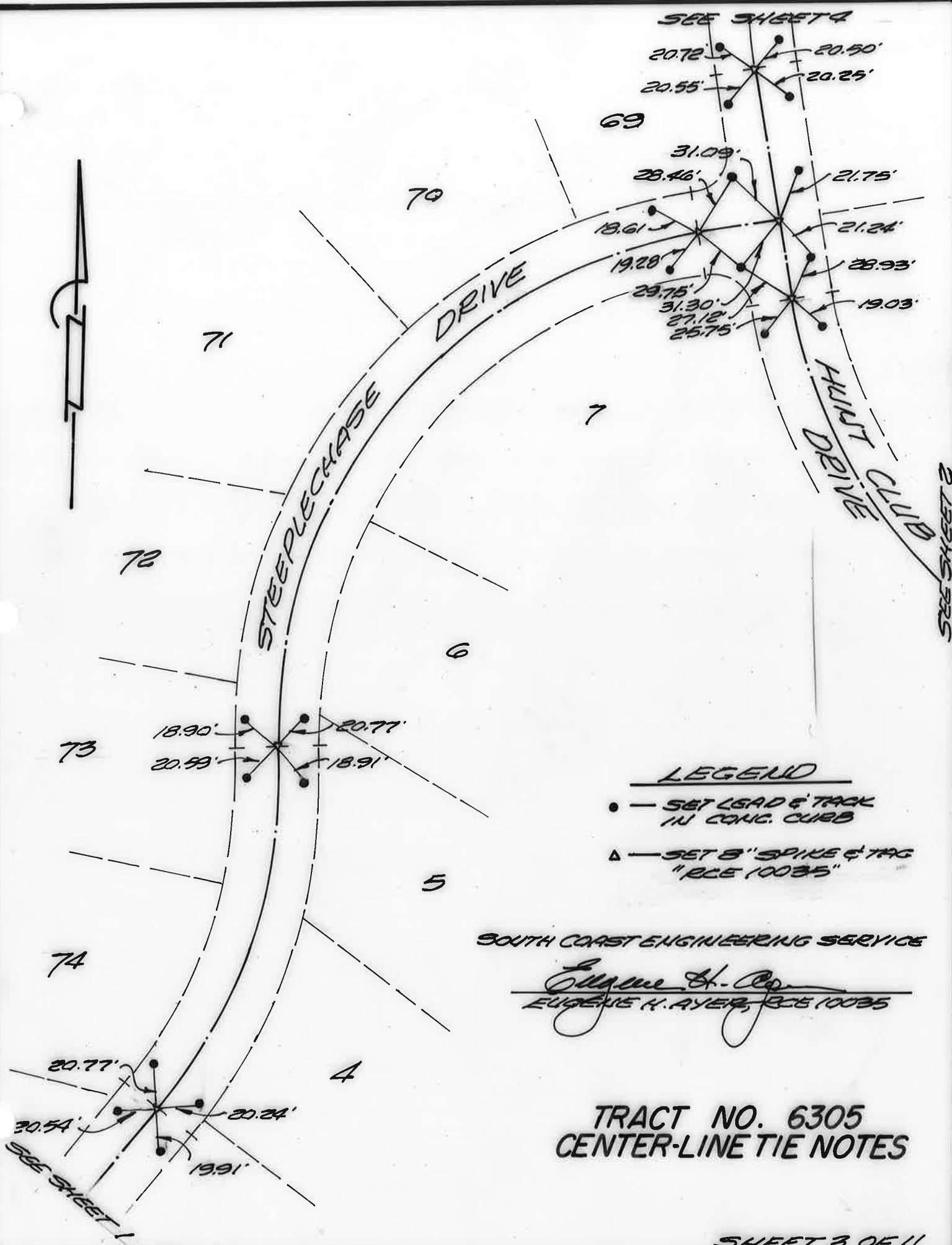


**TRACT NO. 6305  
CENTER-LINE TIE NOTES**

SOUTH COAST ENGINEERING SERVICE

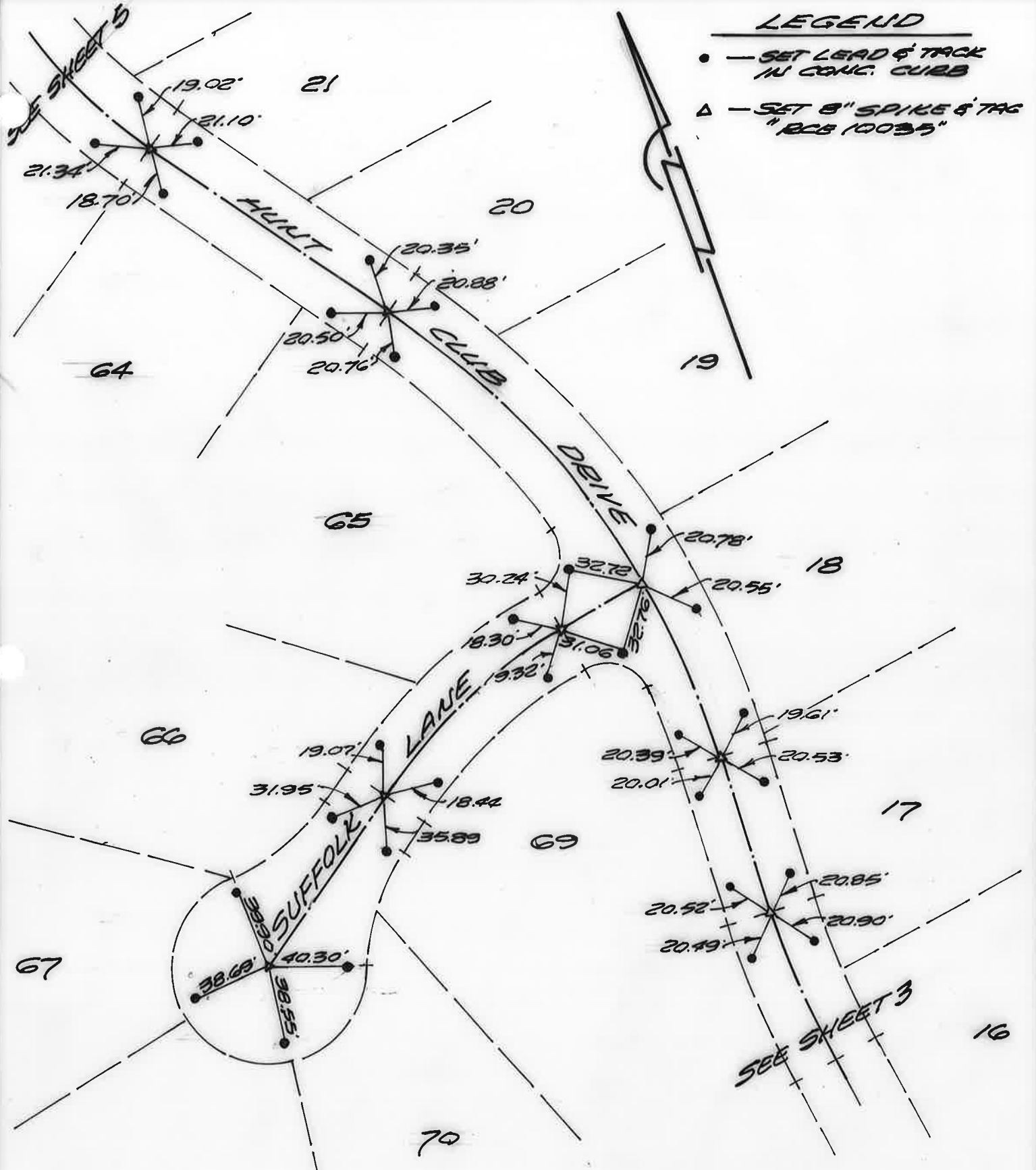
*Eugene H. Ayer*  
EUGENE H. AYER, RCE 10035

SHEET 2 OF 11



**LEGEND**

- — SET LEAD & TACK IN CONC. CURB
- △ — SET 8" SPIKE & TAG "RCB 10035"

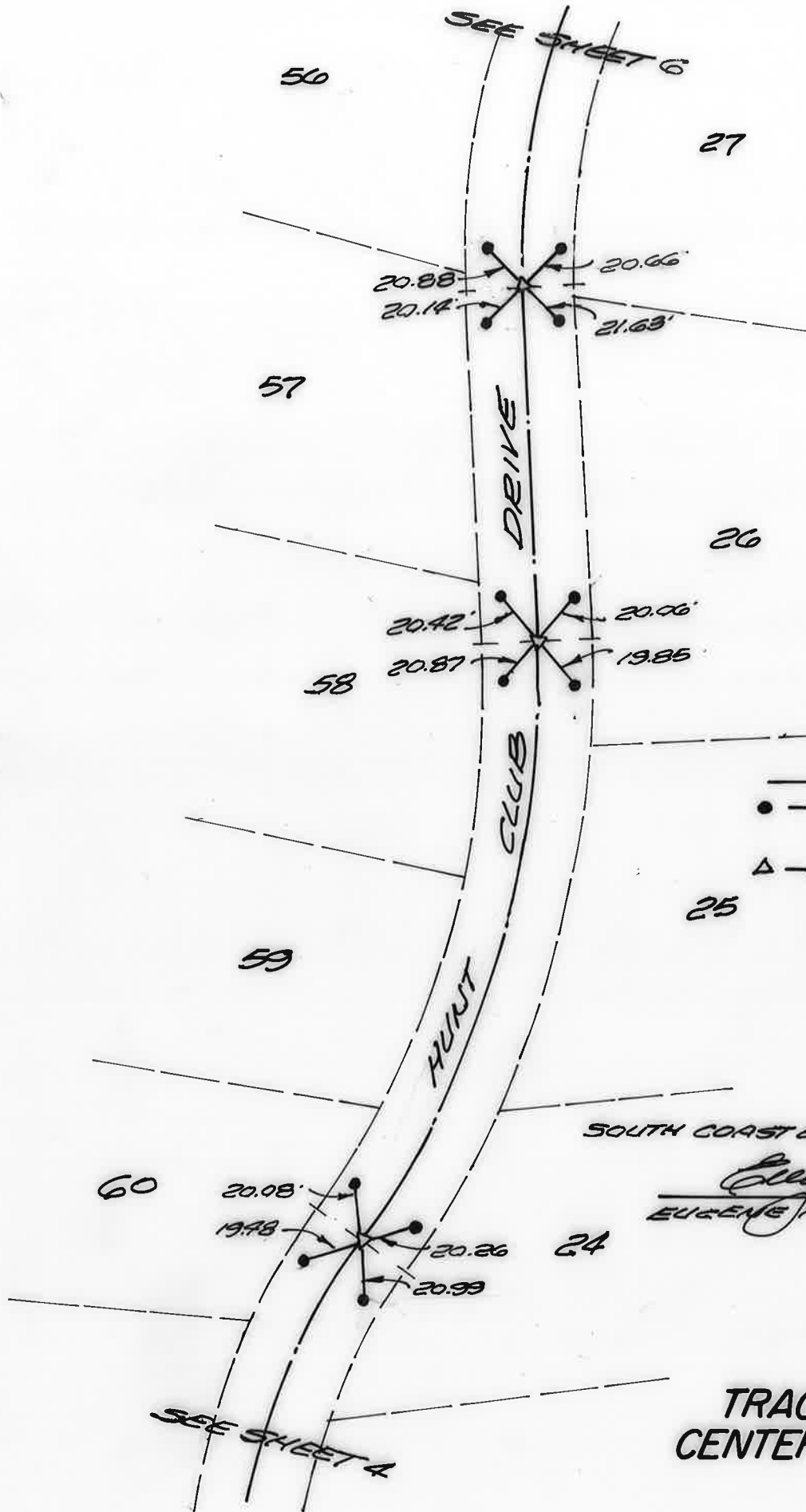


**TRACT NO. 6305  
CENTER-LINE TIE NOTES**

SOUTH COAST ENGINEERING SERVICE

*Eugene H. Ayer*  
EUGENE H. AYER, RCE 10035

SHEET 4 OF 11



**LEGEND**

- - SET LEAD & TACK IN CONC. CURB
- △ - SET 8" SPIKE & TAG "ECE 10035"

SOUTH COAST ENGINEERING SERVICE

*Eugene H. Ayer*  
 EUGENE H. AYER, ECE 10035

TRACT NO. 6305  
 CENTER-LINE TIE NOTES

SEE SHEET 5

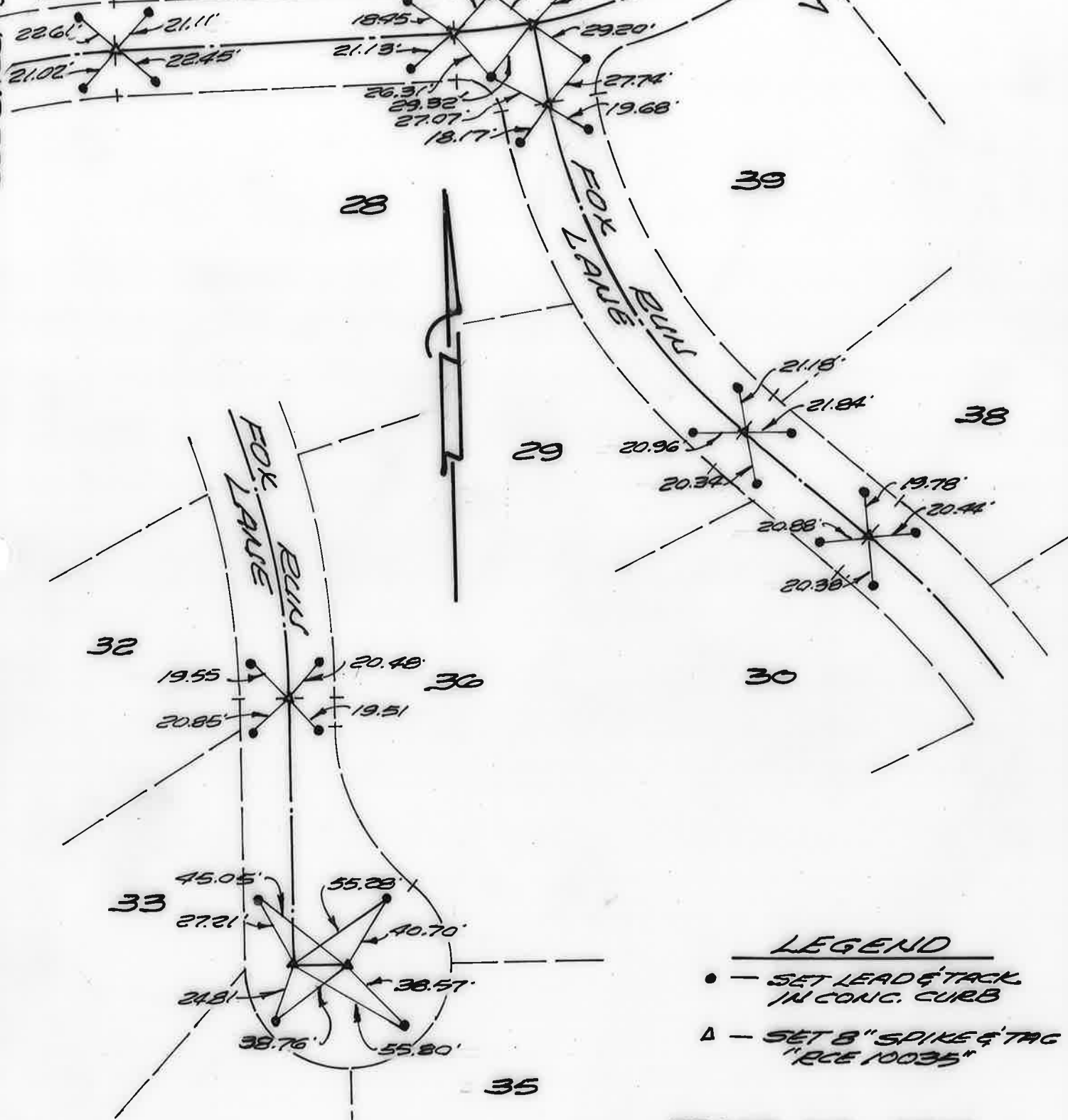
52

51

HUNT CLUB

DRIVE

SEE SHEET 7



LEGEND

- — SET LEAD & TACK IN CONC. CURB
- △ — SET 8" SPIKE & TAG "RCE 10035"

TRACT NO. 6305  
CENTER-LINE TIE NOTES

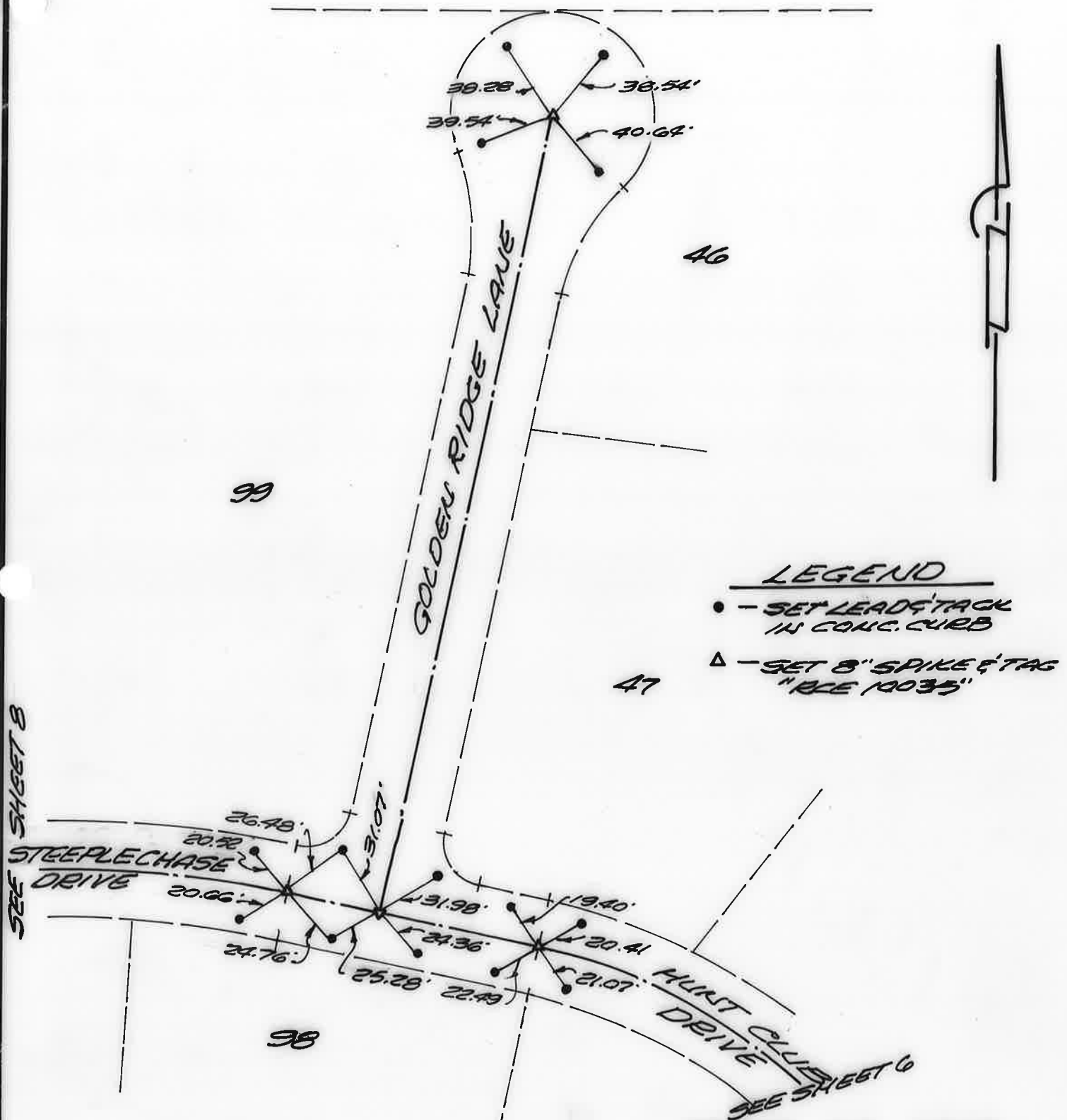
34  
SOUTH COAST ENGINEERING SERVICE

*Eugene H. Ayse*

EUGENE H. AYSE, RCE 10035

SHEET 6 OF 11

SEE SHEET 8  
3226



99

46

47

98

LEGEND

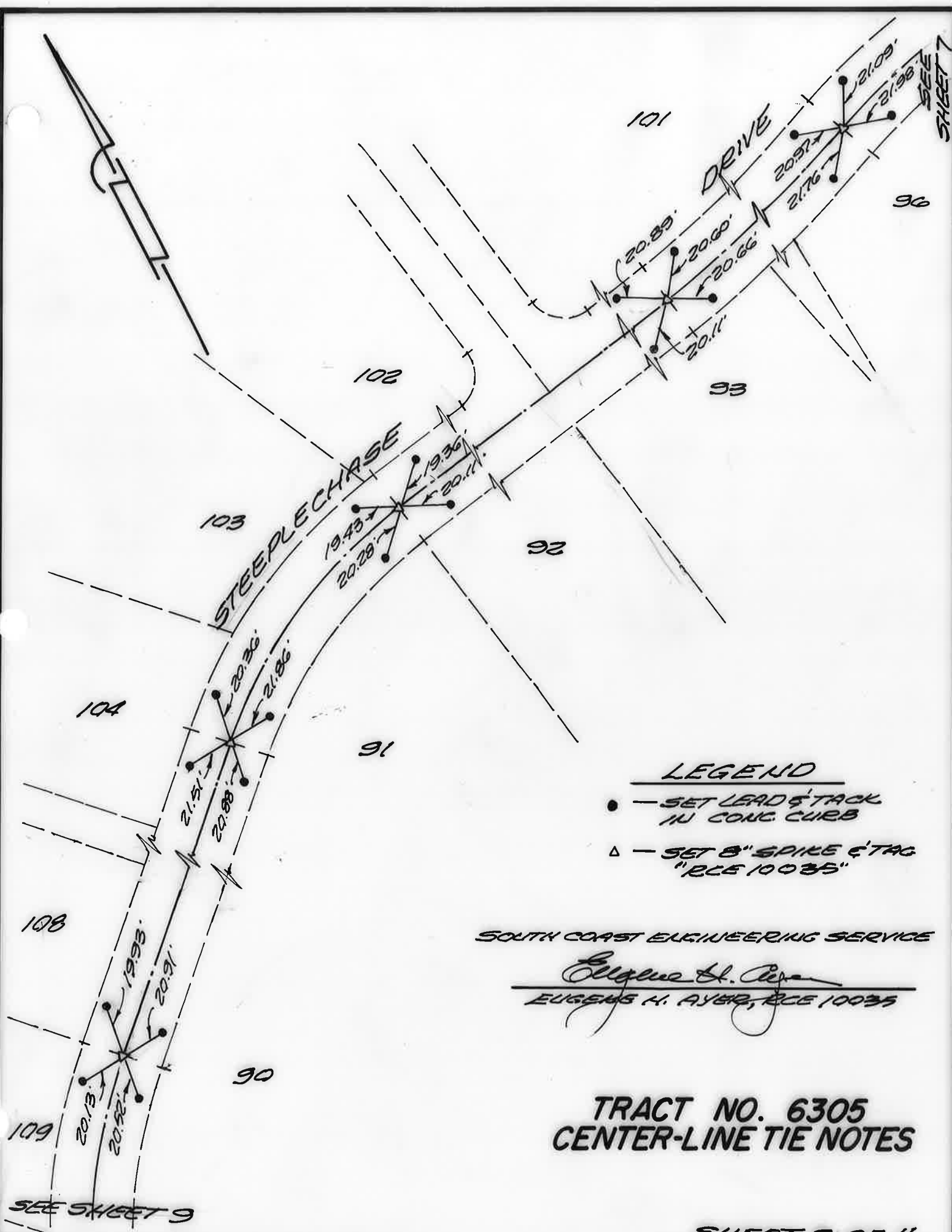
- - SET LEADSTACK IN CONC. CURB
- △ - SET 8" SPIKE & TAG "RLE 10035"

SOUTH COAST ENGINEERING SERVICE

*Eugene H. Ayer*  
 EUGENE H. AYER, RLE 10035

TRACT NO. 6305  
CENTER-LINE TIE NOTES





**LEGEND**

- — SET LEAD & TACK IN CONC CURB
- △ — SET 8" SPIKE & TAG "RCE 10035"

SOUTH COAST ENGINEERING SERVICE

*Eugene H. Ayers*  
 EUGENE H. AYERS, RCE 10035

**TRACT NO. 6305  
 CENTER-LINE TIE NOTES**

SEE SHEET 9

SHEET 8 OF 11

SEE SHEET 7



ROLLING WOOD LAKE

SEE SHEET 10  
26.84  
21.03  
20.06  
26.71



LEGEND

- - SET LEAD & TACK IN CONC. CURB
- △ - SET 8" SPIKE & TAG "RCE 10035"

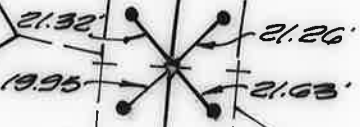
SOUTH COAST ENGINEERING SERVICE

*Eugene H. Ayer*  
EUGENE H. AYER, RCE 10035

112

DRIVE

90



LOT "A"

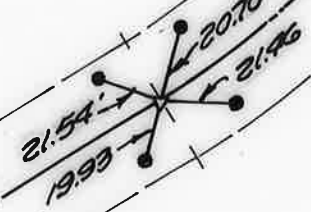
89

116

STEEPLECHASE

88

117



87

TRACT NO. 6305  
CENTER-LINE TIE NOTES



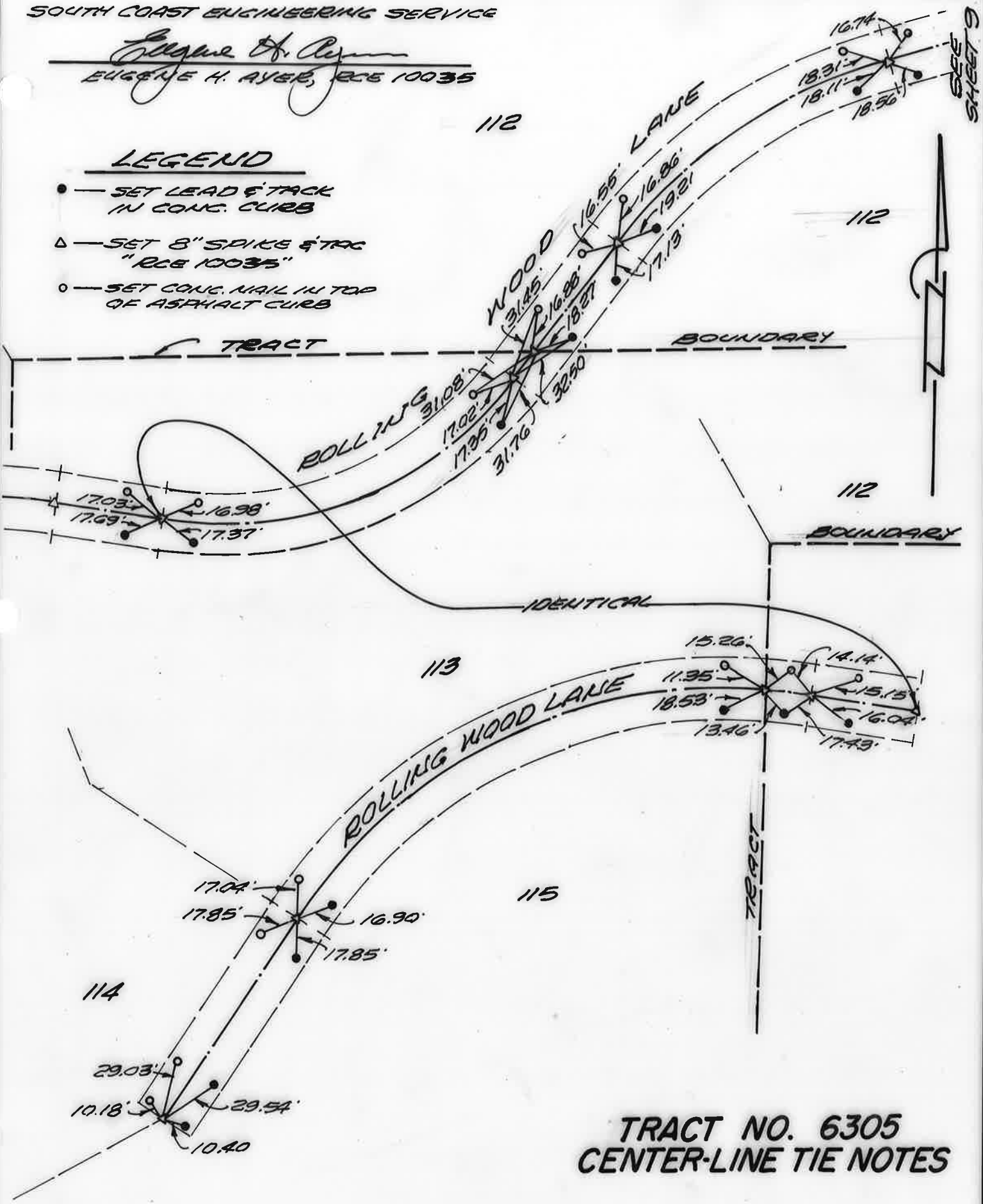
86

SEE SHEET 11

*Eugene H. Ayer*  
EUGENE H. AYER, RCE 10035

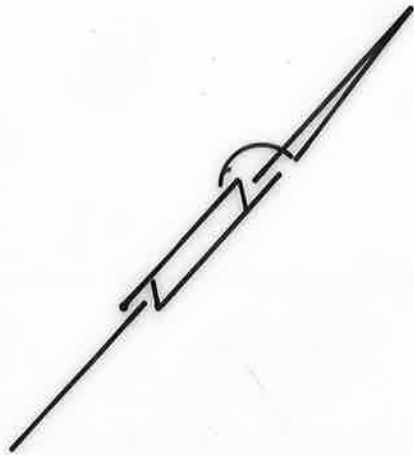
**LEGEND**

- — SET LEAD & TACK IN CONC. CURB
- ▲ — SET 8" SPIKE & TAG "RCE 10035"
- — SET CONC. NAIL IN TOP OF ASPHALT CURB



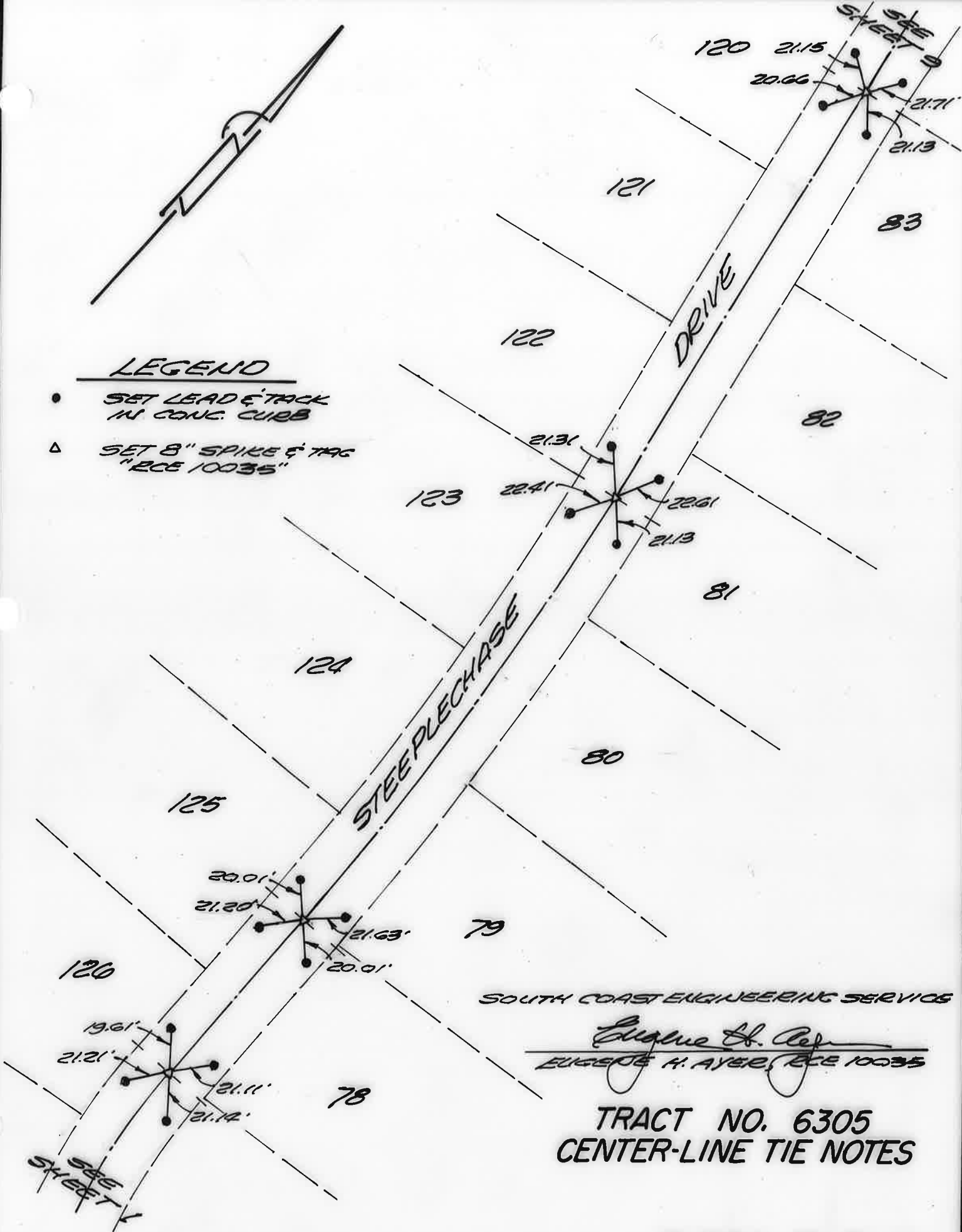
**TRACT NO. 6305  
CENTER-LINE TIE NOTES**

SEE SHEET 9



**LEGEND**

- SET LEAD & TACK IN CONC. CURB
- △ SET 8" SPIKE & TAG "ECE 10035"



SOUTH COAST ENGINEERING SERVICES

*Eugene H. Ayer*  
EUGENE H. AYER, ECE 10035

TRACT NO. 6305  
CENTER-LINE TIE NOTES